



SkyIPCam 250 Network Camera

Model # AIC250

Quick Installation Guide

Section 1

This Quick Installation Guide only provides the basic instructions. For more detailed information, please refer to the User's Manual in the supplied CD.

Getting Started

Note: Before using the IP Camera, you'll need to perform the following tasks:

1. Connect the IP Camera to your network.
2. Install the Setup Wizard.
3. Gather information about your local network address.
4. Configure the IP Camera using the Setup Wizard.

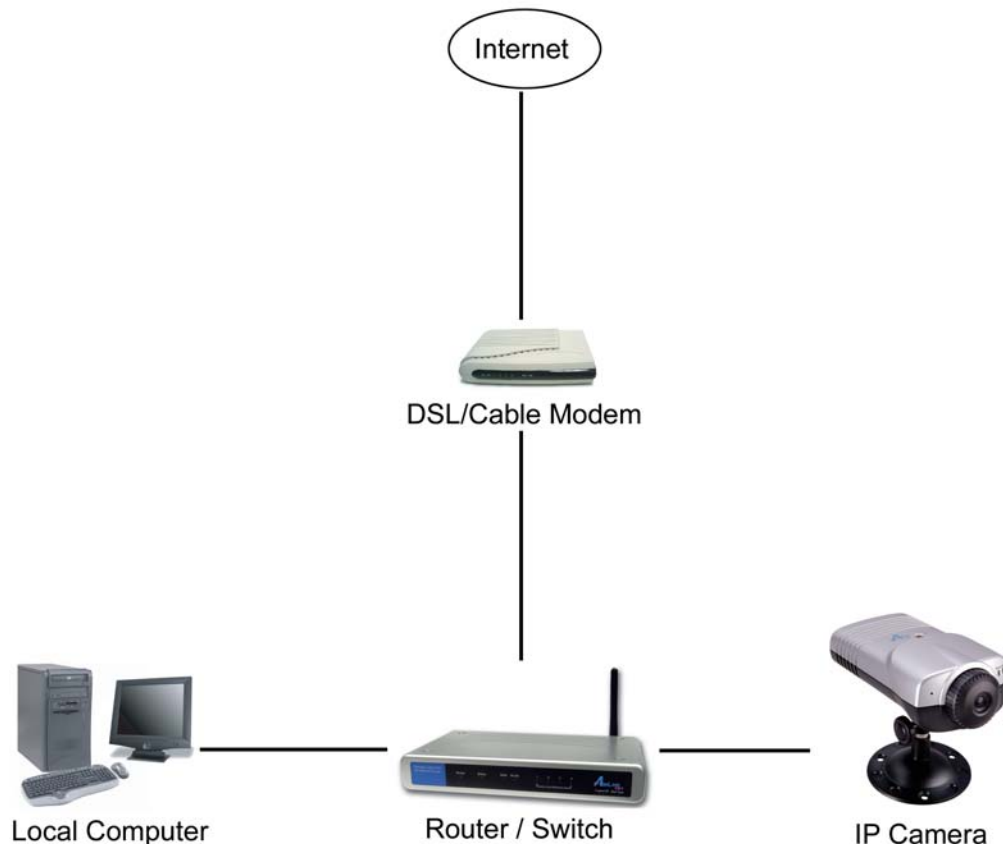
Please follow the steps in this Guide carefully to ensure proper setup of the IP Camera.

Caution: The IP Camera is designed for indoor use only. Direct exposure to sunlight may cause permanent damage to the CMOS sensor. When operating in extremely bright environment, an iris lens or sun visor is recommended to protect the IP Camera.

Step 1 Connect one end of a network cable to the IP Camera and connect the other end to one of the **LAN** ports of the router or switch (See the diagram below).

Step 2 Power on the IP Camera by connecting one end of the supplied power adapter to the power jack of the Camera and connecting the other end to an electrical outlet.

Step 3 Verify that all the lights on the Camera are lit. If not, verify that all the connections are secure and try again.

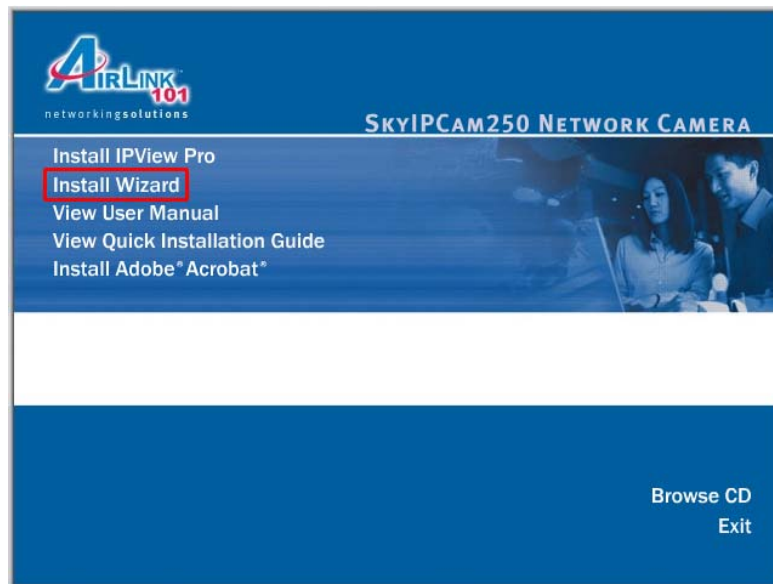


Section 2

Installing the Setup Wizard

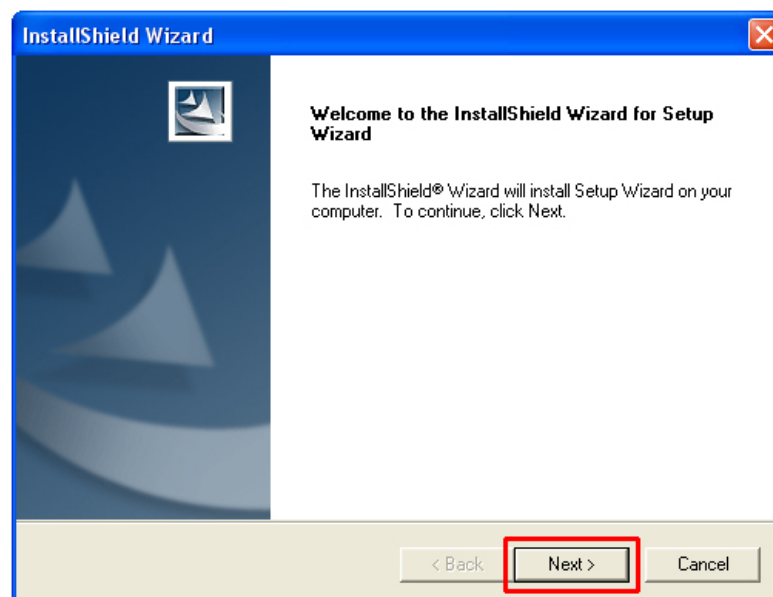
Step 1 Insert the provided CD and wait for the autorun screen to appear.

Step 2 Click on **Install Wizard**.

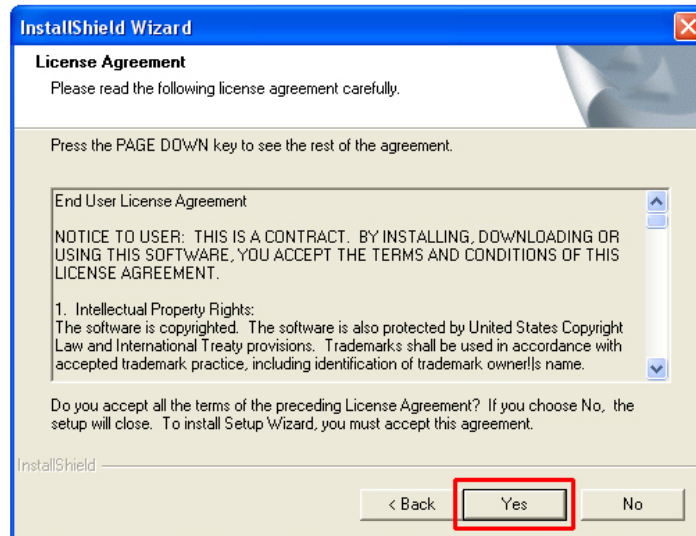


Note: If the autorun screen does not appear automatically, go to **Start, Run**, type **D:\autorun.exe** (where **D** is the letter of your CD drive) and click **OK**.

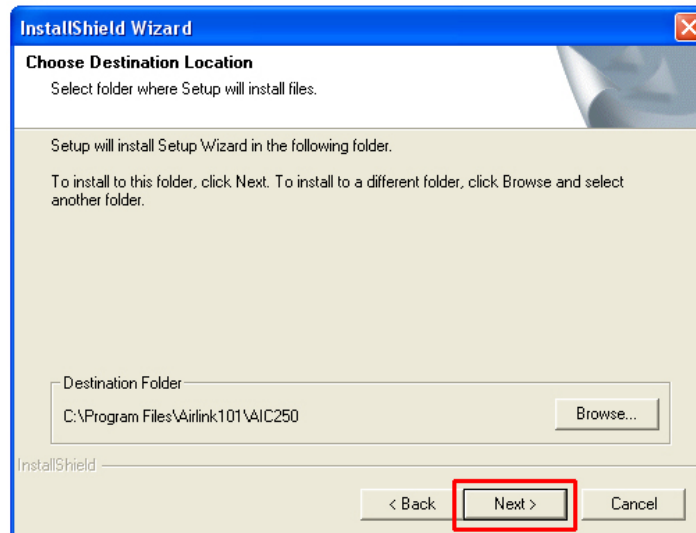
Step 3 Click **Next**.



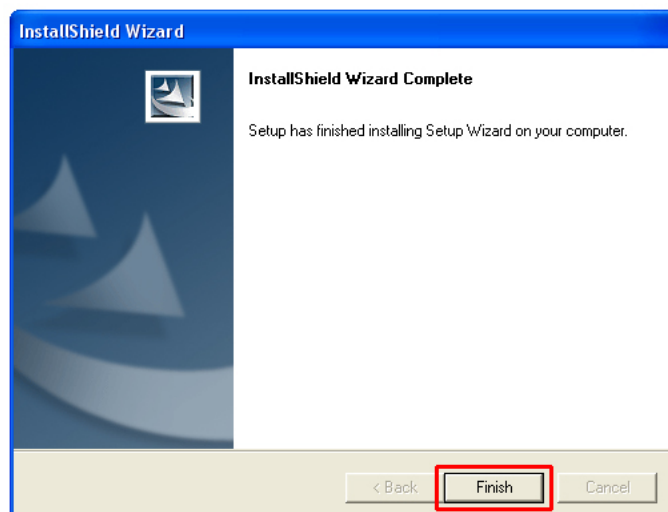
Step 4 Click **Yes** to accept the License Agreement.



Step 5 Click **Next** to accept the default Destination Folder.



Step 6 Click **Finish** to complete the installation.

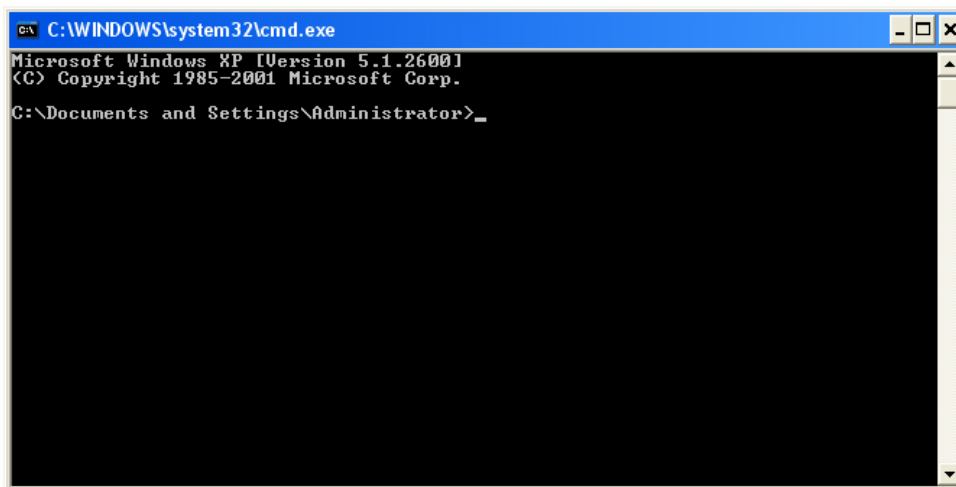


Section 3

Gathering Information

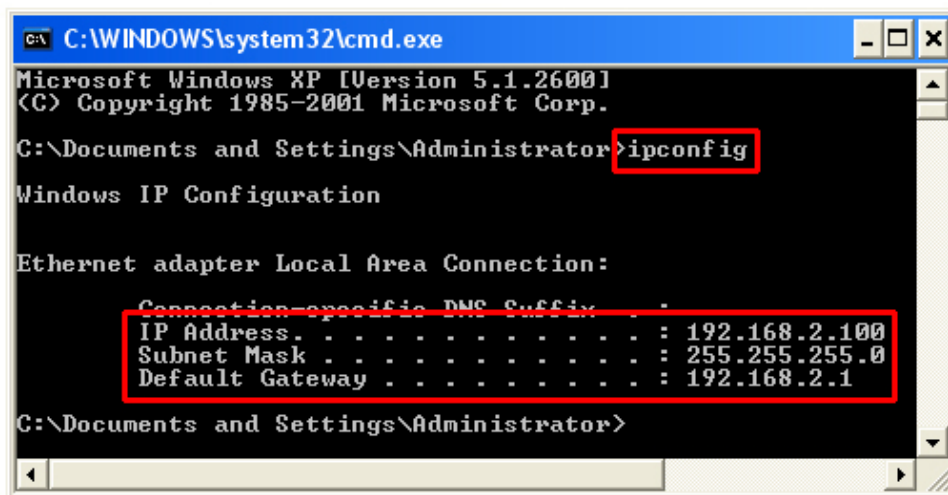
Note: Before using the Setup Wizard, you'll need to take note of your local network address.

Step 1 Click on **Start, Run**, and type **command** (for Windows 95/98/ME) or **cmd** (for Windows 2000/XP) and click **OK**. The command prompt will appear.



```
C:\WINDOWS\system32\cmd.exe
Microsoft Windows XP [Version 5.1.2600]
(C) Copyright 1985-2001 Microsoft Corp.
C:\Documents and Settings\Administrator>
```

Step 2 At the command prompt, type **ipconfig** and press **Enter**.



```
C:\WINDOWS\system32\cmd.exe
Microsoft Windows XP [Version 5.1.2600]
(C) Copyright 1985-2001 Microsoft Corp.
C:\Documents and Settings\Administrator>ipconfig
Windows IP Configuration

Ethernet adapter Local Area Connection:

    Connection-specific DNS Suffix . . . . . : 
    IP Address . . . . . : 192.168.2.100
    Subnet Mask . . . . . : 255.255.255.0
    Default Gateway . . . . . : 192.168.2.1

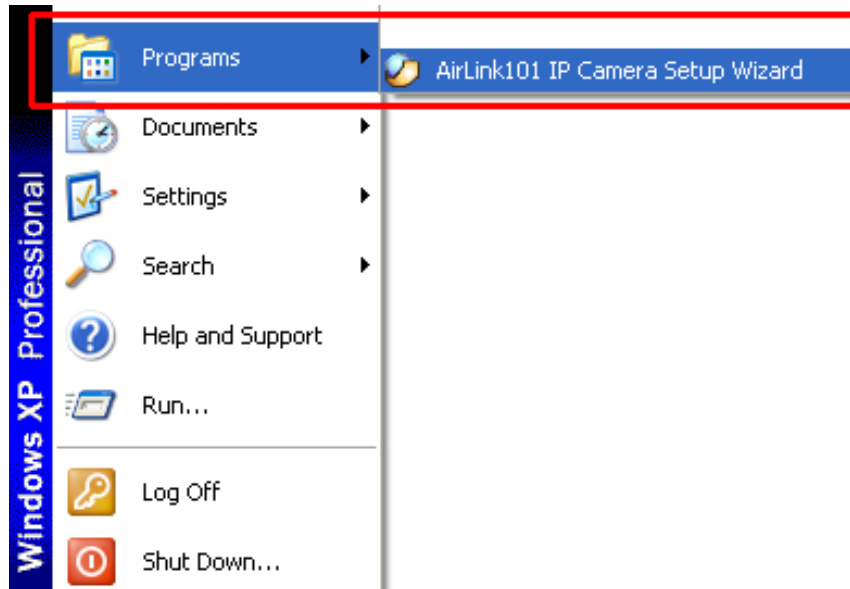
C:\Documents and Settings\Administrator>
```

Step 3 Write down the information for the **IP Address**, **Subnet Mask**, and **Default Gateway**. You will need these information later.

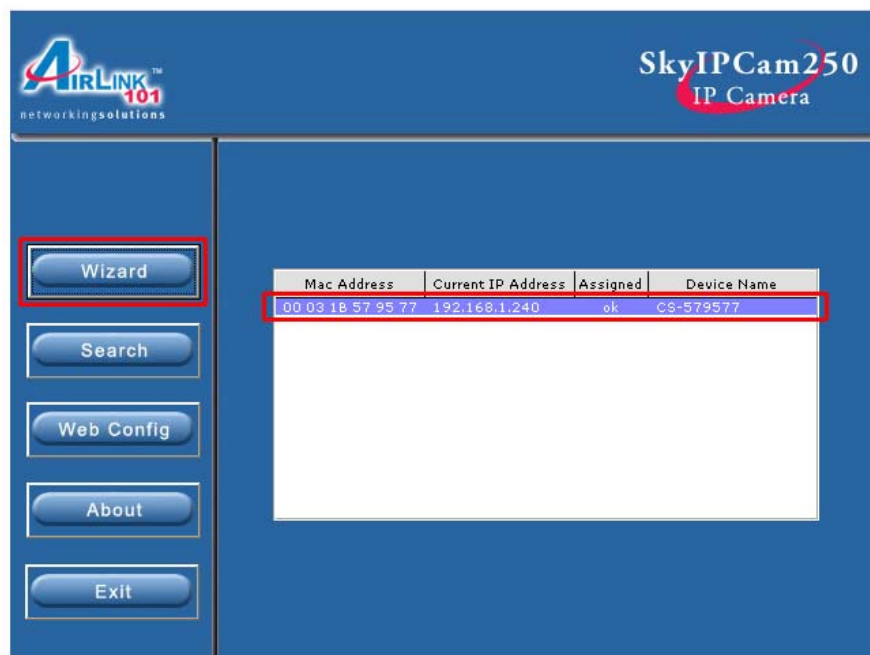
Section 4

Using the Setup Wizard

Step 1 Go to **Start > (All) Programs > AirLink101 IP Camera Setup Wizard**.



Step 2 Select the IP Camera you want to configure from the list and click on the **Wizard** button.



Step 3 If the Camera's default IP Address is on a different subnet, the following message will appear. Click **Yes** to continue.



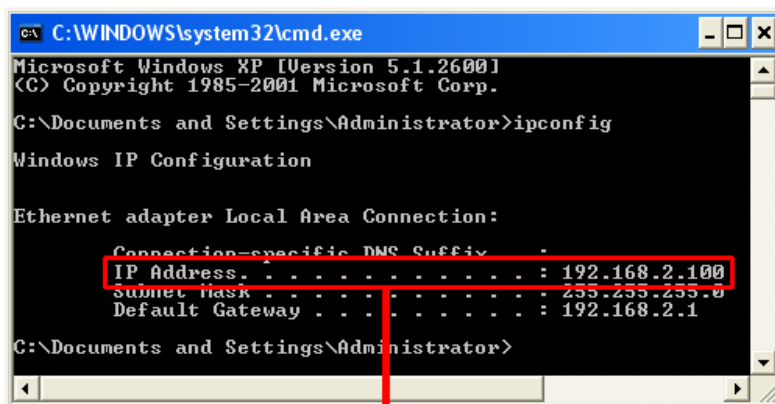
Note: If you do not receive this message, skip to **Step 9**.

Step 4 Enter **admin** for both the Admin ID and Password and click **OK**.



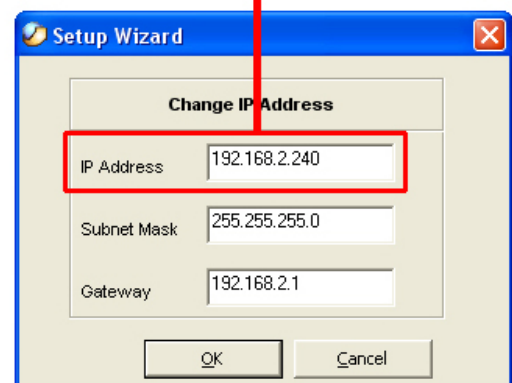
Step 5 In the **IP Address** field, change the first three numbers to match your local network address.

For example: If your computer's **IP Address** is **192.168.2.100**, change the first three numbers to **192.168.2** as well but leave the last number **240** alone.

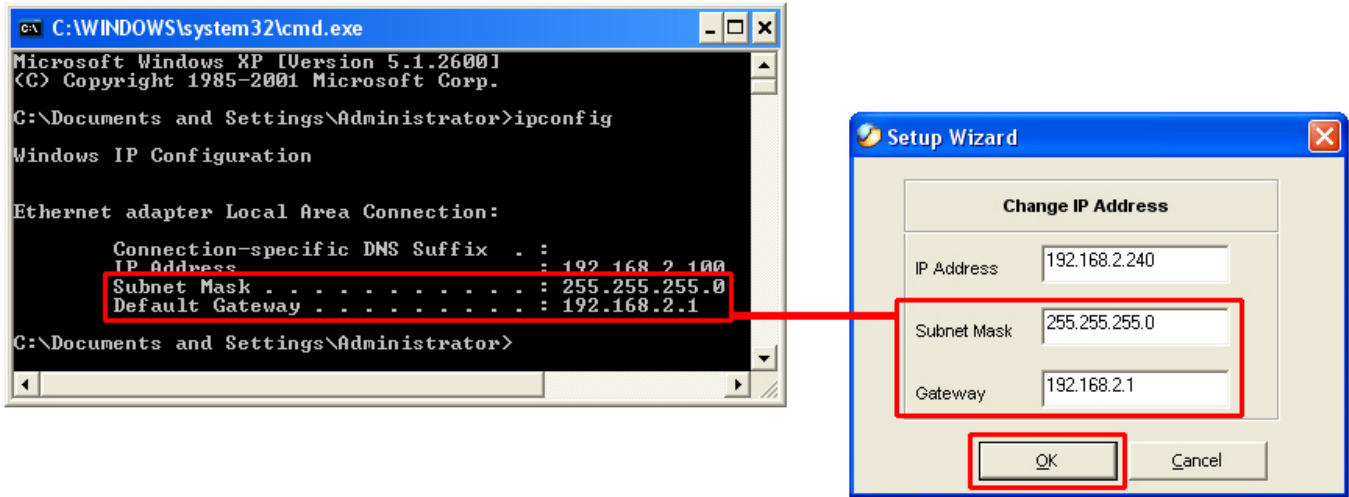


IP Address of your computer

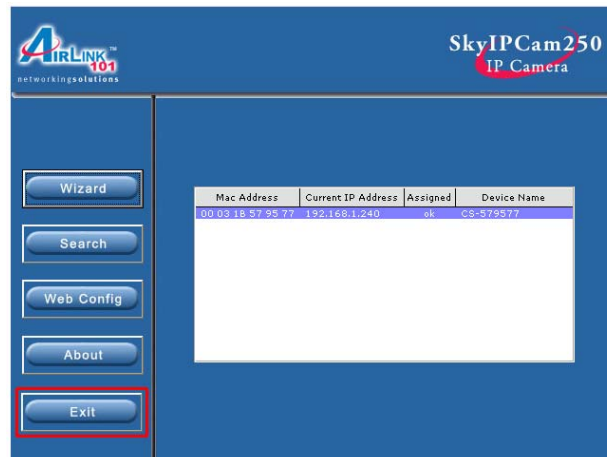
IP Address of the Camera



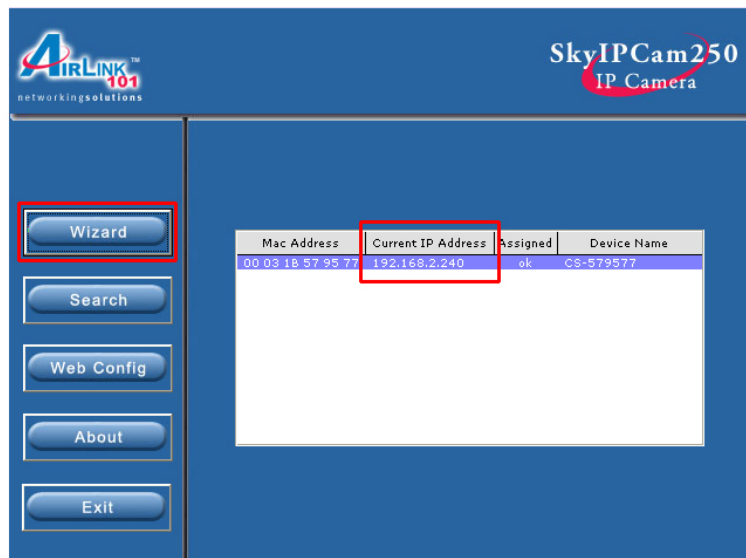
Step 6 Enter the **Subnet Mask** and **Gateway** fields with exactly the same values as you got from running **ipconfig**. Click **OK** to continue.



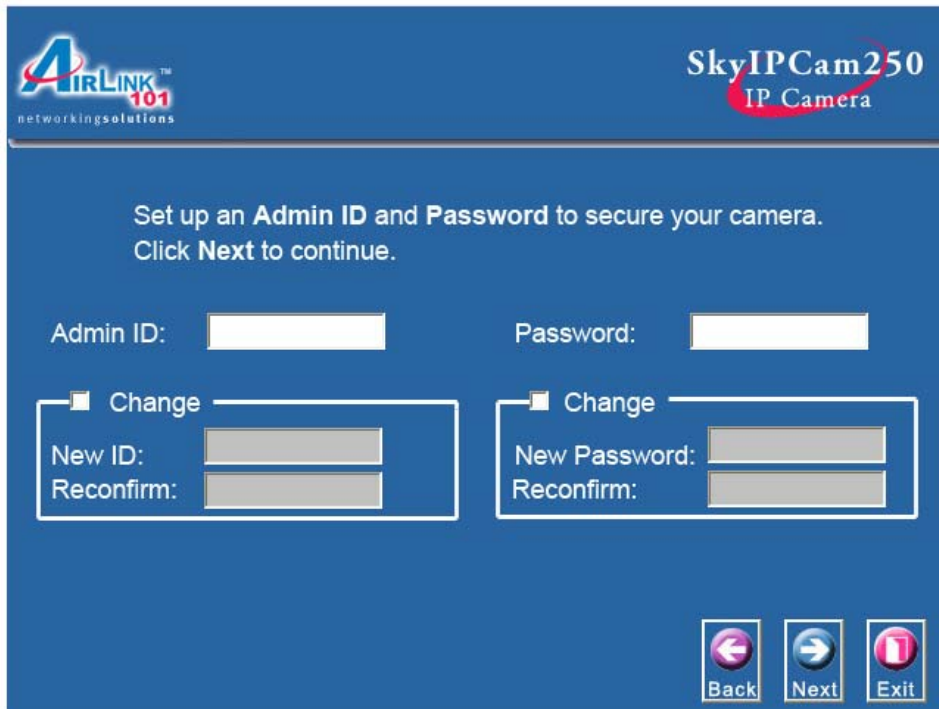
Step 7 After the Camera has restarted, click the **Exit** button to close the Setup Wizard.



Step 8 Start the Setup Wizard again and make sure the **Current IP Address** field displays the new IP Address. Select the Camera and click on the **Wizard** button.



Step 9 The Setup Wizard appears asking you to change the Admin ID and Password. The default Admin ID and Password is **admin**.



Step 10 Enter **admin** for both the **Admin ID** and **Password** field, click on the **Change** checkboxes and enter the **New ID** and **New Password** and click **Next**.



Step 11 If you need to change the Camera's IP Address because another network device is already using the same address, you can assign a new address here and click **Next**.

AIRLINK 101
networkingsolutions

SkyIPCam250
IP Camera

Set IP Address

| | |
|-----------------|--|
| IP Address | <input type="text" value="192.168.1.240"/> |
| Subnet Mask | <input type="text" value="255.255.255.0"/> |
| Default Gateway | <input type="text" value="192.168.1.1"/> |

Step 12 Verify all the fields are correct and click **Restart** to save the settings and reboot the Camera.

AIRLINK 101
networkingsolutions

SkyIPCam250
IP Camera

| | |
|-------------|--|
| Admin ID: | <input type="text" value="admin"/> |
| Password: | <input type="password" value="*****"/> |
| IP Address: | <input type="text" value="192.168.1.240"/> |
| Subnet: | <input type="text" value="255.255.255.0"/> |

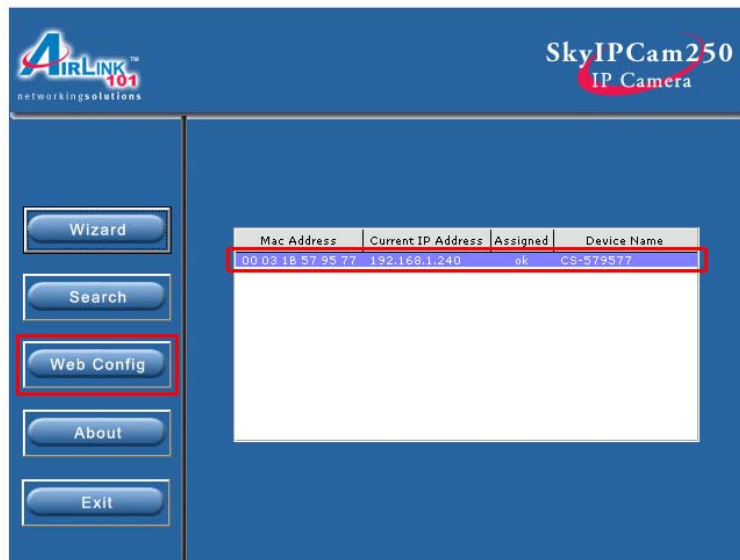
The Setup Wizard has completed. Click on **Back** to modify your settings. Click **Restart** to save your current settings and reboot the Internet Camera / Video Server.

Section 5

Viewing Images

Note: The following steps describe how to view images from within the same local area network as the IP Camera. To view images from an external network such as the Internet, please refer to the User's Manual on the provided CD for further instructions.

Step 1 At the Setup Wizard, select the desired camera from the list and click on the **Web Config** button.



Step 2 The default page appears. You can view live video by selecting either the **ActiveX Mode** (Internet Explorer) or the **Java Mode** (Internet Explorer and Netscape).

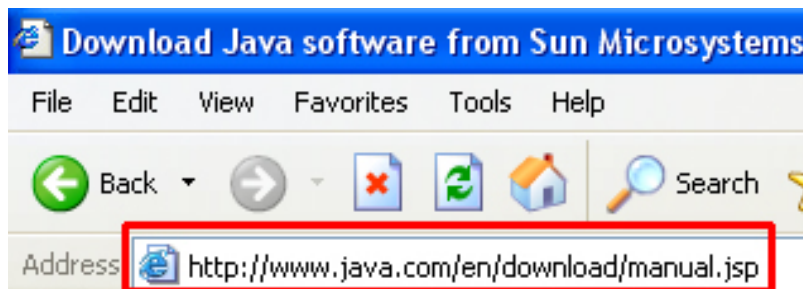


Step 3 Turn the Camera's lens clockwise or counter-clockwise to focus.



Note: ActiveX and/or Java Applet must be installed and enabled on your Web Browser (Internet Explorer or Netscape) before you can view the live videos. For more information, please refer to the User's Manual on the provided CD.

Step 4 If you need to install Java Virtual Machine on your computer, do not follow the on-screen XP instructions. Rather, go to www.java.com/en/download/manual.jsp and follow the instructions on that web site to download and install the required Java software.



The IP Camera is ready for use now.

Technical Support

E-mail: support@airlink101.com

Toll Free: 1-888-746-3238

Web Site: www.airlink101.com

