



SkyIPCam 250W Wireless Network Camera

Model # AIC250W

# Quick Installation Guide

# Section 1

*This Quick Installation Guide only provides the basic instructions. For more detailed information, please refer to the User's Manual in the supplied CD.*

## Getting Started

**Note:** Before using the IP Camera, you'll need to perform the following tasks:

1. Connect the IP Camera to your network.
2. Install the Setup Wizard.
3. Gather information about your local network address and wireless settings.
4. Configure the IP Camera using the Setup Wizard.

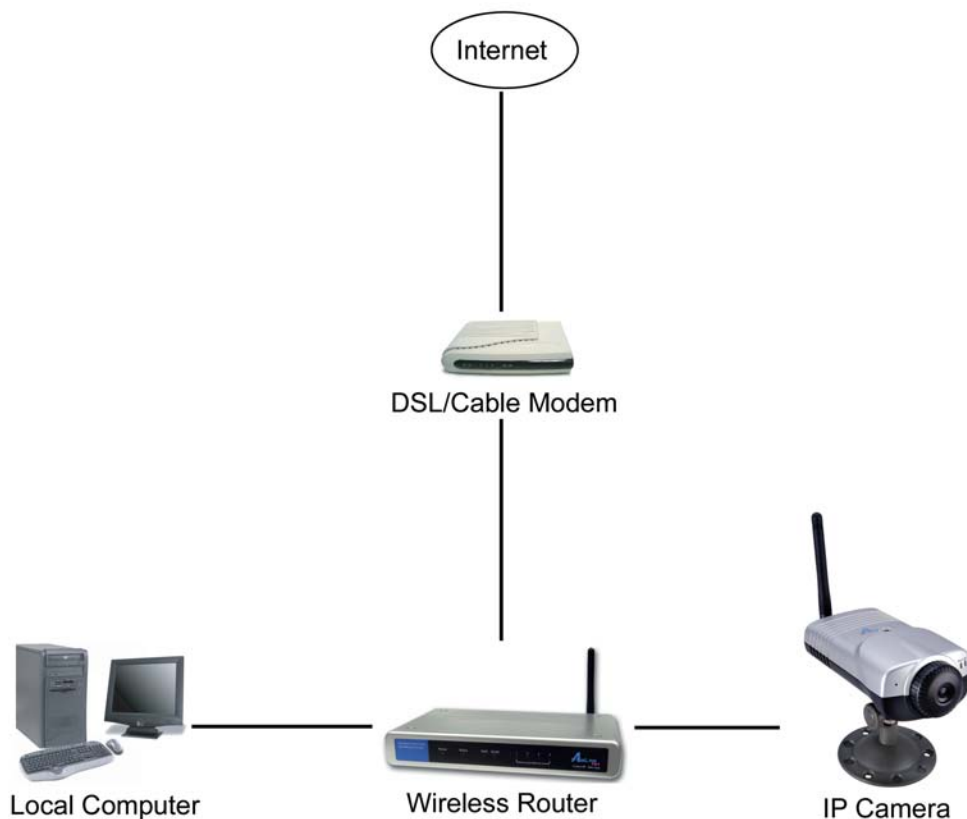
Please follow the steps in this Guide carefully to ensure proper setup of the IP Camera.

**Caution:** The IP Camera is designed for indoor use only. Direct exposure to sunlight may cause permanent damage to the CMOS sensor. When operating in extremely bright environment, an iris lens or sun visor is recommended to protect the IP Camera.

**Step 1** Connect one end of a network cable to the IP Camera and connect the other end to one of the **LAN** ports of the router or switch (See the diagram below).

**Step 2** Power on the IP Camera by connecting one end of the supplied power adapter to the power jack of the Camera and connecting the other end to an electrical outlet.

**Step 3** Verify that all the lights on the Camera are lit. If not, verify that all the connections are secure and try again.

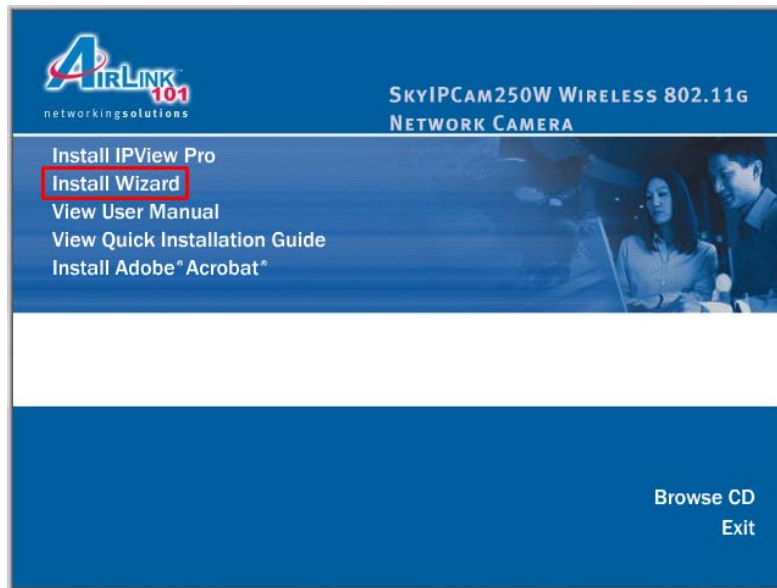


## Section 2

# Installing the Setup Wizard

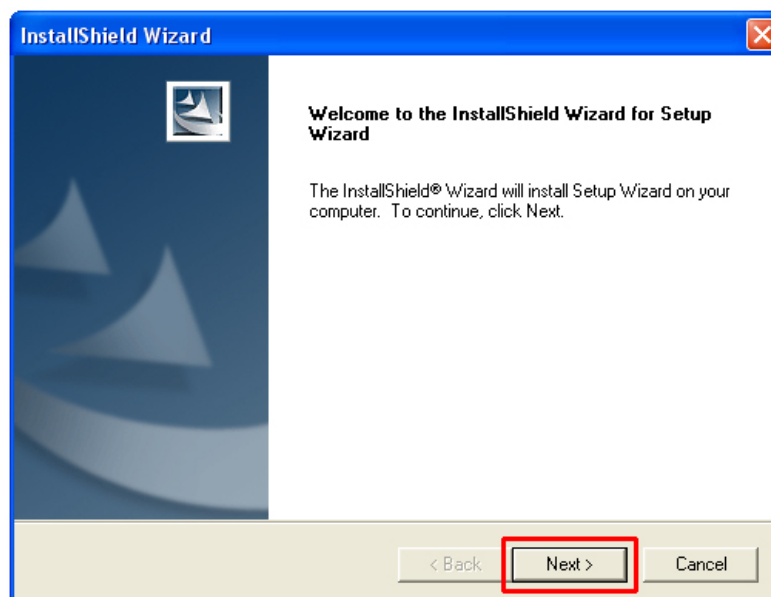
**Step 1** Insert the provided CD and wait for the autorun screen to appear.

**Step 2** Click on **Install Wizard**.

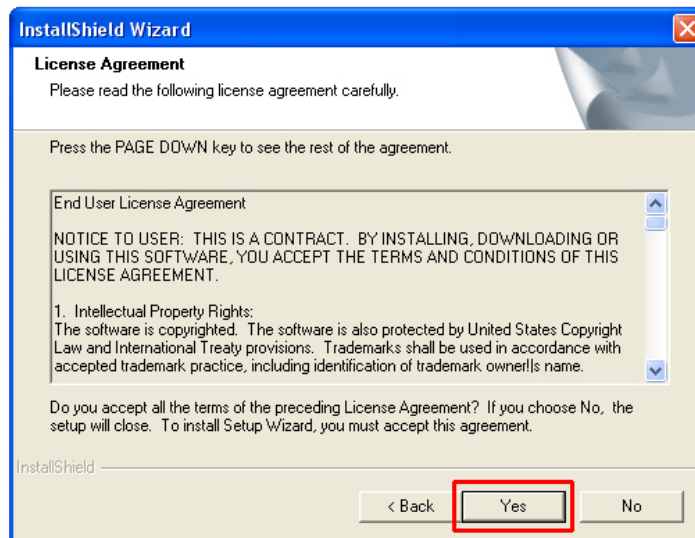


**Note:** If the autorun screen does not appear automatically, go to **Start, Run**, type **D:\autorun.exe** (where **D** is the letter of your CD drive) and click **OK**.

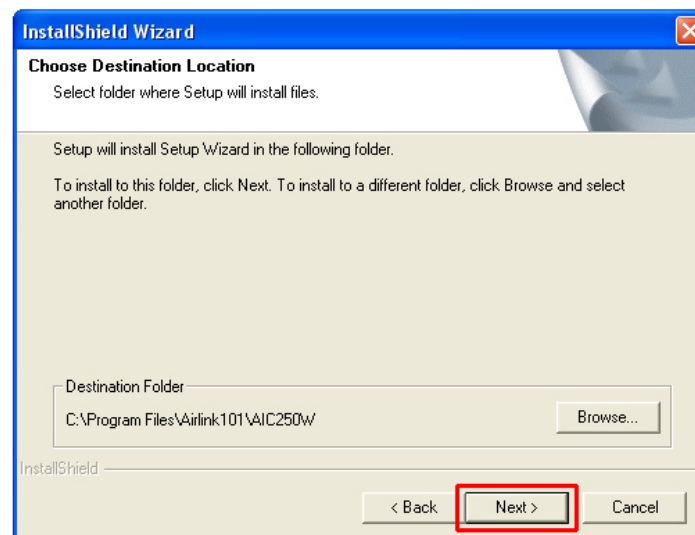
**Step 3** Click **Next**.



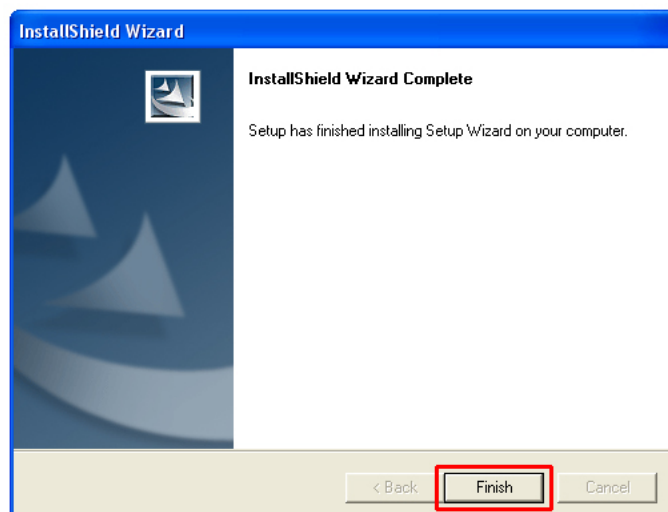
**Step 4** Click **Yes** to accept the License Agreement.



**Step 5** Click **Next** to accept the default Destination Folder.



**Step 6** Click **Finish** to complete the installation.

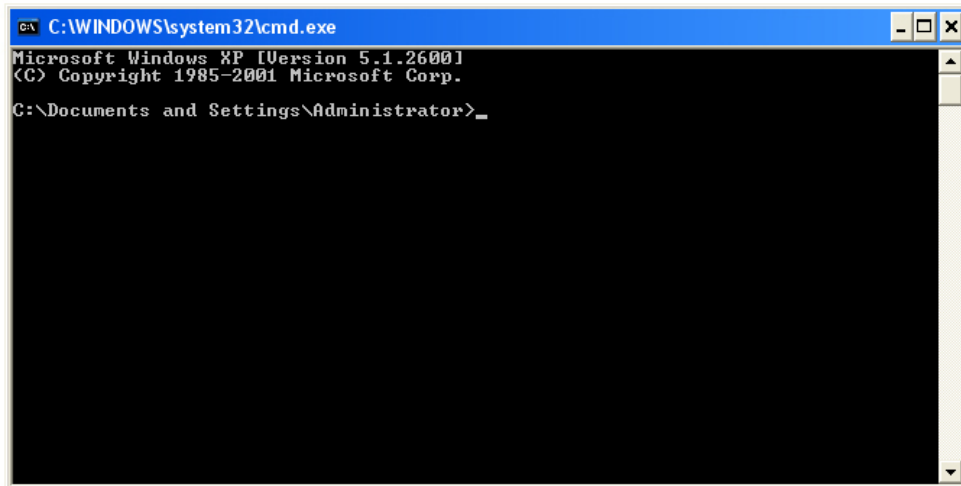


## Section 3

# Gathering Information

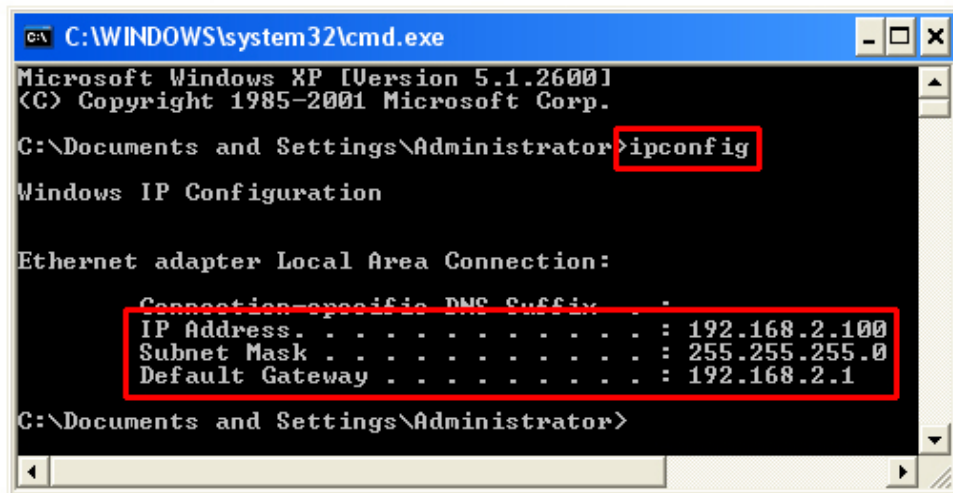
**Note:** Before using the Setup Wizard, you'll need to take note of your local network address and wireless settings.

**Step 1** Click on **Start, Run,** and type **command** (for Windows 95/98/ME) or **cmd** (for Windows 2000/XP) and click **OK**. The command prompt will appear.



```
C:\WINDOWS\system32\cmd.exe
Microsoft Windows XP [Version 5.1.2600]
(C) Copyright 1985-2001 Microsoft Corp.
C:\Documents and Settings\Administrator>
```

**Step 2** At the command prompt, type **ipconfig** and press **Enter**.



```
C:\WINDOWS\system32\cmd.exe
Microsoft Windows XP [Version 5.1.2600]
(C) Copyright 1985-2001 Microsoft Corp.
C:\Documents and Settings\Administrator>ipconfig

Windows IP Configuration

Ethernet adapter Local Area Connection:

    Connection-specific DNS Suffix . . . :
    IP Address . . . . . : 192.168.2.100
    Subnet Mask . . . . . : 255.255.255.0
    Default Gateway . . . . . : 192.168.2.1

C:\Documents and Settings\Administrator>
```

**Step 3** Write down the information for the **IP Address, Subnet Mask,** and **Default Gateway**.

**Step 4** Write down the following values for your wireless settings:

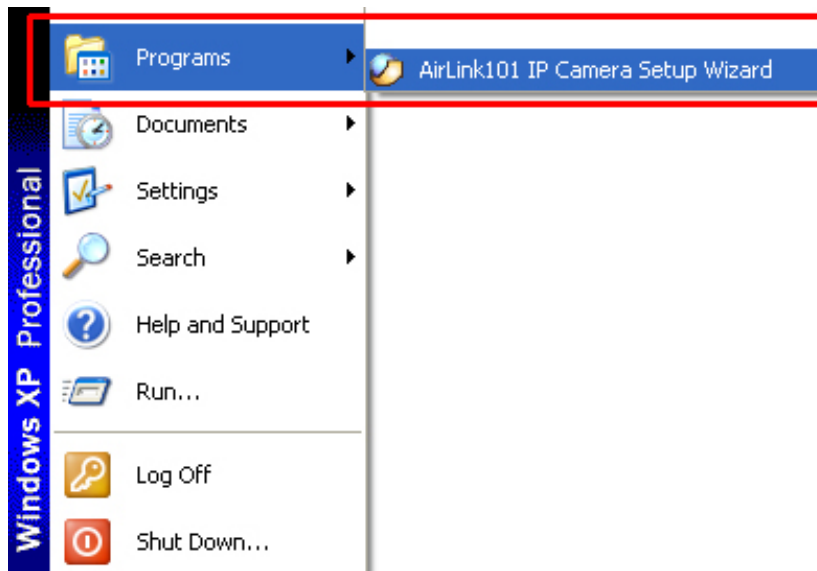
1. **Network Name (SSID)**
2. **Channel Number**
3. **Wireless Encryption Settings**

The IP Camera needs to use the same wireless settings in order for it to work properly. You may gather these information from the web configuration utility of your wireless router.

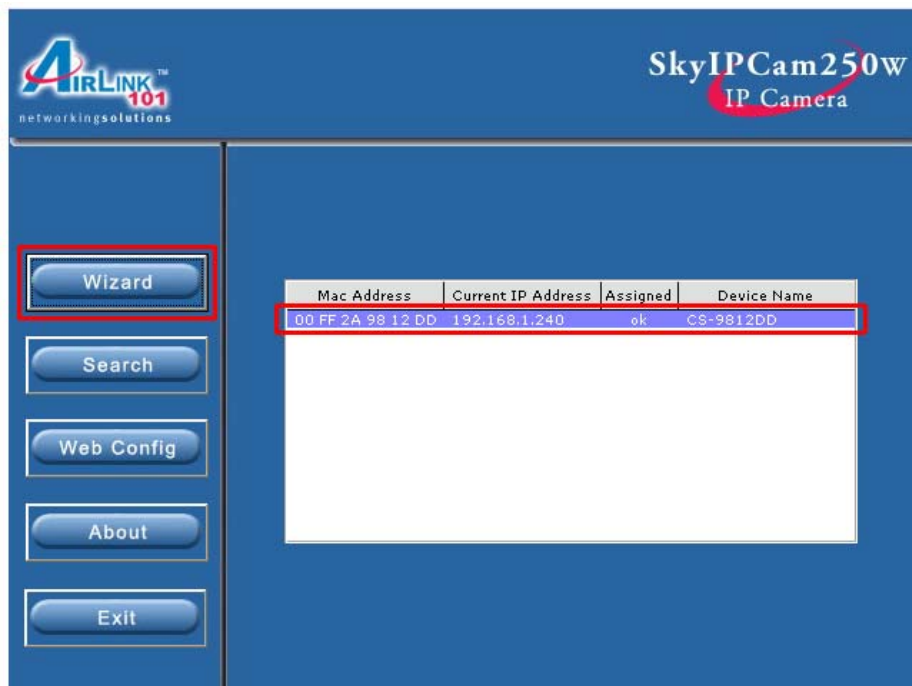
# Section 4

## Using the Setup Wizard

**Step 1** Go to **Start > (All) Programs > AirLink101 IP Camera Setup Wizard**.



**Step 2** Select the IP Camera you want to configure from the list and click on the **Wizard** button.



**Step 3** If the Camera's default IP Address is on a different subnet, the following message will appear. Click **Yes** to continue.



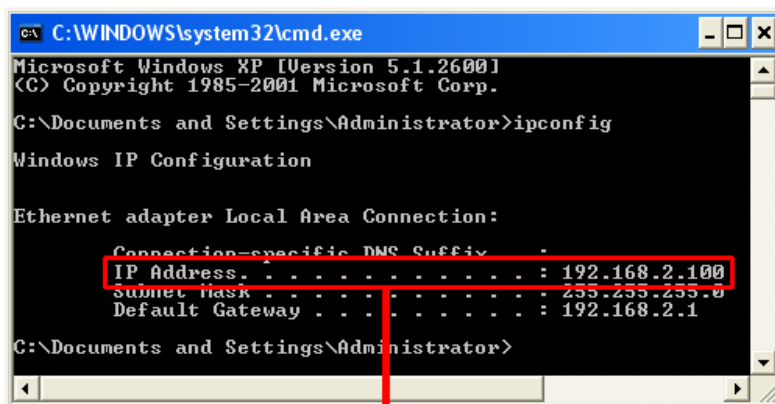
**Note:** If you do not receive this message, skip to **Step 9**.

**Step 4** Enter **admin** for both the Admin ID and Password and click **OK**.



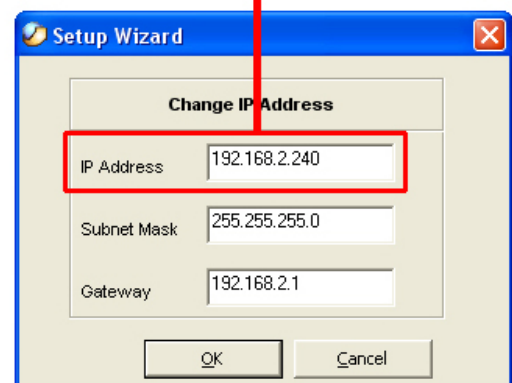
**Step 5** In the **IP Address** field, change the first three numbers to match your local network address.

**For example:** If your computer's **IP Address** is **192.168.2.100**, change the first three numbers to **192.168.2** as well but leave the last number **240** alone.

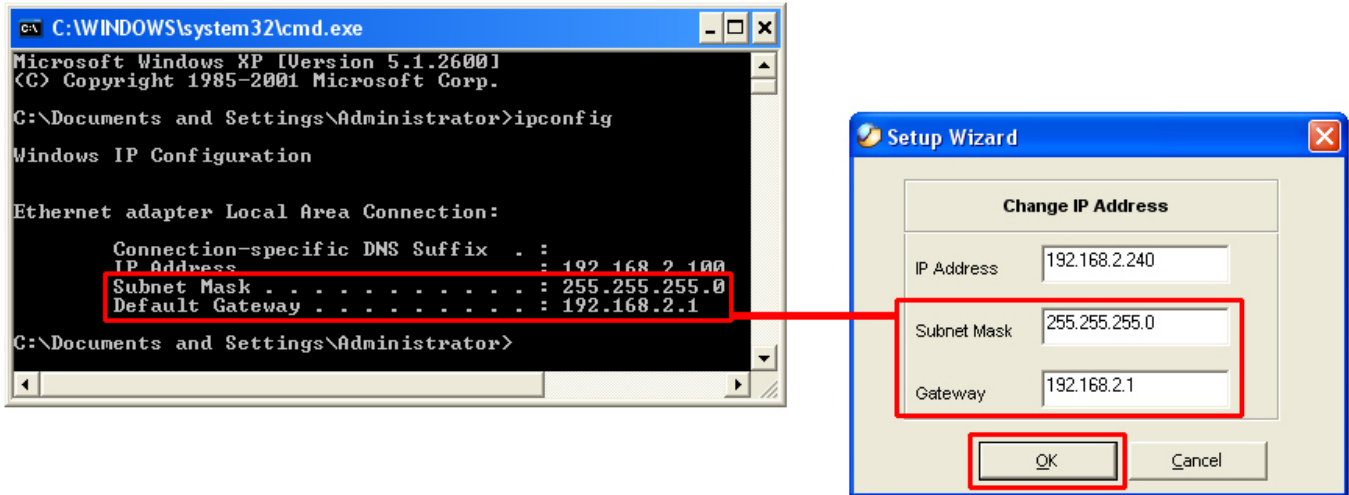


IP Address of your computer

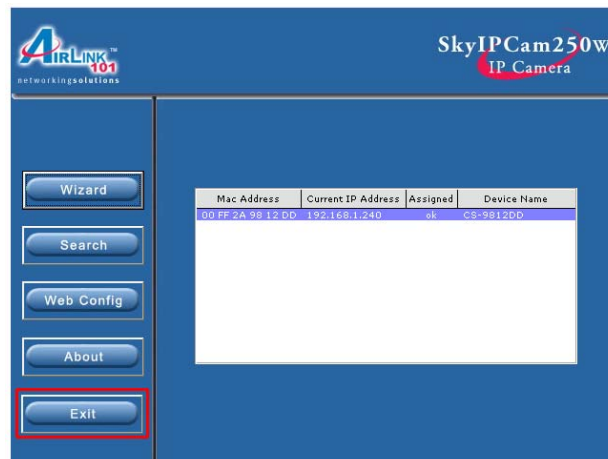
IP Address of the Camera



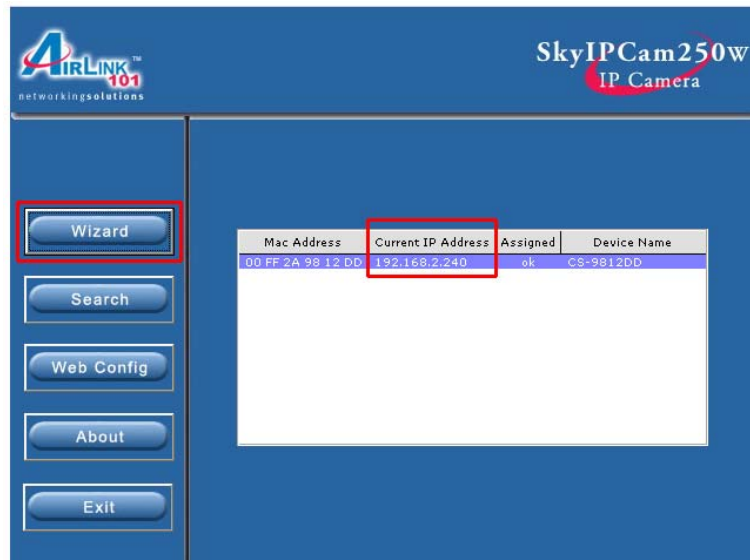
**Step 6** Enter the **Subnet Mask** and **Gateway** fields with exactly the same values as you got from running **ipconfig**. Click **OK** to continue.



**Step 7** After the Camera has restarted, click the **Exit** button to close the Setup Wizard.



**Step 8** Start the Setup Wizard again and make sure the **Current IP Address** field displays the new IP Address. Select the Camera and click on the **Wizard** button.



**Step 9** The Setup Wizard appears asking you to change the Admin ID and Password. The default Admin ID and Password is **admin**.



AIRLINK™ 101 networkingsolutions

SkyIPCam250W IP Camera

Set up an Admin ID and Password to secure your camera.  
Click Next to continue.

Admin ID:

Password:

Change

New ID:

Reconfirm:

Change

New Password:

Reconfirm:

Back Next Exit

**Step 10** Enter **admin** for both the **Admin ID** and **Password** field, click on the **Change** checkboxes and enter the **New ID** and **New Password** and click **Next**.



AIRLINK™ 101 networkingsolutions

SkyIPCam250W IP Camera

Set up an Admin ID and Password to secure your camera.  
Click Next to continue.

Admin ID:

Password:

Change

New ID:

Reconfirm:

Change

New Password:

Reconfirm:

Back Next Exit

**Step 11** If you need to change the Camera's IP Address because another network device is already using the same address, you can assign a new address here and click **Next**.

AIRLINK 101 networkingsolutions

SkyIPCam250w IP Camera

Set IP Address

IP Address: 192.168.1.240

Subnet Mask: 255.255.255.0

Default Gateway: 192.168.1.1

Back Next Exit

**Step 12** Enter the **Network Name (SSID)** of your access point / wireless router in the **SSID** field and select the encryption setting of your wireless network (**None / WEP / WPA-PSK**) from the **Security Mode** drop-down menu and click **Next**.

AIRLINK 101 networkingsolutions

SkyIPCam250w IP Camera

Wireless Interface

Wireless :  Enable  Disable

Connection Mode :  Infrastructure  Adhoc  Shared

Network Name (SSID):

Wireless Channel : 11

Security Mode : None

Authentication :  Both  Shared

Back Next Exit

**Note:** If you do not have wireless encryption enabled, you may skip to **Step 14**.



**Step 14** Click **Next**.

The screenshot shows the 'Wireless Interface' configuration page for the SkyIPCam250w IP Camera. The page has a blue header with the AIRLINK 101 logo on the left and the product name 'SkyIPCam250w IP Camera' on the right. The main content area is also blue and contains the following configuration options:

- Encryption Mode: 64 Bit (dropdown)
- Key Format: HEX (dropdown)
- Default Key: Key\_1 (dropdown)
- Key1: [text input]
- Key2: [text input]
- Key3: [text input]
- Key4: [text input]
- Pre-Shared Key: [text input with asterisks]

At the bottom right, there are three buttons: 'Back' (left arrow), 'Next' (right arrow, highlighted with a red box), and 'Exit' (power icon).

**Step 15** Verify that all the fields are correct and click **Restart** to save the settings and reboot the Camera.

The screenshot shows the completion screen of the SkyIPCam250w IP Camera configuration wizard. The page has a blue header with the AIRLINK 101 logo on the left and the product name 'SkyIPCam250w IP Camera' on the right. The main content area is also blue and contains the following configuration options:

- Administrator: admin
- Password: \*\*\*\*\*
- IP Address: 192.168.1.240
- Subnet: 255.255.255.0
- DNS1: 0.0.0.0
- DNS2: 0.0.0.0
- Wireless: Enable
- SSID: default
- Channel: 11
- WEP Key1: [text input]
- WEP Key2: [text input]
- WEP Key3: [text input]
- WEP Key4: [text input]
- Pre-Shared Key: [text input]

At the bottom, there is a message: "The Setup Wizard has completed. Click on **Back** to modify your settings. Click **Restart** to save your current settings and reboot the Wireless Internet Camera / Video Server."

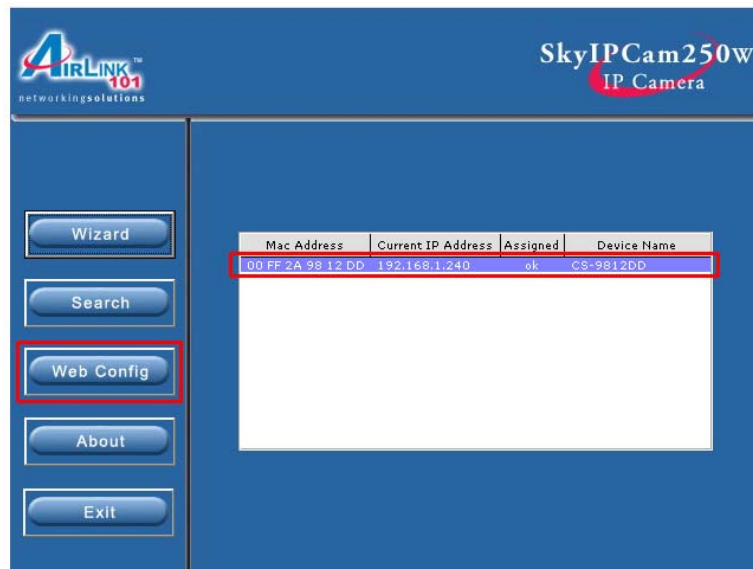
At the bottom right, there are two buttons: 'Back' (left arrow) and 'Restart' (refresh icon, highlighted with a red box).

# Section 5

## Viewing Images

**Note:** The following steps describe how to view images from within the same local area network as the IP Camera. To view images from an external network such as the Internet, please refer to the User's Manual on the provided CD for further instructions.

**Step 1** At the Setup Wizard, select the desired Camera from the list and click on the **Web Config** button.



**Step 2** The default page appears. You can view live video by selecting either the **ActiveX Mode** (Internet Explorer) or the **Java Mode** (Internet Explorer and Netscape).

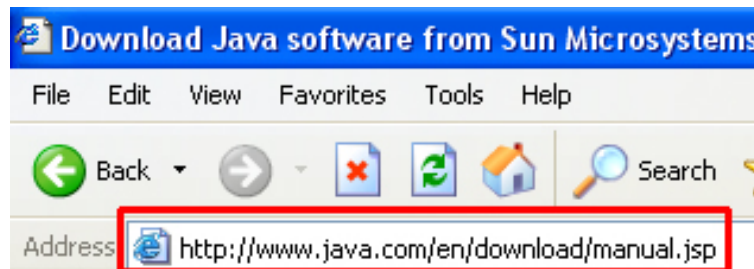


**Step 3** Turn the Camera's lens clockwise or counter-clockwise to focus.



**Note:** ActiveX and/or Java Applet must be installed and enabled on your Web Browser (Internet Explorer or Netscape) before you can view the live videos. For more information, please refer to the User's Manual on the provided CD.

**Step 4** If you need to install Java Virtual Machine on your computer, do not follow the on-screen XP instructions. Rather, go to [www.java.com/en/download/manual.jsp](http://www.java.com/en/download/manual.jsp) and follow the instructions on that web site to download and install the required Java software.



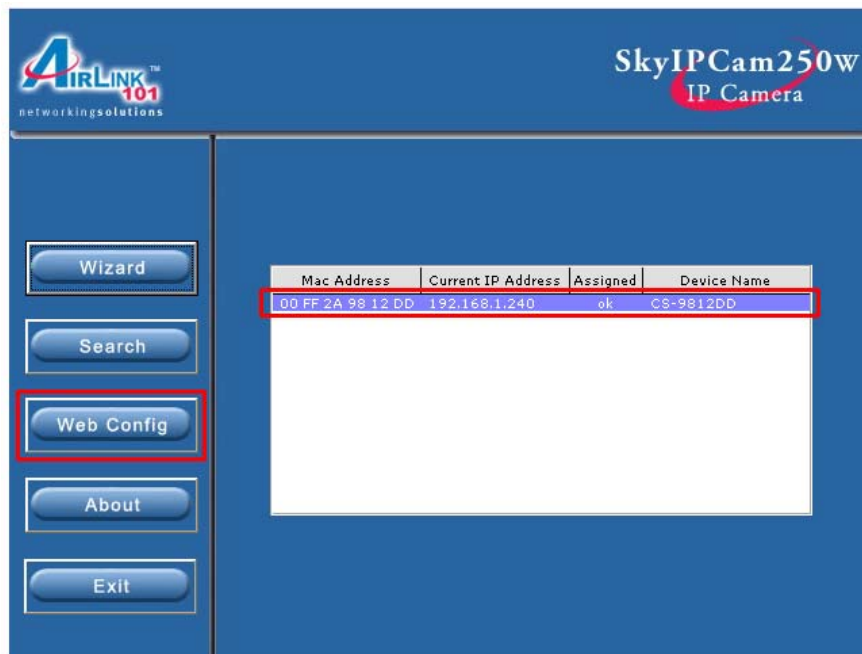
The IP Camera is ready for use now.

## Section 6

# Verifying Wireless Connection

**Note:** You should use a wired connection to verify the wireless connection status before unplugging the network cable from the IP Camera.

**Step 1** At the Setup Wizard, select the desired Camera from the list and click on the **Web Config** button.



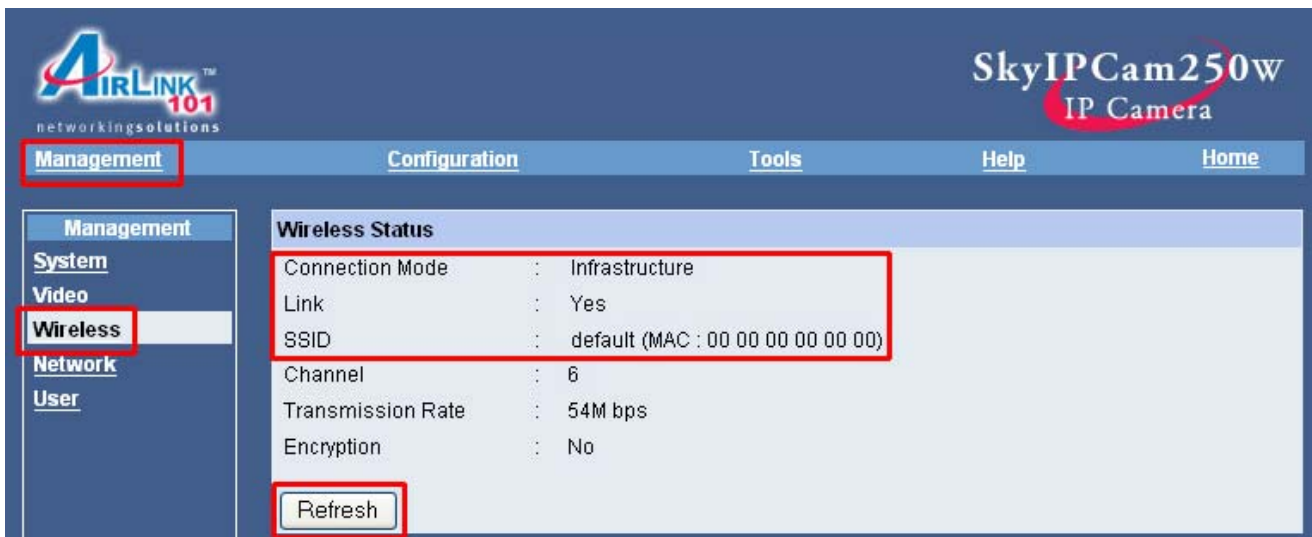
**Step 2** Click on **System Administration** to enter the Web Configuration Utility.



**Step 3** Enter **admin** for both the User name and Password and click **OK**.

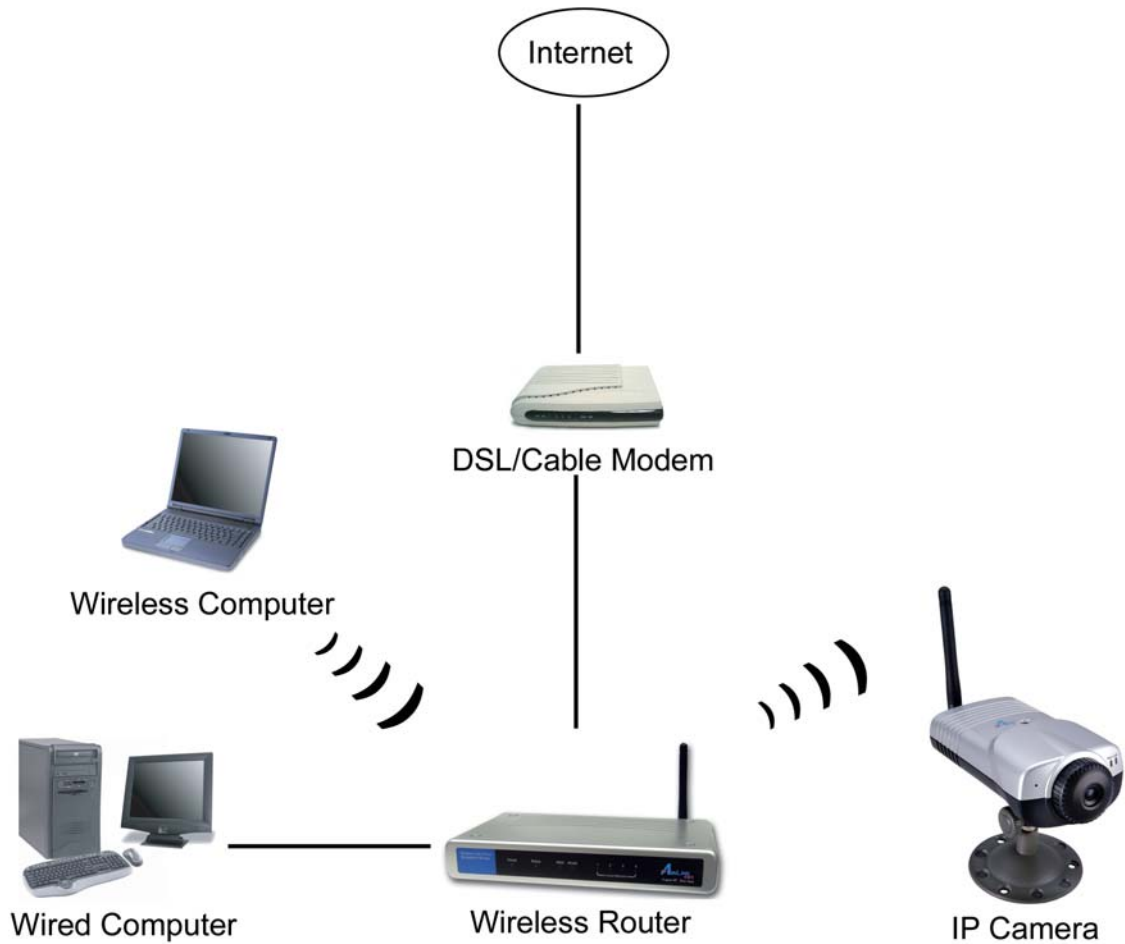


**Step 4** Click on **Wireless**. Verify that the **Connection Mode** is **Infrastructure** and the **Link** is **Yes**. Also verify that the SSID matches the SSID of your wireless router.



**Note:** If the **Link** does not say **Yes**, click on the **Refresh** button until it displays **Yes**.

**Step 5** Once the Link Status is **Yes**, you may unplug the Camera's network cable from the wireless router and place the Camera at the desired location.



## Technical Support

E-mail: [support@airlink101.com](mailto:support@airlink101.com)

Toll Free: 1-888-746-3238

Web Site: [www.airlink101.com](http://www.airlink101.com)

\*Theoretical maximum wireless signal rate based on IEEE standard 802.11g specifications. Actual data throughput will vary. Network conditions and environmental factors, including volume of network traffic, building materials and construction, mix of wireless products used, radio frequency interference (e.g., cordless telephones and microwaves) as well as network overhead lower actual data throughput rate.

Copyright © 2005 AirLink101. All rights reserved. AirLink101, the stylized AirLink101 logo, specific product designations, and all other words and logos that are identified as trademarks and/or service marks are, unless noted otherwise, the trademarks and service marks of AirLink101. All other product or service names are the property of their respective holders. AirLink101 products are protected under numerous U.S. and foreign patents and pending applications, mask work rights, and copyrights.