



1-Port Wireless USB 2.0 Print Server

Model # APSUSB201W

# Quick Installation Guide

# Section 1

## Connecting the Print Server

**Warning:** Only a USB printer may be connected to the USB port of the Print Server. Connecting any other USB device to the Print Server may damage the Print Server.

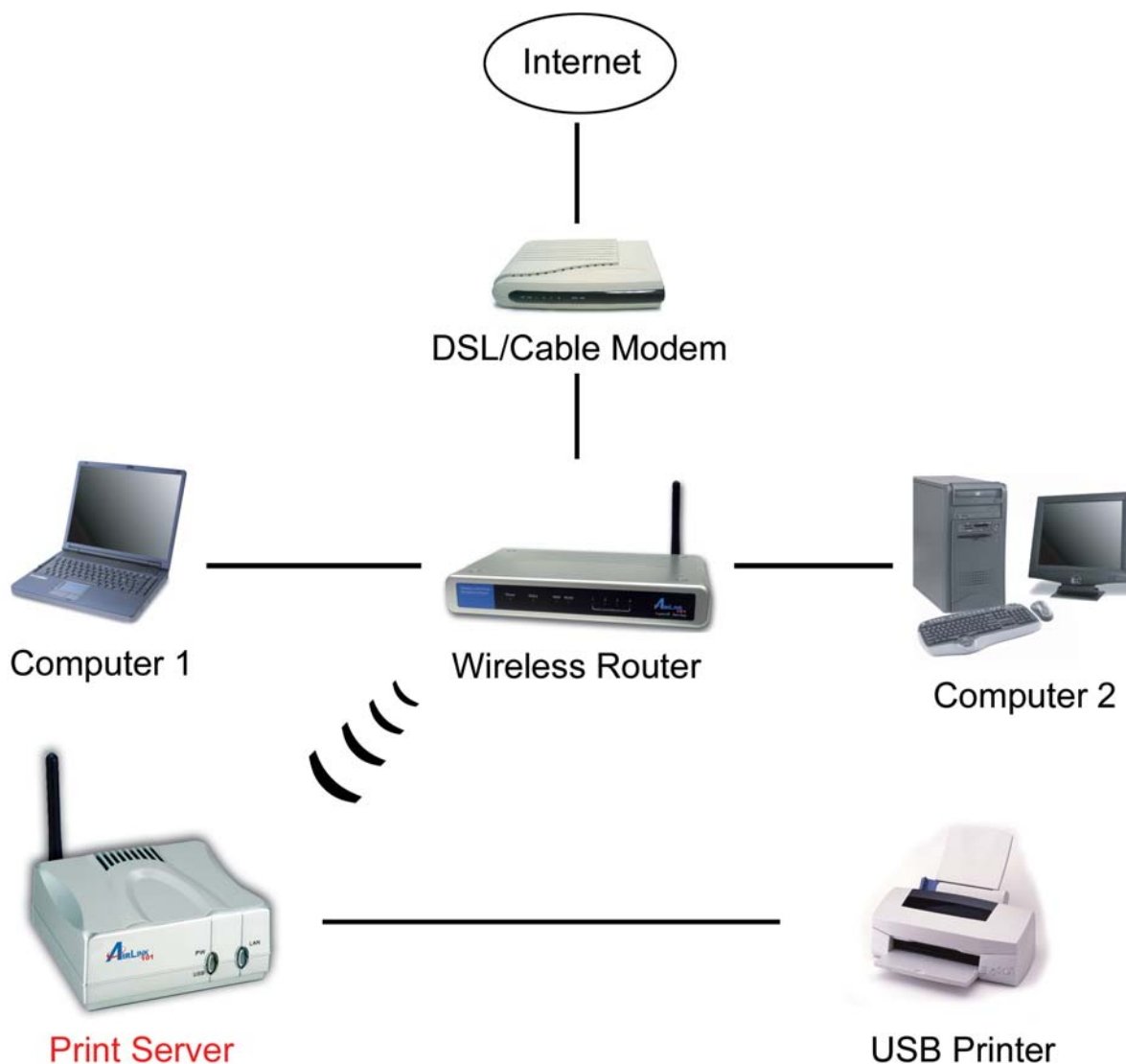
**Note:** Do not plug the power cord to the Print Server until you have reached **Step 4** of this section.

**Step 1** Connect one end of the Ethernet cable to the RJ-45 port of the Print Server and attach the other end of the cable to a wireless router. You may disconnect the Ethernet cable after a wireless connection is established.

**Step 2** Make sure the printer is powered **OFF**, then connect one end of the USB cable to the USB port of the Print Server and attach the other end of the cable to the USB port of the printer.

**Step 3** Power **ON** the printer.

**Step 4** Plug one end of the power cord into the Print Server and the other end into an electrical outlet.

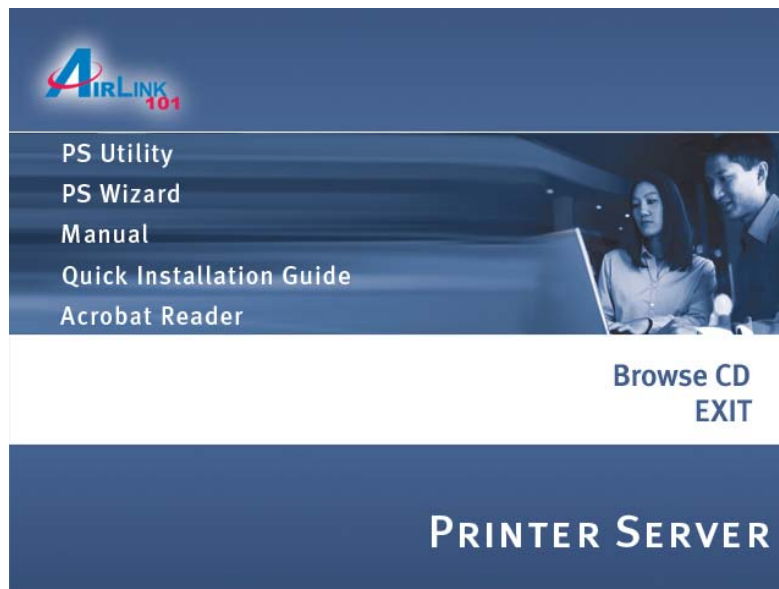


## Section 2

# Installing PS Utility

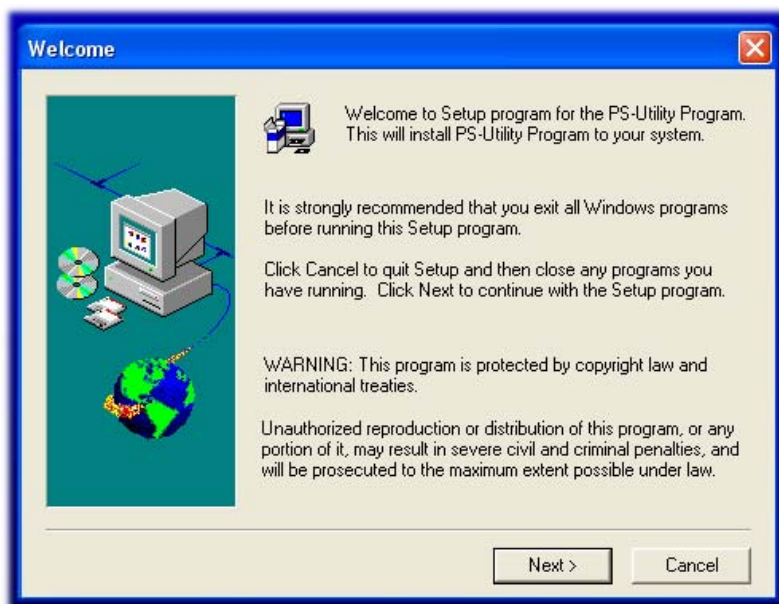
**Step 1** Insert the provided CD and wait for the setup menu to appear.

**Step 2** Click on **PS Utility**.

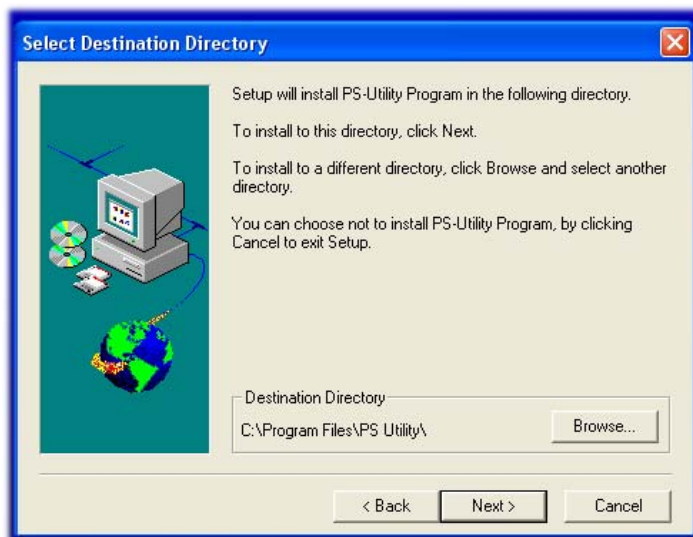


**Note:** If the setup menu does not appear automatically after you have inserted the CD, go to **Start, Run,** type **D:\autorun.exe** (where **D** is the letter of your CD drive) and click **OK**.

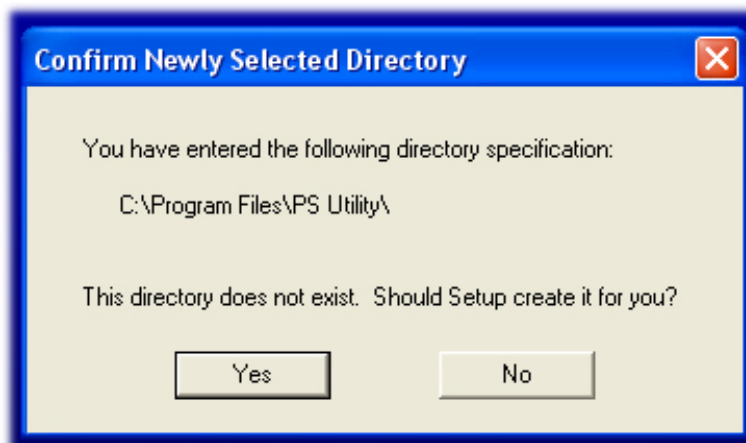
**Step 3** Click **Next**.



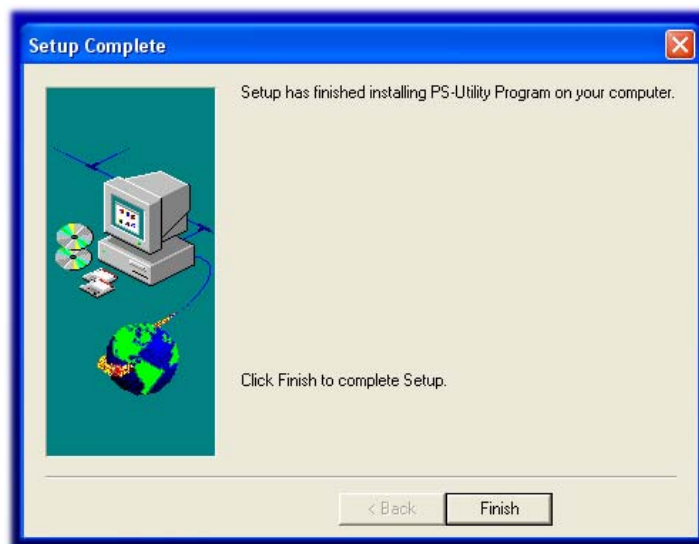
**Step 4** Click **Next**.



**Step 5** Click **Yes**.



**Step 6** Click **Finish**.



## Section 3

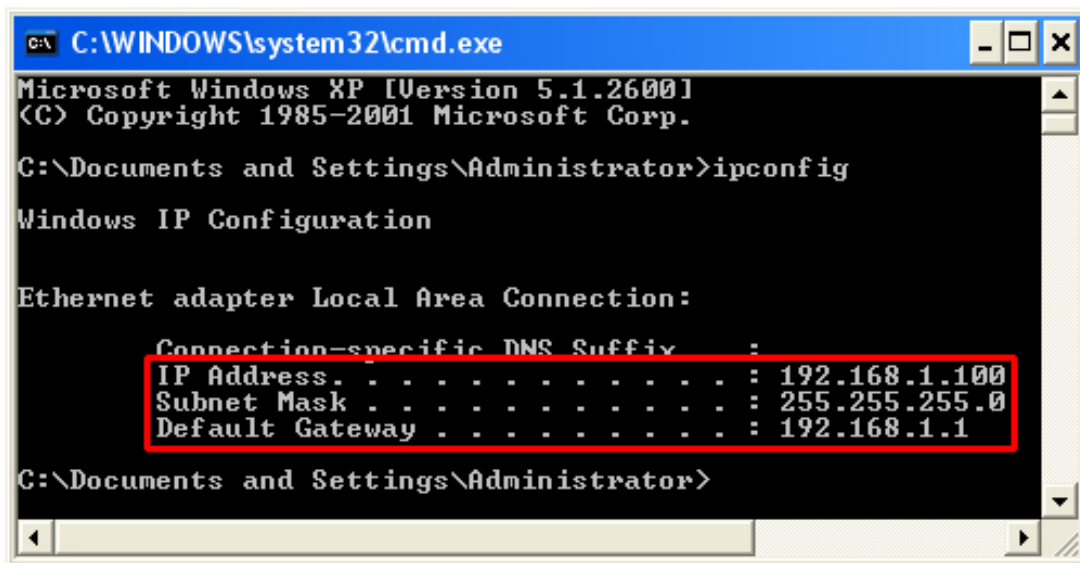
# Configuring Network Setting

Before configuring the Print Server's network setting, please take note of your computer's TCP/IP setting.

**Step 1** Click on **Start**, **Run**, and type **command** (for Windows 95/98/ME) or **cmd** (for Windows 2000/XP) and click **OK**.

**Step 2** At the command prompt, type **ipconfig** and press **Enter**.

**Step 3** Write down the information for the **IP Address**, **Subnet Mask**, and **Default Gateway**. You will need these information later.



```
C:\WINDOWS\system32\cmd.exe
Microsoft Windows XP [Version 5.1.2600]
(C) Copyright 1985-2001 Microsoft Corp.

C:\Documents and Settings\Administrator>ipconfig

Windows IP Configuration

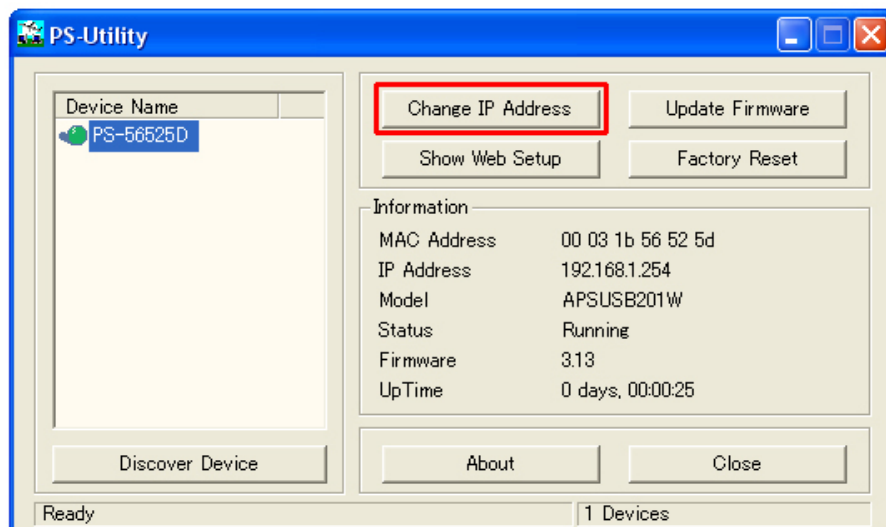
Ethernet adapter Local Area Connection:

    Connection-specific DNS Suffix  :
    IP Address. . . . . : 192.168.1.100
    Subnet Mask . . . . . : 255.255.255.0
    Default Gateway . . . . . : 192.168.1.1

C:\Documents and Settings\Administrator>
```

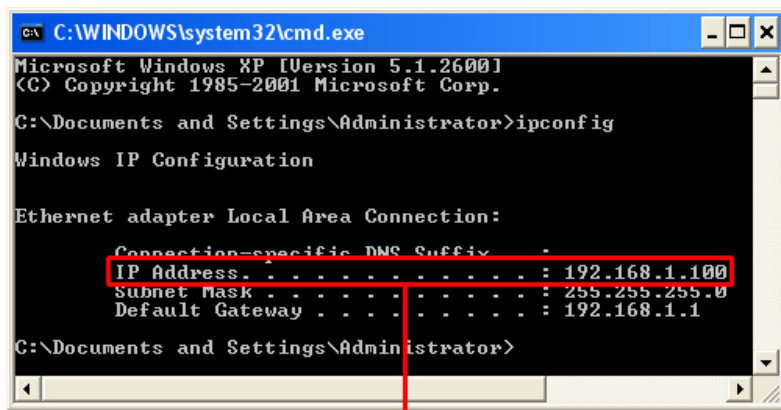
**Step 4** Run the PS Utility by going to **Start**, **(All) Programs**, **PS Utility**, **PS Utility v2.00**.

**Step 5** Make sure the Print Server is listed under the **Device Name** and click on **Change IP Address**.



**Step 6** In the **IP Address** field, enter a valid IP address, subnet mask, and default gateway that matches your local area network.

**For example:** If your computer's **IP Address** is **192.168.1.100**, enter the same three numbers: **192.168.1** in the corresponding fields.



```
C:\WINDOWS\system32\cmd.exe
Microsoft Windows XP [Version 5.1.2600]
(C) Copyright 1985-2001 Microsoft Corp.

C:\Documents and Settings\Administrator>ipconfig

Windows IP Configuration

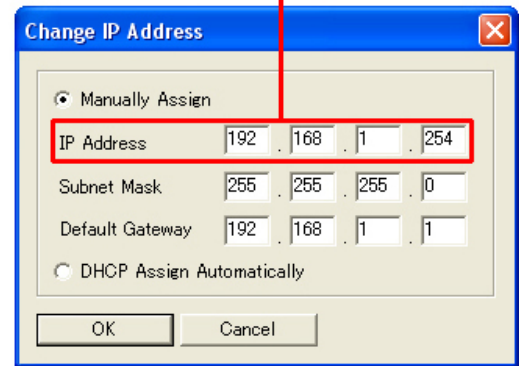
Ethernet adapter Local Area Connection:

    Connection-specific DNS Suffix . :
    IP Address . . . . . : 192.168.1.100
    Subnet mask . . . . . : 255.255.255.0
    Default Gateway . . . . . : 192.168.1.1

C:\Documents and Settings\Administrator>
```

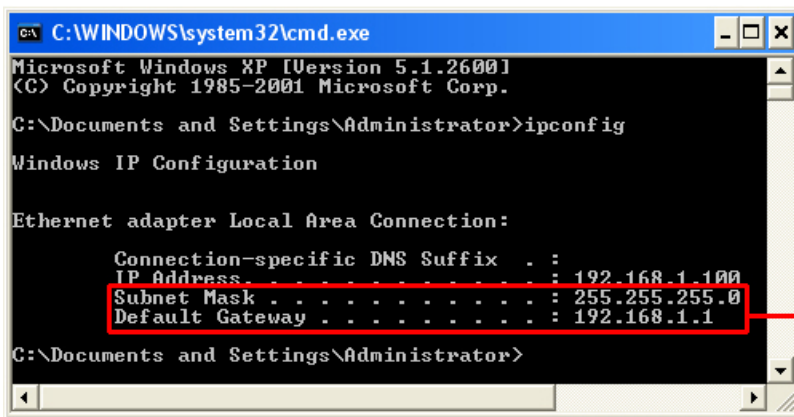
IP Address of your computer

IP Address of the Print Server



**Note:** You can leave the last IP Address number **254** as is unless another network device (i.e. the **Default Gateway**) is already using that number. If another network device is already using **254**, then change it to another number that is currently not in use (preferably **200 - 253**).

For the **Subnet Mask** and **Default Gateway** fields, enter the same number as the TCP/IP setting of your computer.



```
C:\WINDOWS\system32\cmd.exe
Microsoft Windows XP [Version 5.1.2600]
(C) Copyright 1985-2001 Microsoft Corp.

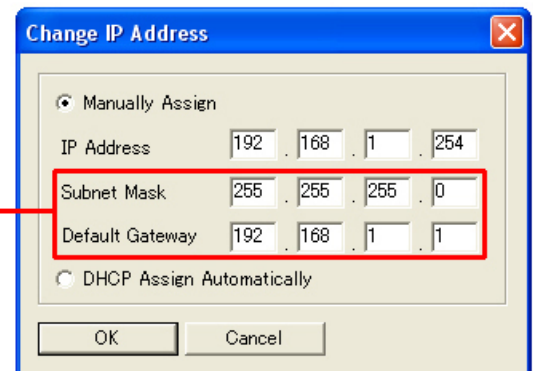
C:\Documents and Settings\Administrator>ipconfig

Windows IP Configuration

Ethernet adapter Local Area Connection:

    Connection-specific DNS Suffix . :
    IP Address . . . . . : 192.168.1.100
    Subnet Mask . . . . . : 255.255.255.0
    Default Gateway . . . . . : 192.168.1.1

C:\Documents and Settings\Administrator>
```



**Step 7** Click **OK**.

**Step 8** Close the PS Utility program.

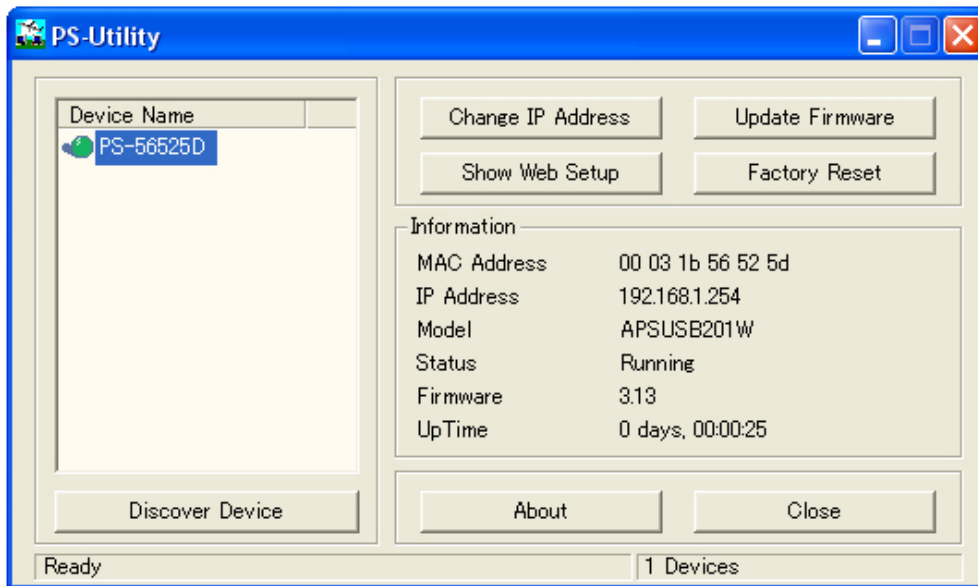
# Section 4

## Verifying Network Connection

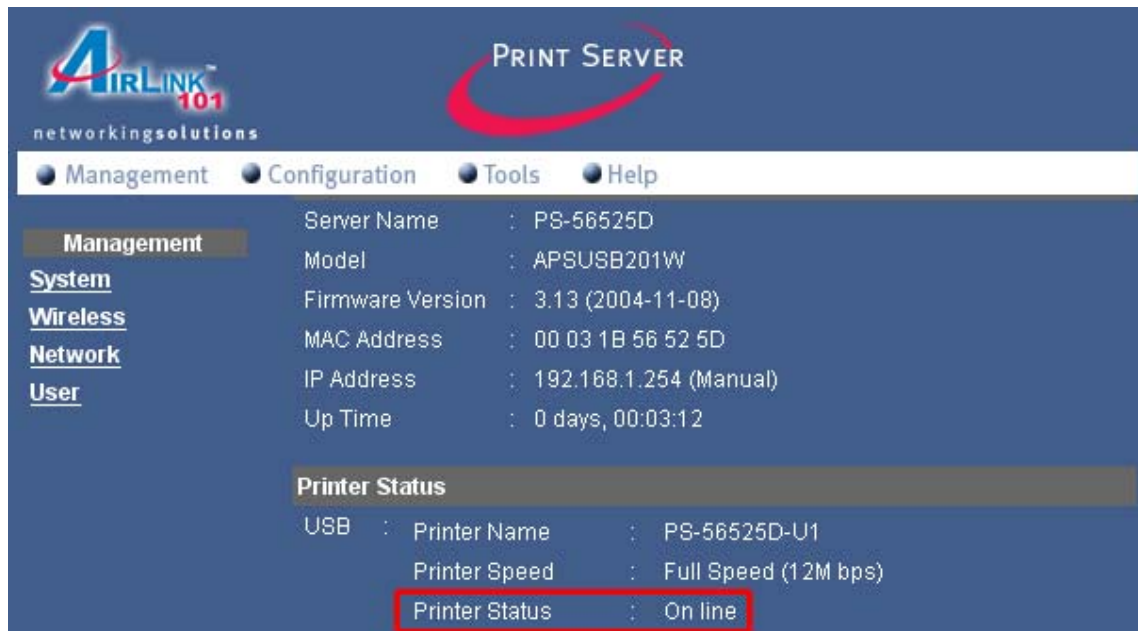
**Step 1** Run the PS Utility by going to **Start, (All) Programs, PS Utility, PS Utility v2.00.**

**Step 2** Make sure the Print Server is detected under the **Device Name.**

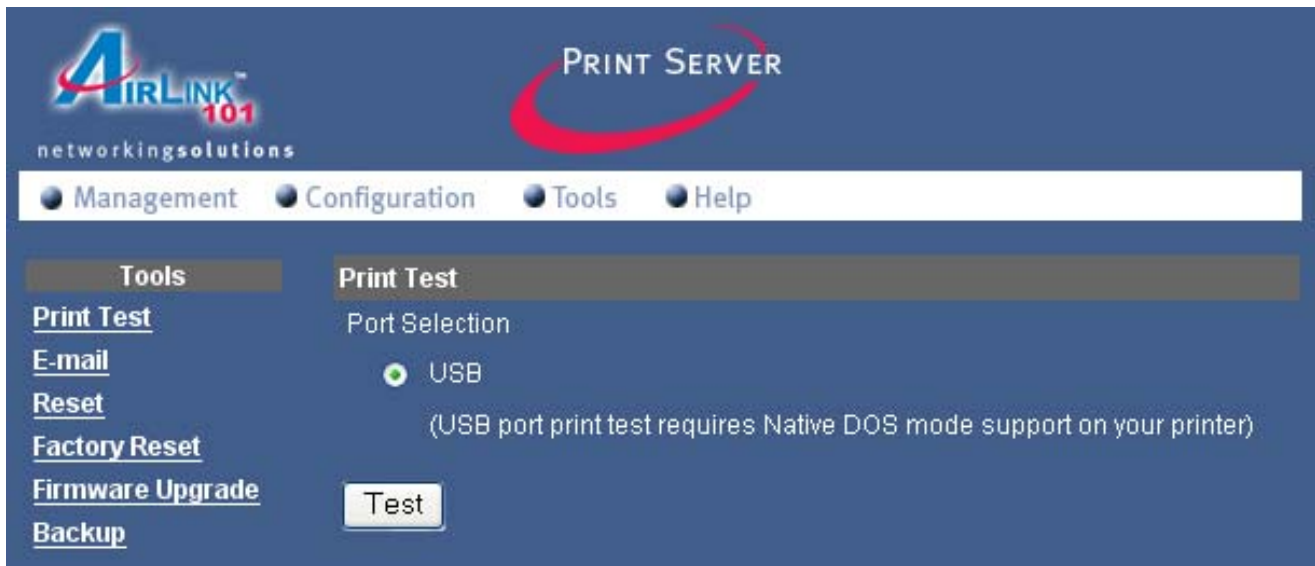
**Step 3** Click on **Show Web Setup** to display the Print Server's **Web Configuration Utility.**



**Step 4** Make sure the **Printer Status** displays **On line.**



**Step 5** Click on the **Tools** link and select the port your printer is connected to and click the **Test** button. The Print Server will perform a low-level print test, bypassing the operating system layer.



**Note:** Your printer should print out a test page. If not, verify that the printer is powered on and all cables are securely connected and try again. If the printer still fails to print a test page, please check the printer compatibility list on our web site at [www.airlink101.com](http://www.airlink101.com) for a list of compatible printers. If your printer is not on the list, it may not be compatible with the Print Server.

**Step 6** Once the printer successfully prints out a test page, you may close the web browser and proceed to the next section.

# Section 5

## Running PS Wizard

**Warning:** Make sure you have installed the printer driver locally on every computer that will use the print server in your network before running the PS Wizard. Otherwise, the PS Wizard will not run properly. Be sure to run the PS Wizard on all the computers that will use the print server in your network.

**Step 1** Insert the provided CD and wait for the setup menu to appear.

**Step 2** Click on **PS Wizard**.

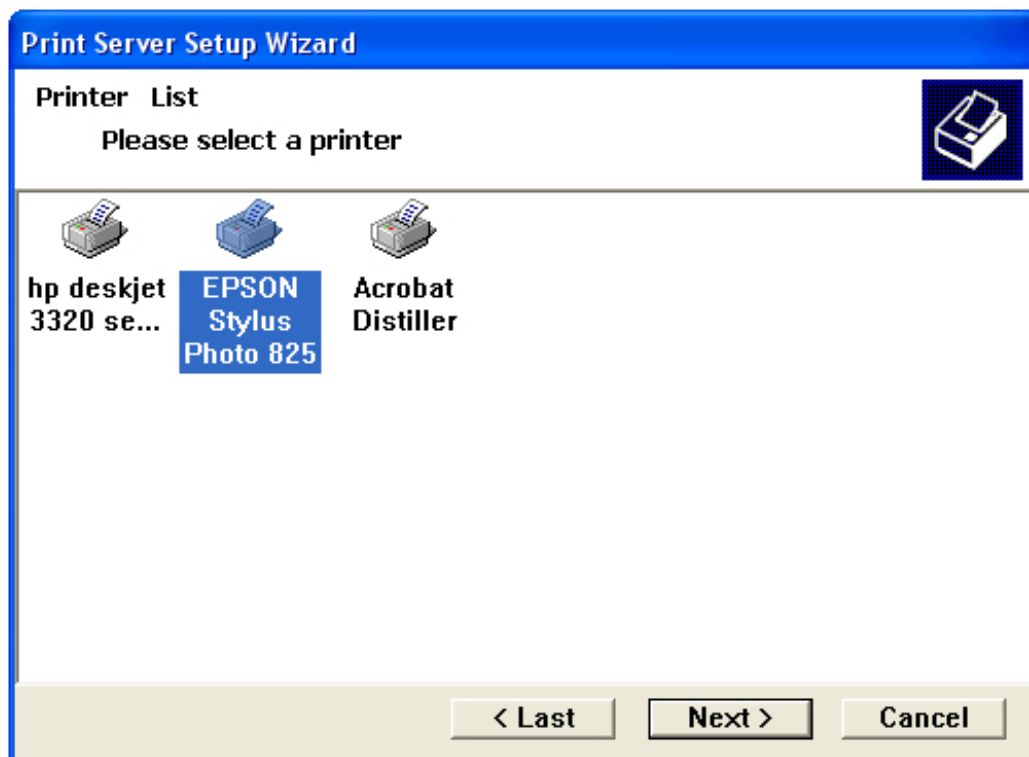


**Note:** If the setup menu does not appear automatically after you have inserted the CD, go to **Start, Run,** type **D:\autorun.exe** (where **D** is the letter of your CD drive) and click **OK**.

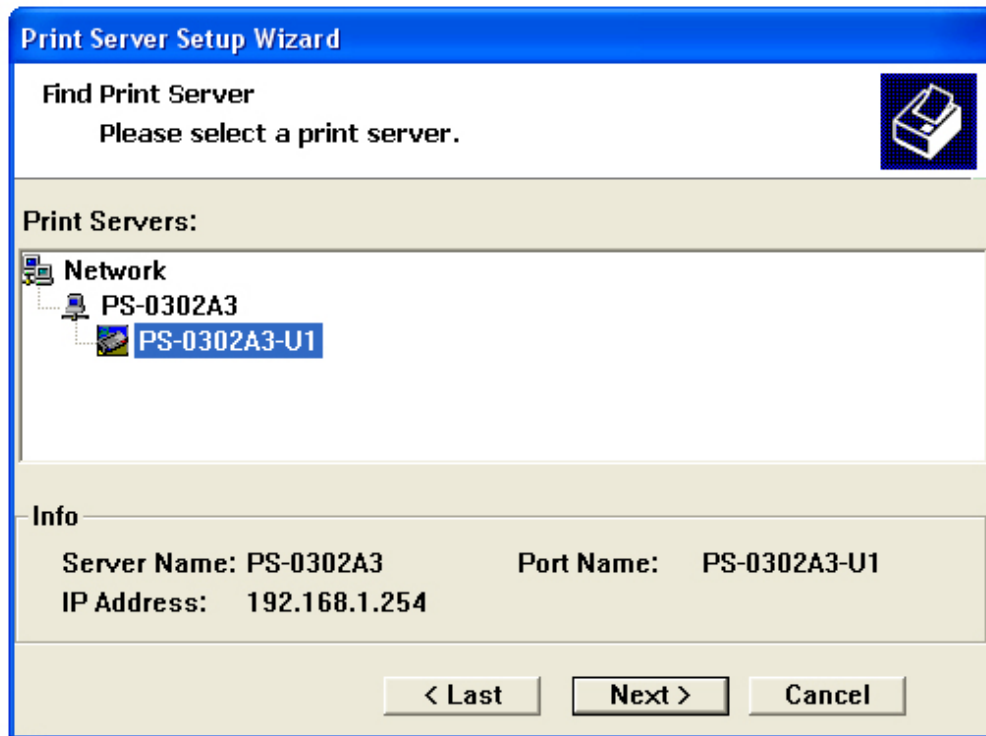
**Step 3** Click **Next**.



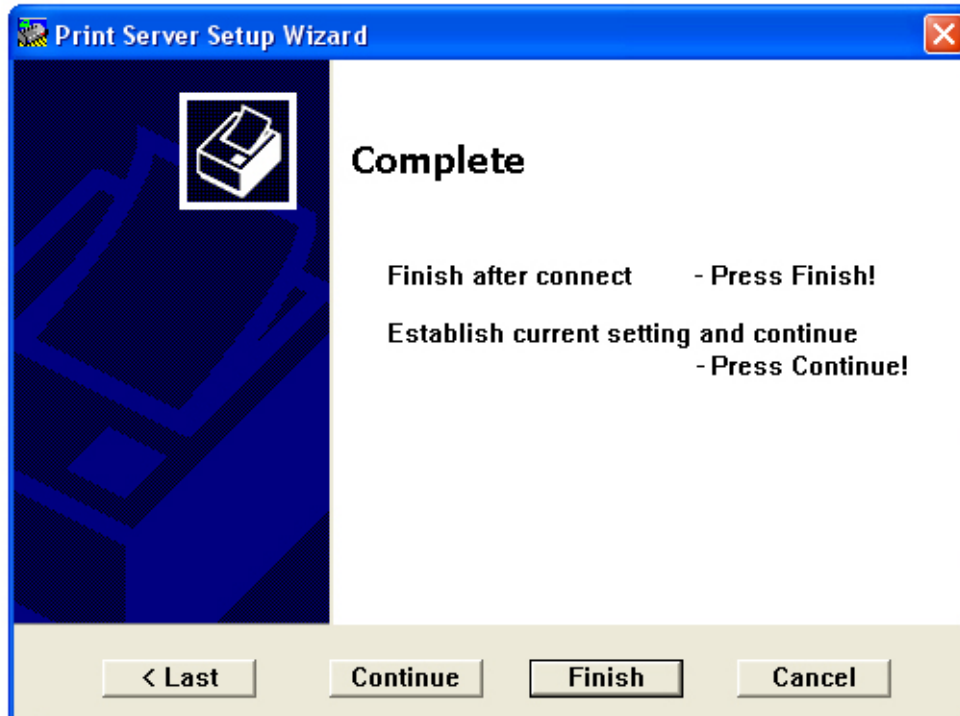
**Step 4** Select the printer that is connected to the print server and click **Next**.



**Step 5** Double-click on the **Print Server Name**, select the **Printer Port Name**, and click **Next**.



**Step 6** Click **Finish** and **OK**. (For Windows 95/98/ME, you'll need to reboot the computer).



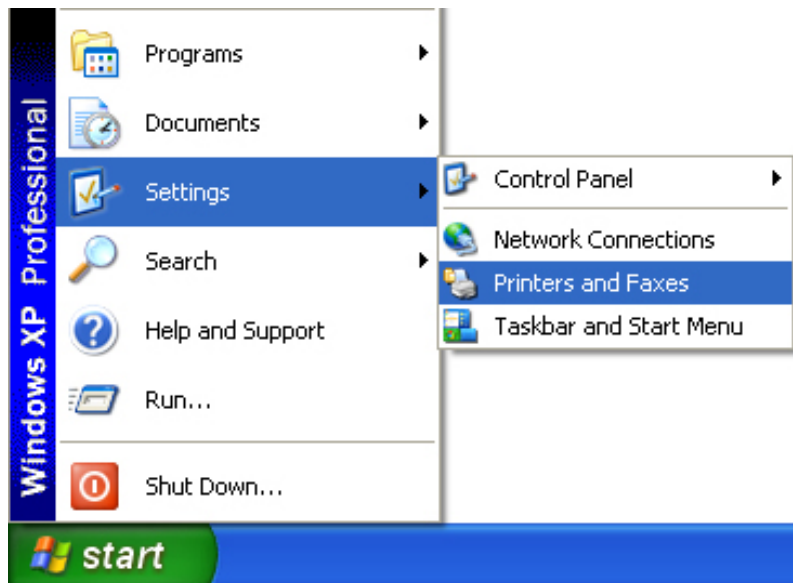
**Step 7** Run the **PS Wizard** on all the computers in your network that will use the print server.

# Section 6

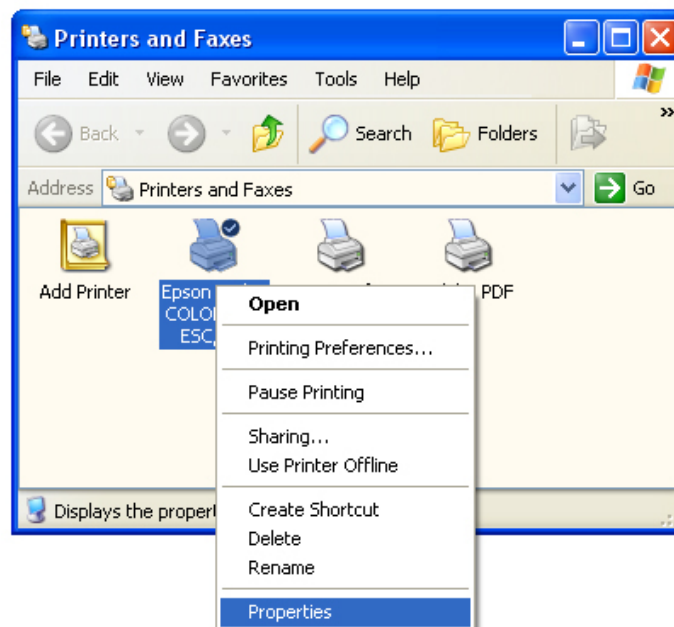
## Performing Operating System Print Test

The final step in setting up the Print Server is to perform an operating system print test. Please note that the instructions below are for Windows XP, but the steps are similar for all the other Windows operating systems.

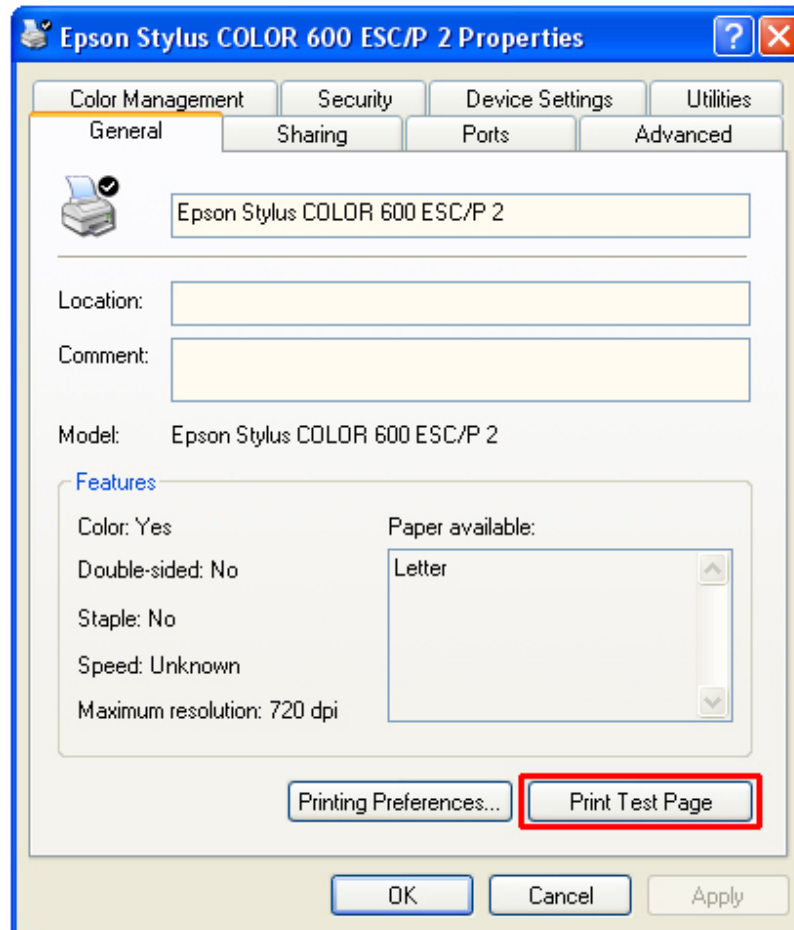
**Step 1** Click on **Start, Settings, Printers and Faxes.**



**Step 2** Right-click on the printer that is connected to the Print Server and select **Properties.**



**Step 3** Click on the **Print Test Page** button. Windows should print out a test page.



**You have successfully configured the Print Server for printing.**

# Section 7

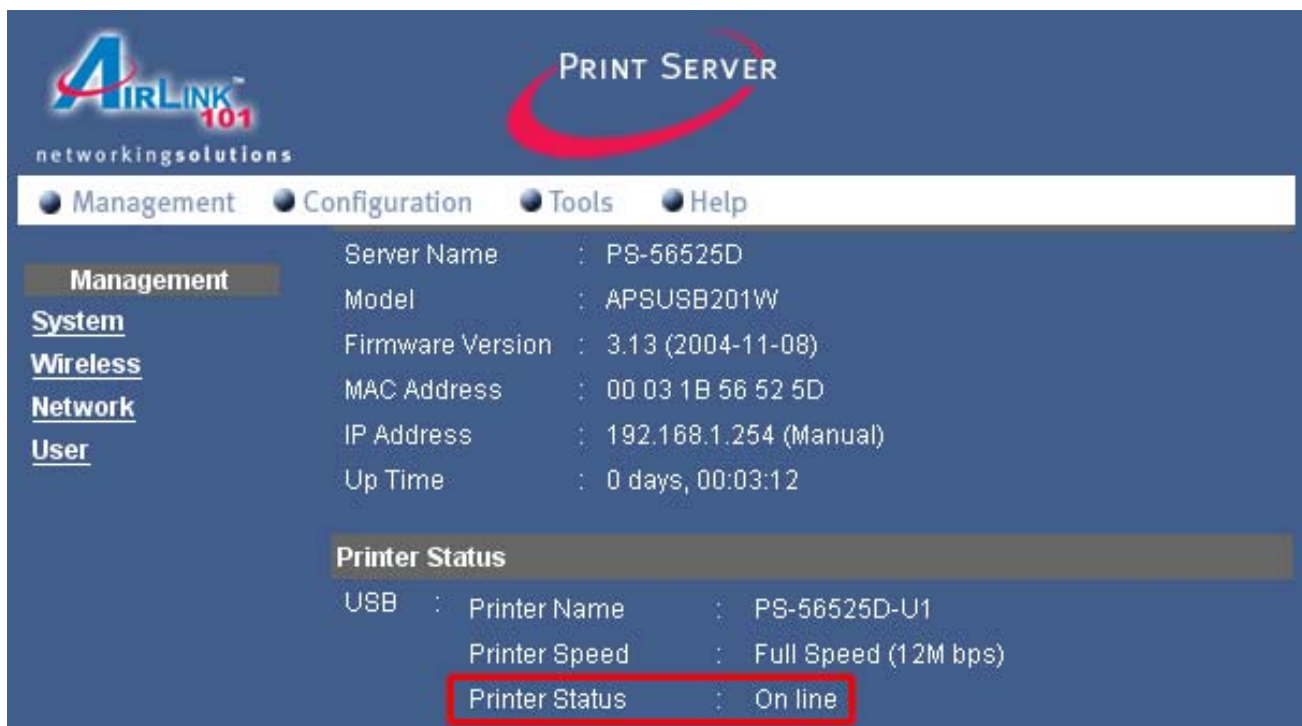
## Configuring Wireless Printing

The following section describes how to setup the Print Server for wireless printing. It is strongly recommended that you test the Print Server with a wired connection first before moving on to configure wireless printing.

**Note:** You should use a wired connection to configure the following wireless settings before unplugging the network cable from the Print Server.

**Step 1** Open the web browser and type in the IP address of your Print Server. (Default is **192.168.1.254**)

**Step 2** Verify the Printer Status is **On line**.



The screenshot displays the web interface for the AIRLINK 101 PRINT SERVER. The interface has a dark blue background with a white navigation bar at the top containing 'Management', 'Configuration', 'Tools', and 'Help'. The 'Management' section is active, showing a list of system information on the left and a 'Printer Status' section on the right. The 'Printer Status' section is highlighted with a red box, showing the printer is 'On line'.

System Information	
Server Name	: PS-56525D
Model	: APSUSB201W
Firmware Version	: 3.13 (2004-11-08)
MAC Address	: 00 03 1B 56 52 5D
IP Address	: 192.168.1.254 (Manual)
Up Time	: 0 days, 00:03:12

Printer Status		
USB	Printer Name	: PS-56525D-U1
	Printer Speed	: Full Speed (12M bps)
	Printer Status	: On line

**Step 3** Click on **Configuration** and then **Wireless**.

**Step 4** If you are printing through a wireless router, make sure the **Connection Mode** is set to **Infrastructure**.

The screenshot shows the configuration interface for the AIRLINK 101 PRINT SERVER. The 'Wireless Interface' section is highlighted with a red box. It contains the following settings:

- Connection Mode:** Infrastructure (selected), Ad-Hoc
- SSID:** default (text input), (Manually Input or Select from List)
- Site Survey:** Button
- Wireless Channel:** 11 (dropdown)
- Transmission Rate:** Fully Automatic (dropdown)

Below the highlighted section, the 'WEP Encryption' section is visible with 'Disable' selected. The 'Advanced Setting' section includes 'Beacon Interval' (100 ms), 'Preamble' (Long), and 'Authentication Type' (Both).

**Step 5** Type in the **SSID** (network name) of your wireless router in the **SSID field**, or use the drop-down menu directly below the **SSID field** to choose your wireless router.

**Note:** you can also click on the **Site Survey** button to view all the available wireless network. If you do not see your wireless router, click on **Refresh** and/or reset your wireless router.

**On Site Wireless Networks**

	SSID	MAC	Channel	Mode	WEP	Signal
1	default	00 0D 72 20 1D 29	6	Infrastructure	Yes	37%
2	BullPenH2	00 02 2D 8A E0 36	11	Infrastructure	No	35%
3	HomeNetwork	00 09 5B DD 2A FC	11	Infrastructure	No	34%
4	tcclin_home	00 09 5B FB 78 3A	11	Infrastructure	Yes	34%

Refresh Close

**Step 6** Click **Save** to save the settings.

**Step 7** Click on **Management** and go to **Wireless**. Verify that the **Connection Mode** is **Infrastructure** and the **Link** is **Yes**. Also verify that the SSID matches the SSID of your wireless router.

Management	
System	
Wireless	
Network	
User	

Wireless Status	
Connection Mode	: Infrastructure
Link	: Yes
SSID	: default (MAC : 00 03 1B 56 52 5D)
Channel	: 11
Transmission Rate	: 54M bps
WEP Encryption	: Disable
Tx Packets	: 0
Tx Errors	: 0
Rx Packets	: 0
Rx Errors	: 0

Refresh

**Note:** If the **Link** does not say **Yes**, click on the **Refresh** button until it displays **Yes**.

Also, if you have enabled encryption on your router, you will also need to set the identical encryption settings on the Print Server. For more information regarding how to set the encryption settings, please refer to the user's manual on the provided CD.

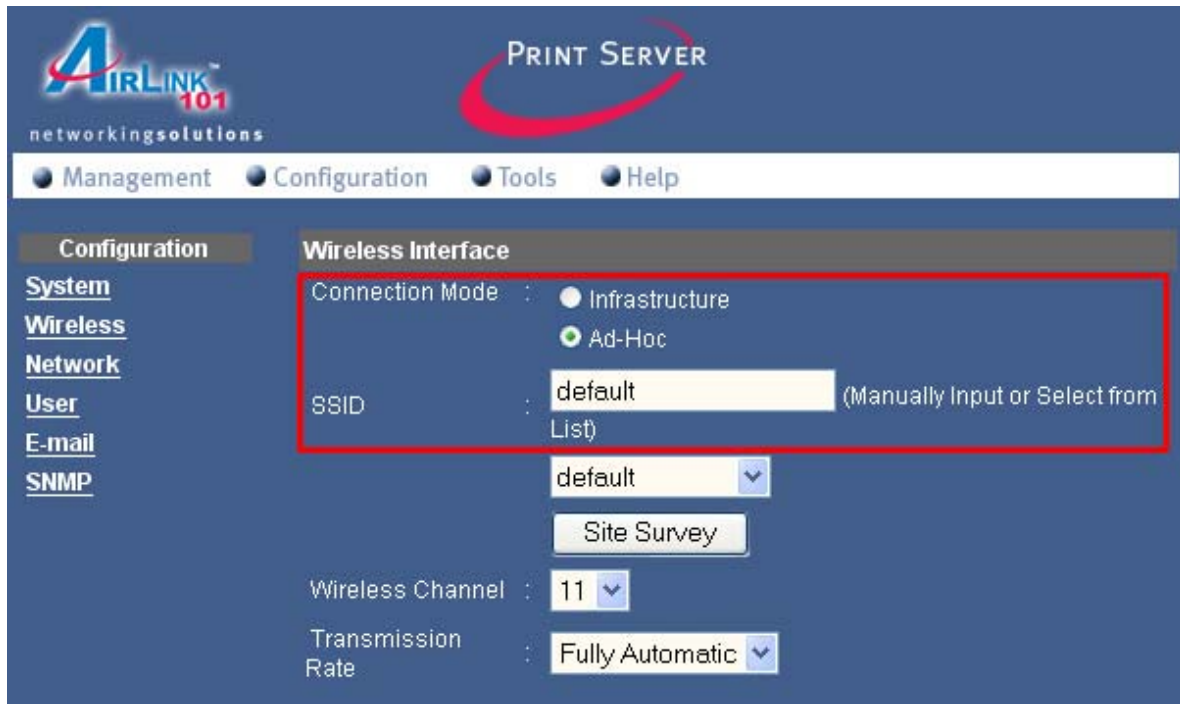
**Step 8** Verify your wireless connection with the steps outlined in **Section 4, Verifying Network Connection**.

**You have successfully configured the Print Server for wireless printing in Infrastructure mode.**

If you want to print directly to the Print Server (bypassing the wireless router), follow the steps below. You should use a wired connection to configure the following wireless settings before unplugging the network cable from the Print Server.

**Note:** Your wireless computer may lose Internet connection if you set it to print directly to the Print Server.

**Step 1** Go to **Configuration, Wireless**, and set the **Connection Mode** to **Ad-Hoc**.

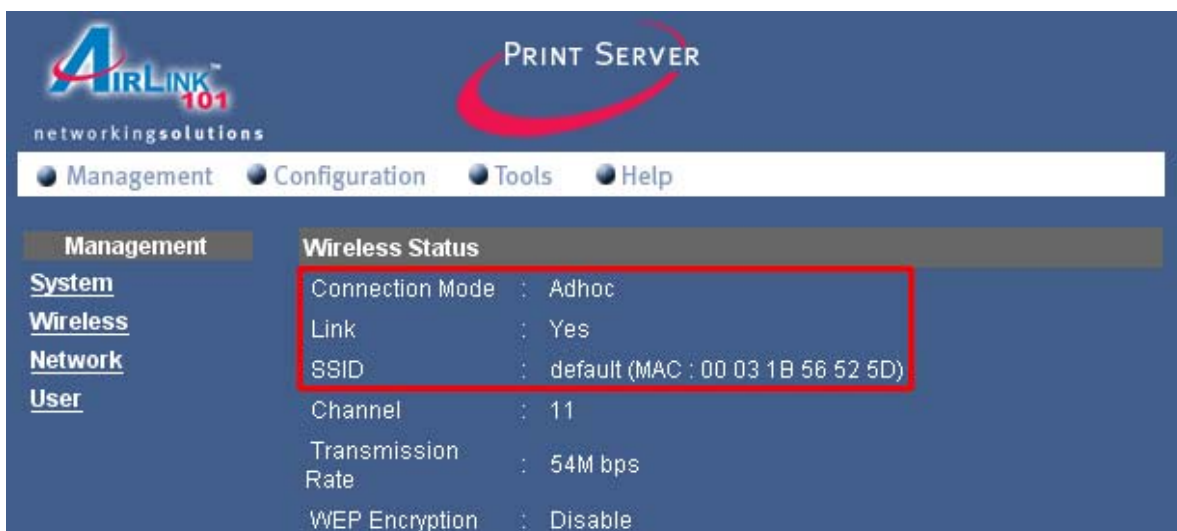


**Step 2** Rename the **SSID** of the Print Server or keep it as **default**.

**Step 3** Set the desired **Wireless Channel**.

**Step 4** Click **Save**.

**Step 5** Click on **Management** and go to **Wireless**. Verify that the **Connection Mode** is **Ad-Hoc** and the **Link** is **Yes**. Also verify that the SSID matches the SSID you have set.



**Note:** If the **Link** does not say **Yes**, click on the **Refresh** button until it displays **Yes**.

**Step 6** Manually change the TCP/IP setting of your wireless computer to use a static IP address and assign the appropriate **IP Address**, **Subnet Mask**, and **Default Gateway** according to your network. If you do not know how to do this, it is recommended that you do not print directly to the Print Server, but print through the wireless router instead.

**Step 7** Configure your wireless adapter to **Ad-Hoc** mode, using the same **SSID** and **Channel** number as the Print Server.

**Note:** If you have enabled encryption on your wireless network adapter, you will also need to set the identical encryption settings on the Print Server. For more information regarding how to set the encryption settings, please refer to the user's manual on the provided CD.

**You have successfully configured the Print Server for wireless printing in Ad-Hoc mode.**

**For more information on how to use the Web Configuration Utility or setup for Mac OS, please refer to the User's Manual in the provided CD.**

## Section 9

### Technical Support

E-mail: [support@airlink101.com](mailto:support@airlink101.com)

Toll Free: 1-888-746-3238

Web Site: [www.airlink101.com](http://www.airlink101.com)

