



3-Port Print Server

Model # APSUSB203

Quick Installation Guide

Section 1

Connecting the Print Server

Warning: Only a USB printer may be connected to the USB port of the Print Server. Connecting any other USB device to the Print Server may damage the Print Server.

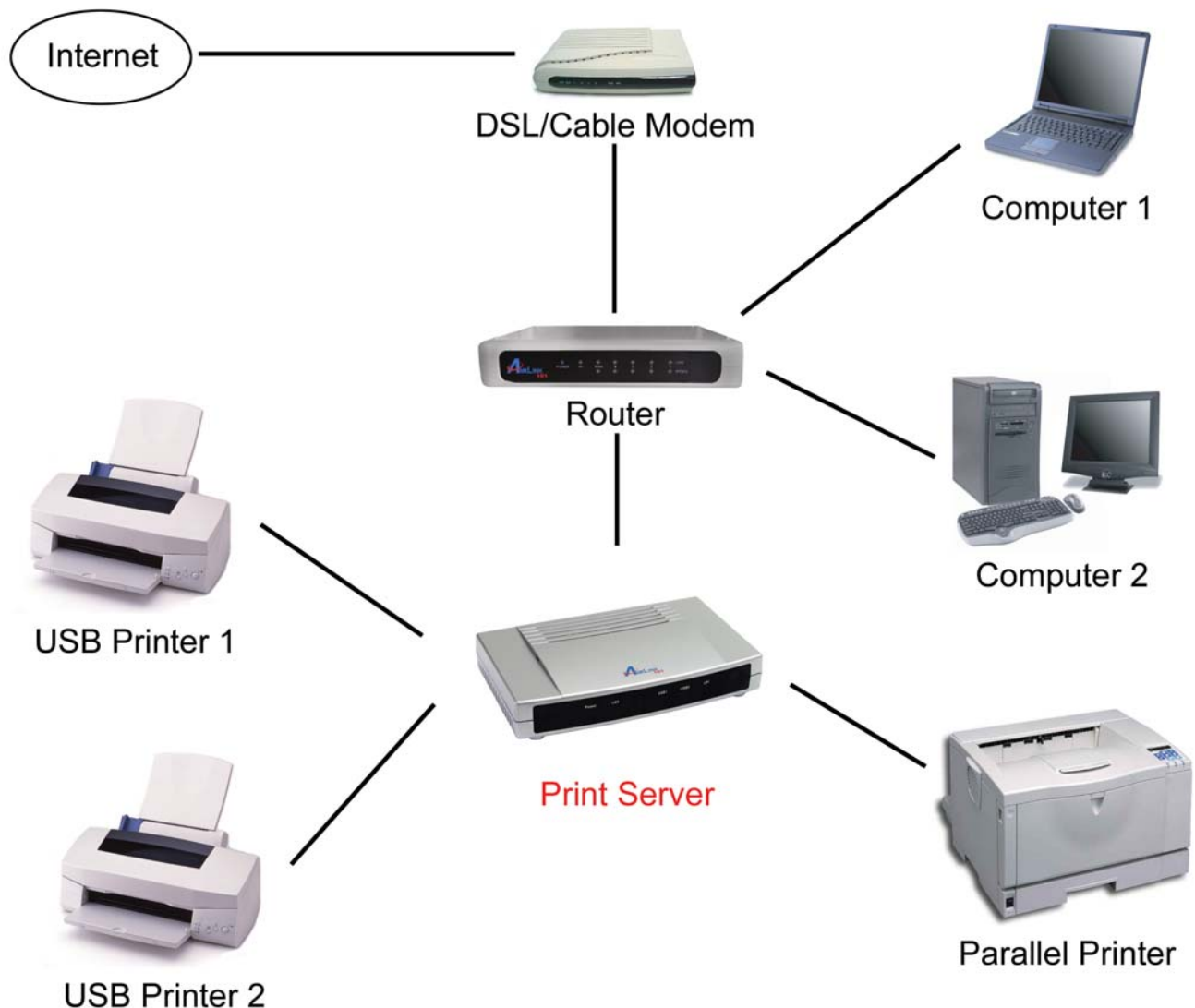
Note: Do not plug the power cord to the Print Server until you have reached **Step 4** of this section.

Step 1 Connect one end of the network cable to the **LAN** port of the Print Server and attach the other end of the cable to a router.

Step 2 Make sure all the printers are powered **OFF**, then connect one end of the printer cable to the printer port of the Print Server and attach the other end of the cable to the printer port of the printer.

Step 3 Power **ON** the printer(s).

Step 4 Plug one end of the power cord into the Print Server and the other end into an electrical outlet.

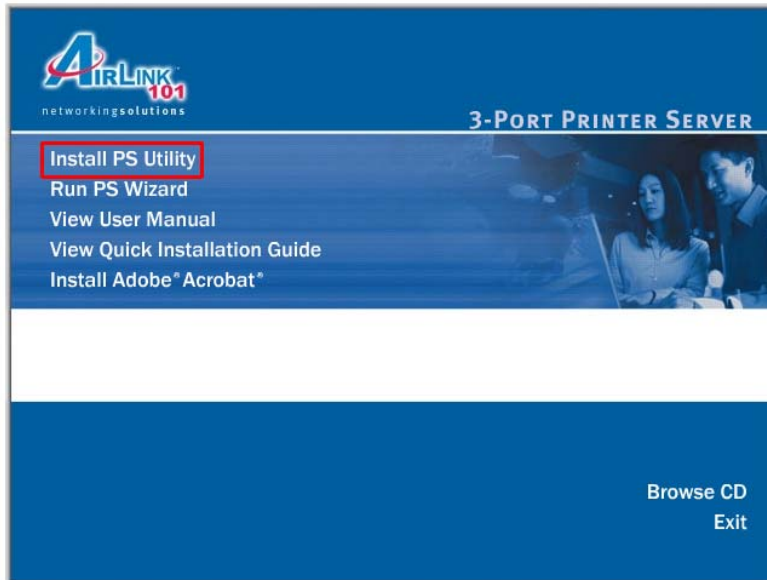


Section 2

Installing PS Utility

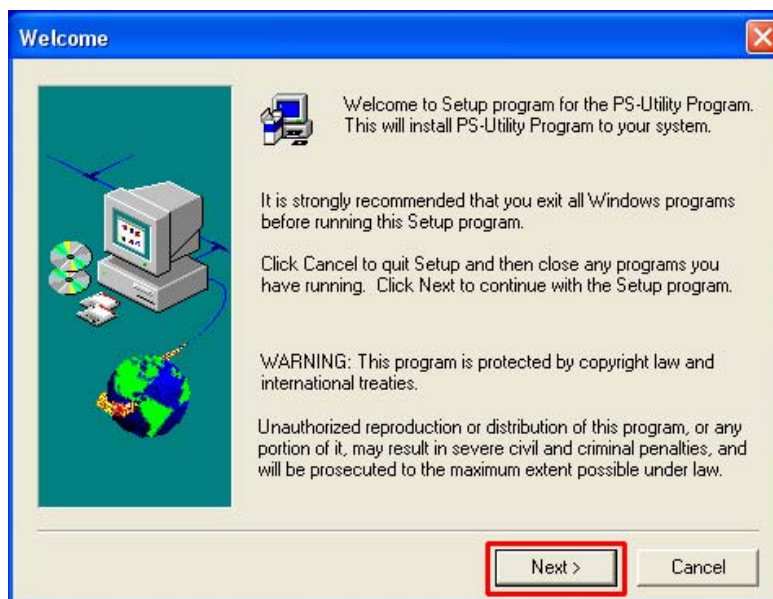
Step 1 Insert the provided CD and wait for the autorun screen to appear.

Step 2 Click on **Install PS Utility**.

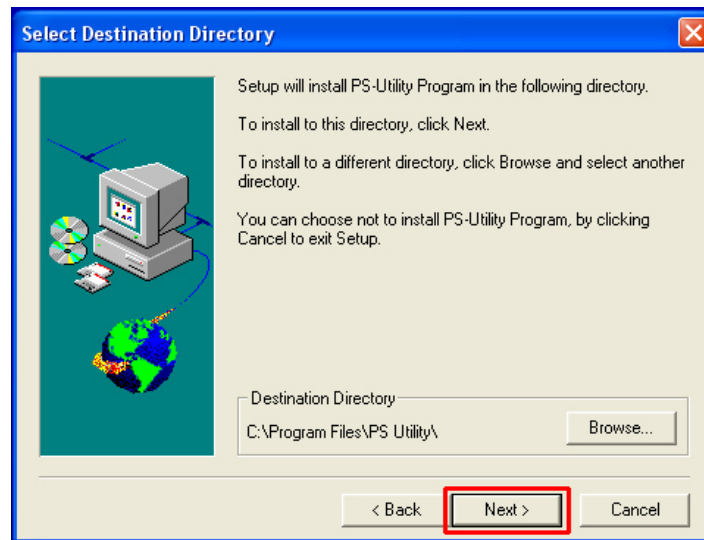


Note: If the autorun screen does not appear automatically, go to **Start, Run**, type **D:\autorun.exe** (where **D** is the letter of your CD drive) and click **OK**.

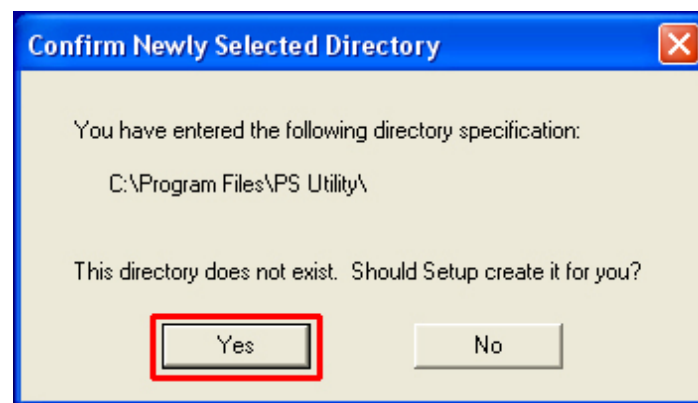
Step 3 Click **Next**.



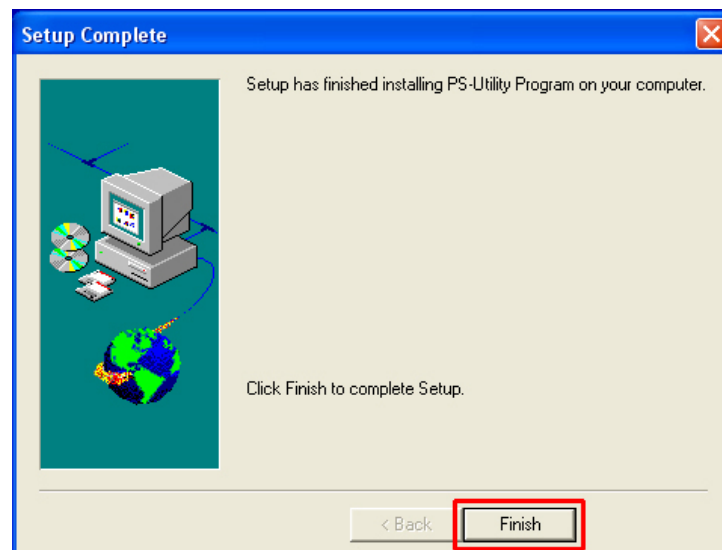
Step 4 Click **Next**.



Step 5 Click **Yes**.



Step 6 Click **Finish**.



Section 3

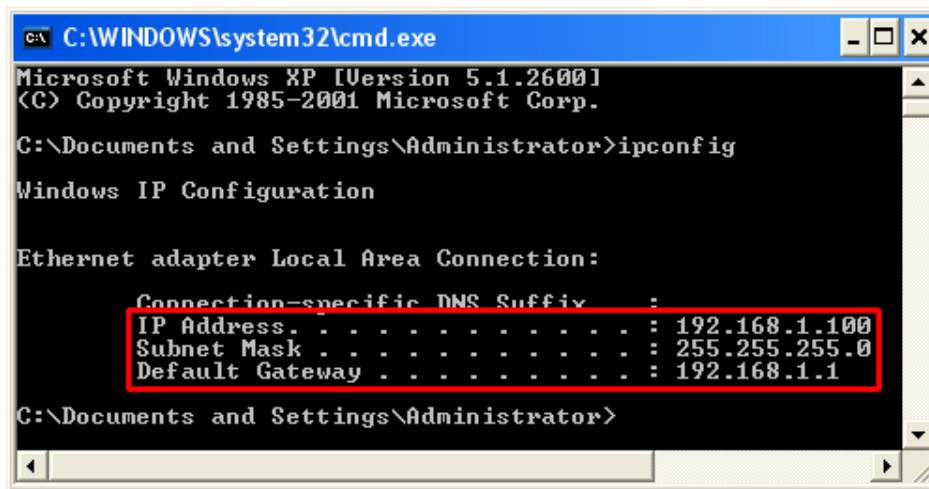
Configuring Network Setting

Before configuring the Print Server's network setting, please take note of your computer's TCP/IP setting.

Step 1 Click on **Start**, **Run**, and type **command** (for Windows 95/98/ME) or **cmd** (for Windows 2000/XP) and click **OK**.

Step 2 At the command prompt, type **ipconfig** and press **Enter**.

Step 3 Write down the information for the **IP Address**, **Subnet Mask**, and **Default Gateway**. You will need these information later.



```
C:\WINDOWS\system32\cmd.exe
Microsoft Windows XP [Version 5.1.2600]
(C) Copyright 1985-2001 Microsoft Corp.

C:\Documents and Settings\Administrator>ipconfig

Windows IP Configuration

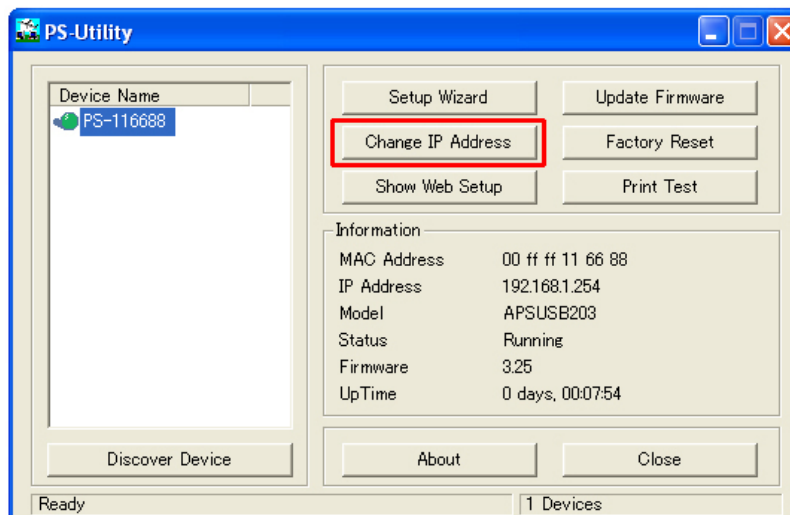
Ethernet adapter Local Area Connection:

    Connection-specific DNS Suffix  :
    IP Address . . . . . : 192.168.1.100
    Subnet Mask . . . . . : 255.255.255.0
    Default Gateway . . . . . : 192.168.1.1

C:\Documents and Settings\Administrator>
```

Step 4 Run the PS Utility by going to **Start**, **(All) Programs**, **PS-Utility**, **PS-Utility v3.00**.

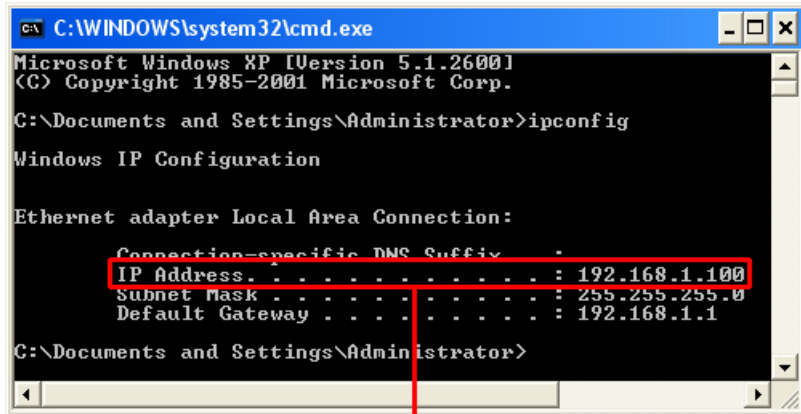
Step 5 Make sure the Print Server is listed under the **Device Name** and click on **Change IP Address**.



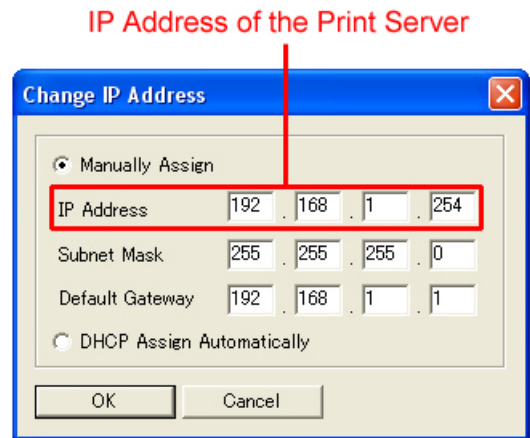
Step 6 In the **IP Address** field, enter a valid IP address, subnet mask, and default gateway that matches your local area network.

For example: If your computer's **IP Address** is **192.168.1.100**, enter the same three numbers: **192.168.1** in the corresponding fields.

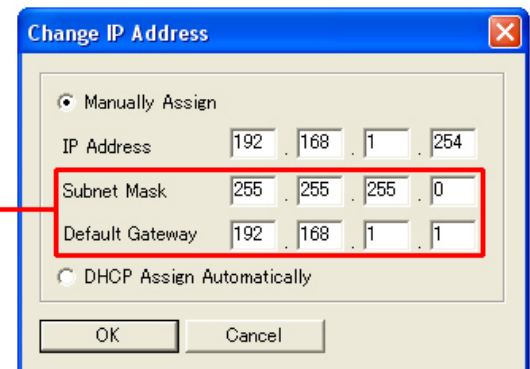
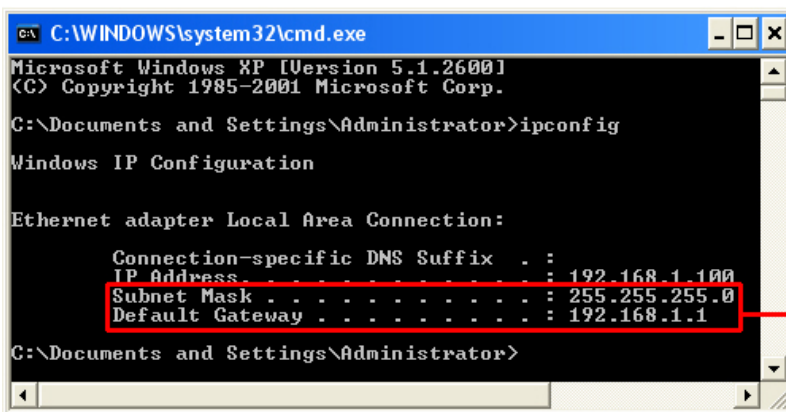
Note: You can leave the last IP Address number **254** as is unless another network device (i.e. the **Default Gateway**) is already using that number. If another network device is already using **254**, then change it to another number that is currently not in use (preferably **200 - 253**).



IP Address of your computer



Step 7 For the **Subnet Mask** and **Default Gateway** fields, enter the same number as the TCP/IP setting of your computer.



Step 8 Click **OK**.

Step 9 Close the PS Utility program.

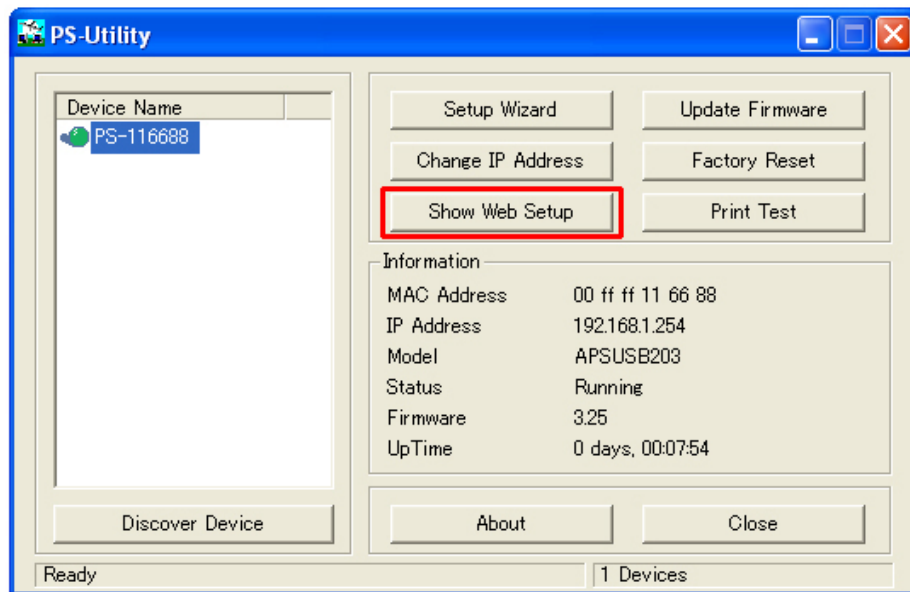
Section 4

Verifying Network Connection

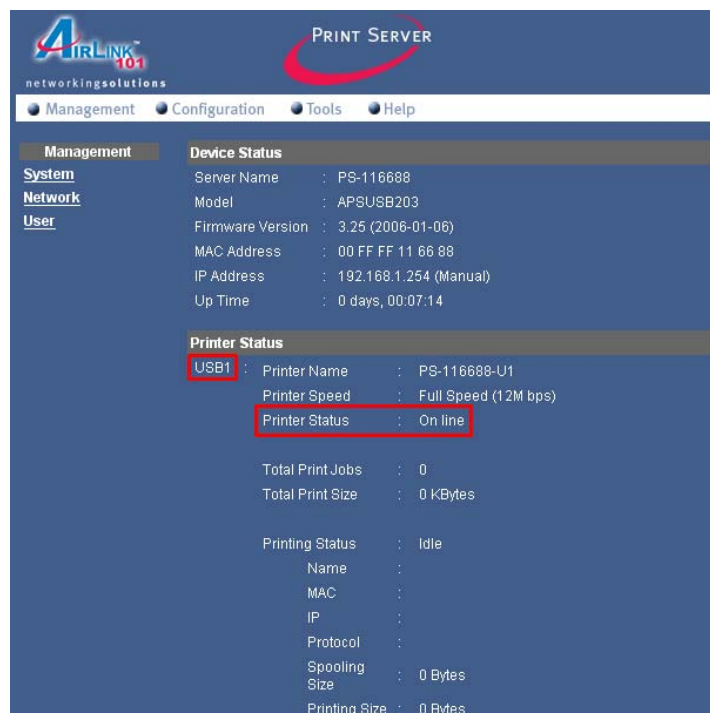
Step 1 Run the PS Utility by going to **Start, (All) Programs, PS-Utility, PS-Utility v3.00.**

Step 2 Make sure the Print Server is detected under the **Device Name.**

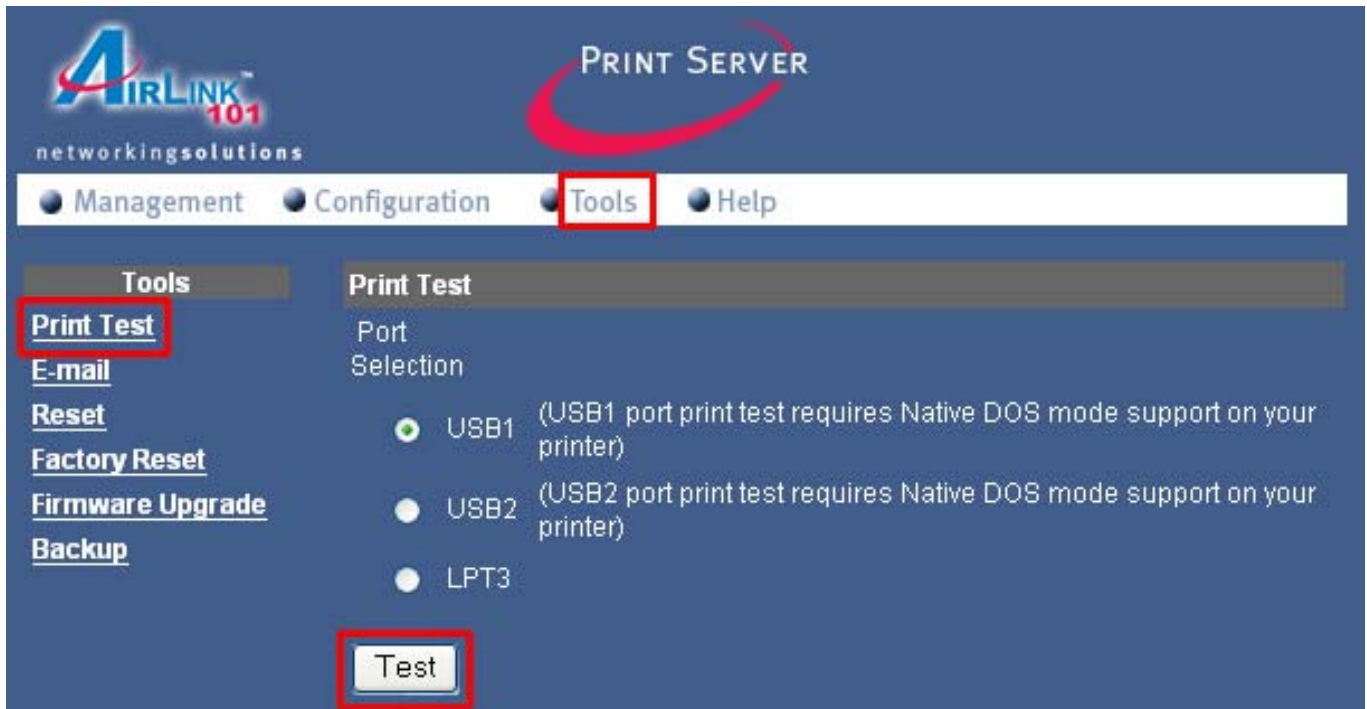
Step 3 Click on **Show Web Setup** to display the Print Server's **Web Configuration Utility.**



Step 4 Verify that the **Printer Status** for the connected ports display **On line.**



Step 5 Click on the **Tools** link, select the port you want to test and click the **Test** button. The Print Server will perform a low-level print test, bypassing the operating system layer.



Note: Your printer should print out a test page. If not, verify that the printer is powered on and all cables are securely connected and try again. If the printer still fails to print a test page, please check the printer compatibility list on our web site at www.airlink101.com for a list of compatible printers. If your printer is not on the list, it may not be compatible with the Print Server.

Step 6 Once the printer successfully prints out a test page, you may close the web browser and proceed to the next section.

Section 5

Running PS Wizard

Warning: Make sure you have installed the printer driver locally on every computer that will use the Print Server in your network before running the PS Wizard. Otherwise, the PS Wizard will not run properly. Be sure to run the PS Wizard on all the computers that will use the Print Server in your network.

Step 1 Insert the provided CD and wait for the autorun screen to appear.

Step 2 Click on **Run PS Wizard**.

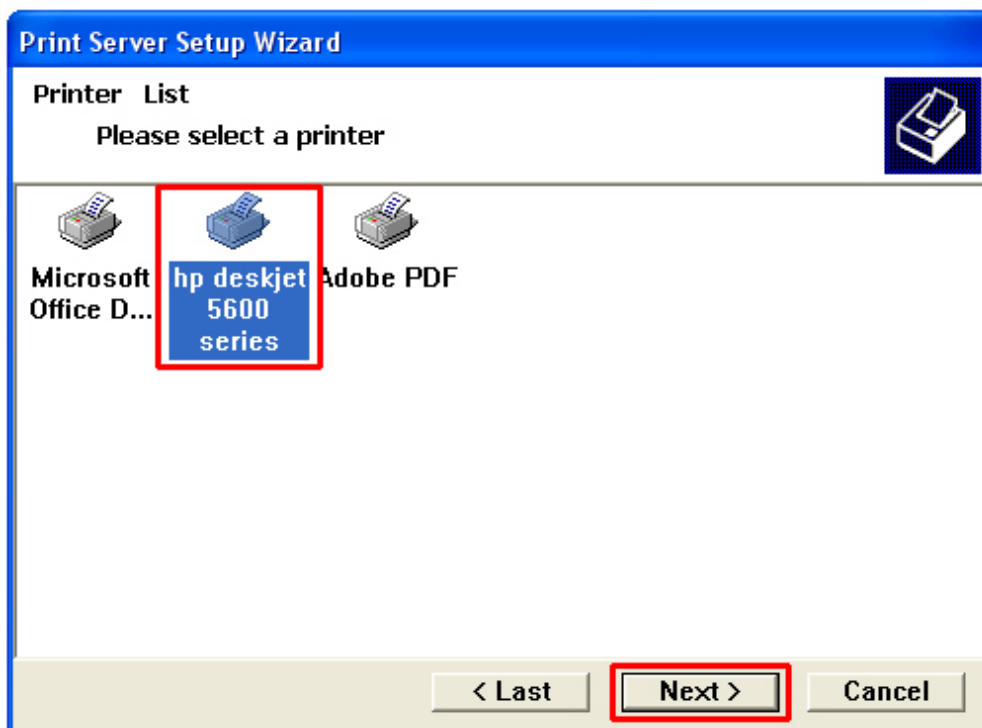


Note: If the autorun screen does not appear automatically, go to **Start, Run**, type **D:\autorun.exe** (where **D** is the letter of your CD drive) and click **OK**.

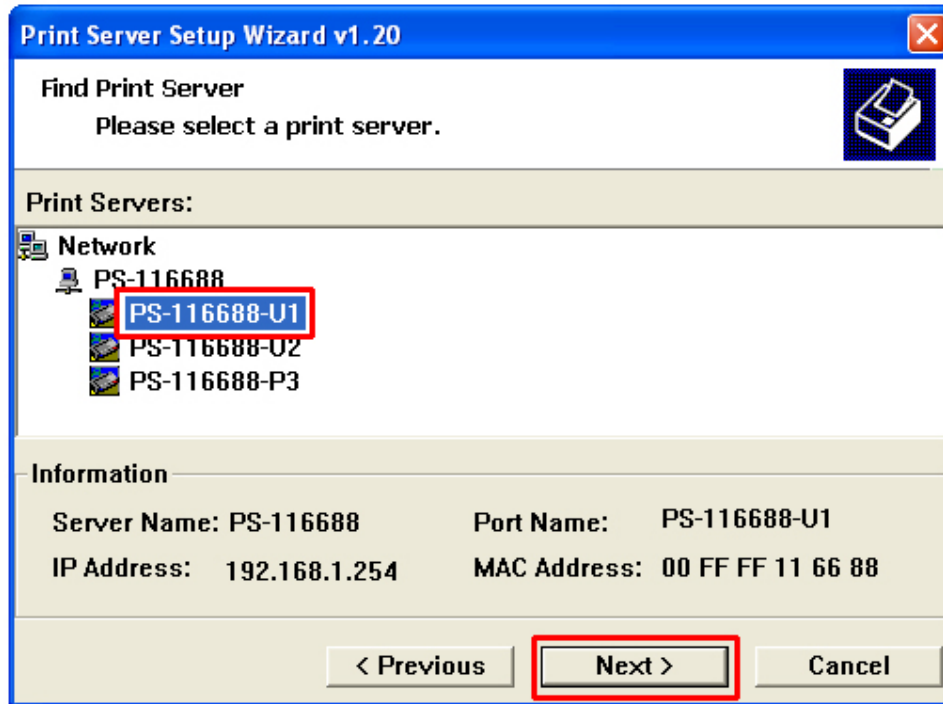
Step 3 Click **Next**.



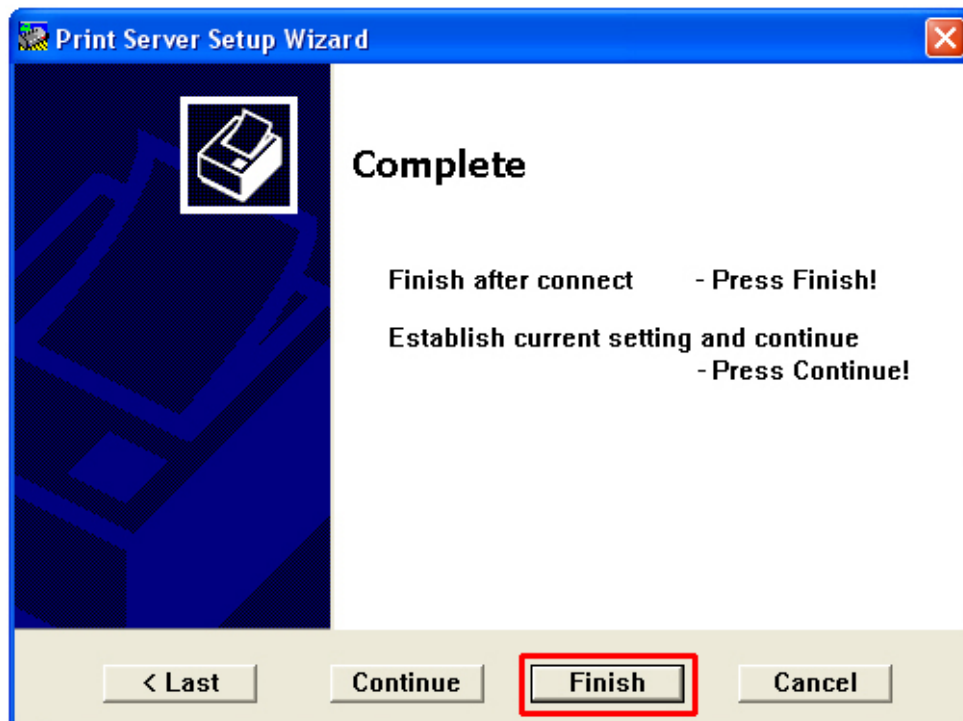
Step 4 Select the printer that is connected to the print server and click **Next**.



Step 5 Double-click on the **Print Server**, select the **Printer Port** that the printer is connected to and click **Next**.



Step 6 Click **Finish** and **OK**. (For Windows 95/98/ME, you'll need to reboot the computer).



Step 7 Re-run the **PS Wizard** and setup any remaining printer(s) that are connected to the print server.

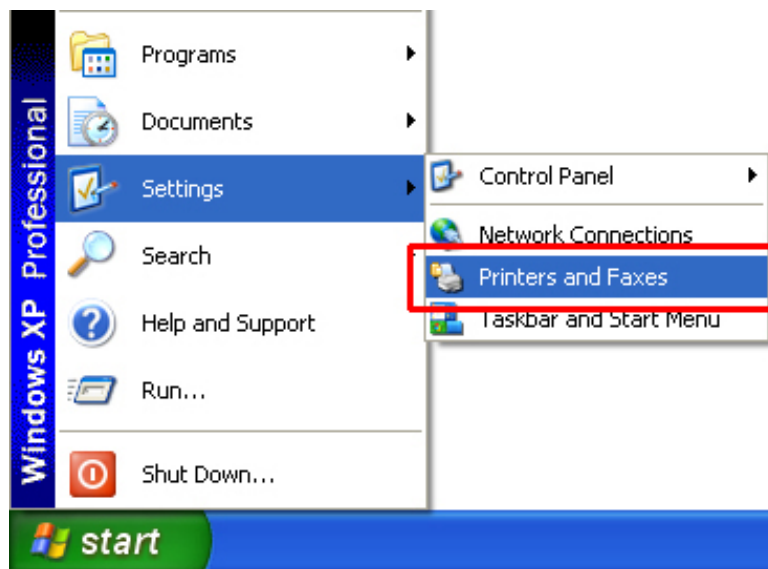
Step 8 Run the **PS Wizard** on all the computers in your network that will use the print server.

Section 6

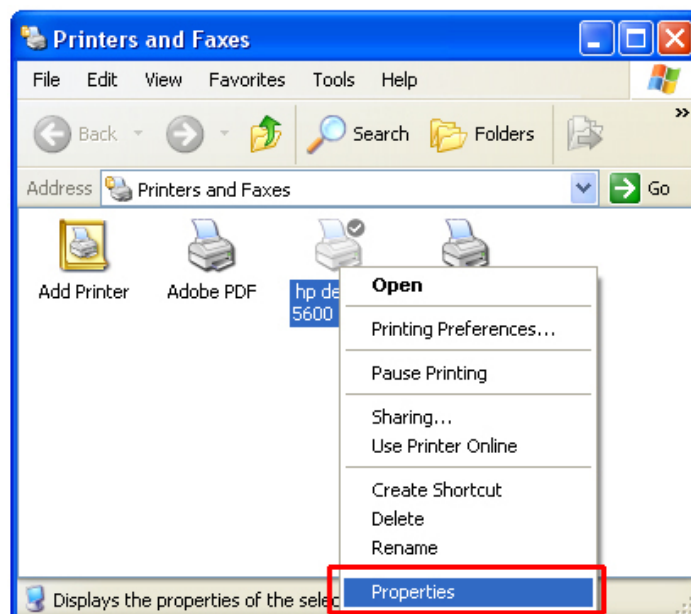
Performing Operating System Print Test

The final step in setting up the Print Server is to perform an operating system print test. Please note that the instructions below are for Windows XP, but the steps are similar for all the other Windows operating systems.

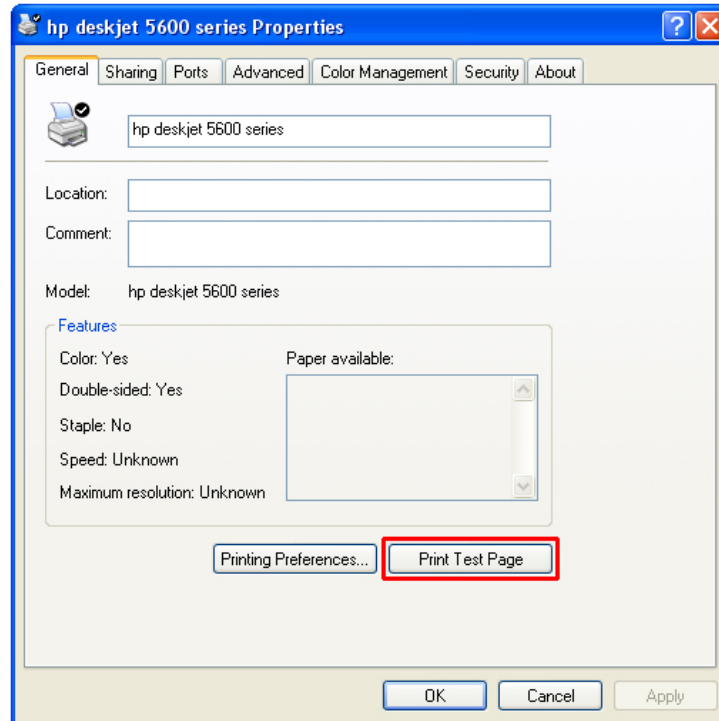
Step 1 Click on **Start, Settings, Printers and Faxes.**



Step 2 Right-click on the printer that is connected to the Print Server and select **Properties.**



Step 3 Click on the **Print Test Page** button. Windows should print out a test page.



You have successfully configured the Print Server for printing.

For more information on how to use the Web Configuration Utility or setup for Mac OS, please refer to the User's Manual in the provided CD.

Section 7

Technical Support

E-mail: support@airlink101.com

Toll Free: 1-888-746-3238

Web Site: www.airlink101.com

