



Quick Installation Guide

Model # AWLH4030



- Package Content:**
- PCI Wireless Adapter
 - Driver & Utility CD
 - Quick Installation Guide

Section 1

Install Utility Software

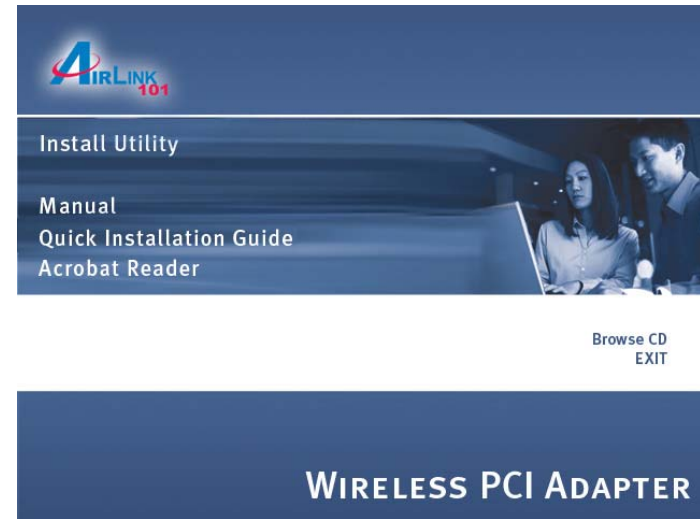
Note: Be sure to power off your computer before inserting the PCI adapter.

Step 1 Insert the PCI adapter into an available PCI slot and turn on your computer.

Step 2 Windows will detect the adapter and request for a driver. Click **Cancel** to quit the wizard. Insert the Driver & Utility CD into your CD drive and wait for the autorun page to appear on screen.

Step 3 Click on **Install Utility** at the autorun page.

Note: If the autorun page doesn't appear automatically, go to **Start, Run,** and type **D:\autorun.exe** (where **D** is the letter of your CD drive) and click **OK**.

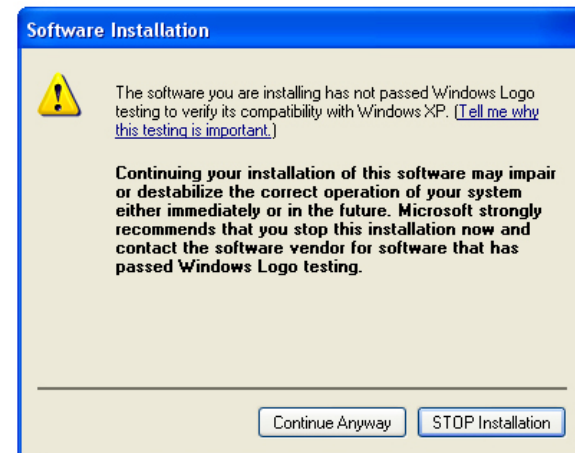


Step 4 Click **Next** at the welcome screen.

Step 5 Click **Next** to accept the default destination folder to install the software or click **Browse** to manually select a different destination folder.

Step 6 Click **Next** at the Select Program Folder screen.

Step 7 Click **Continue Anyway** at the Windows Logo Screen (if prompted).



Step 8 Verify **“Yes, I want to restart my computer now”** is selected and click **Finish** to restart your computer.

Section 2

Install Driver

Note: After restarting the computer, Windows will launch the **Found New Hardware Wizard**. The Found New Hardware Wizard will look different depending on your operating system. Follow the on-screen instructions to complete the installation.

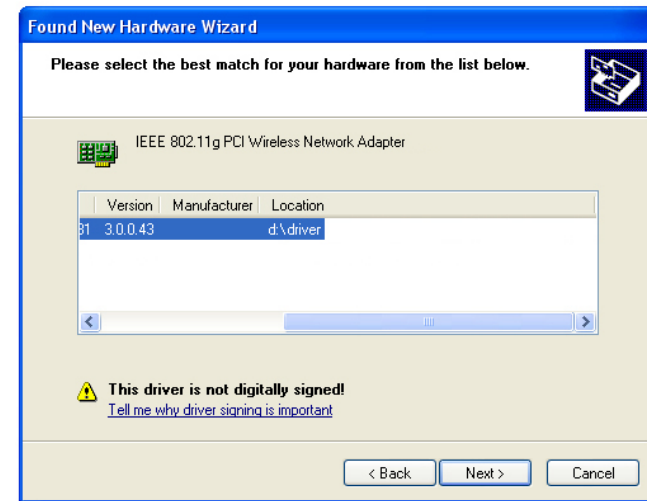
For Windows 98SE and ME users, you may be prompted to insert the Windows 98SE or ME CD during the driver installation. Be sure to have your Windows 98SE or ME CD ready.

Step 1 Select **Install the software automatically** and click **Next**.



For Windows 98SE and ME, select “**Search for the best driver for your device**” and click **Next**. Verify all the check boxes are unchecked except for “**Specify a location**” and click **Browse**.

Step 2 Select the driver from the “**Driver**” folder and click **Next**.



For Windows 98SE and ME, browse to **D:\Driver** folder (where **D** is the letter of your CD drive) and click **OK** then **Next**. Insert the Windows 98SE or ME CD if you are prompted to do so.

Step 3 Click **Continue Anyway** at the Windows Logo Screen (if prompted).



Step 4 Click **Finish**. Restart the computer if you are prompted to do so.

Continue on Back



Section 3

Configure the PCI Adapter

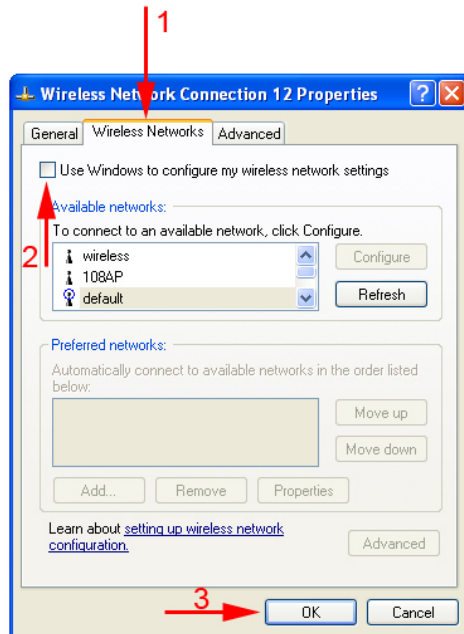
Note to Windows XP Users:

You must disable the Wireless Zero Configuration Utility in order to use the WLAN Monitor. Please refer to the following steps to disable the Wireless Zero Configuration Utility.

Step 1 Double-click on the **Wireless Network Connection Icon** in the system tray, then click on **Properties** or **Advanced**.



Step 2 Go to the **Wireless Networks** tab, uncheck the “**Use Windows to configure my wireless network settings**” check box and click **OK**. If the **Wireless Networks** tab does not appear, skip this step.



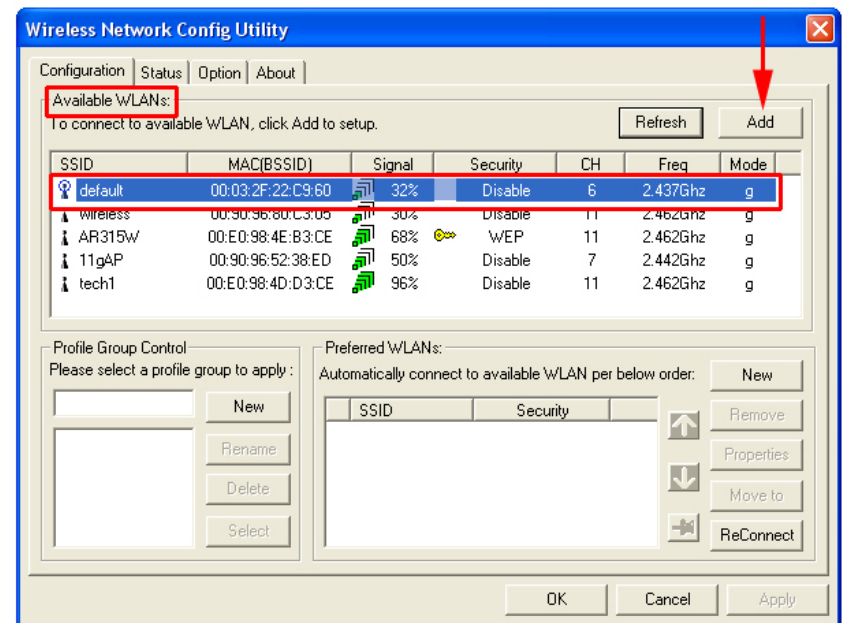
Step 3 To open the PCI Adapter’s utility, double-click on the WLAN Monitor Icon in the system tray.



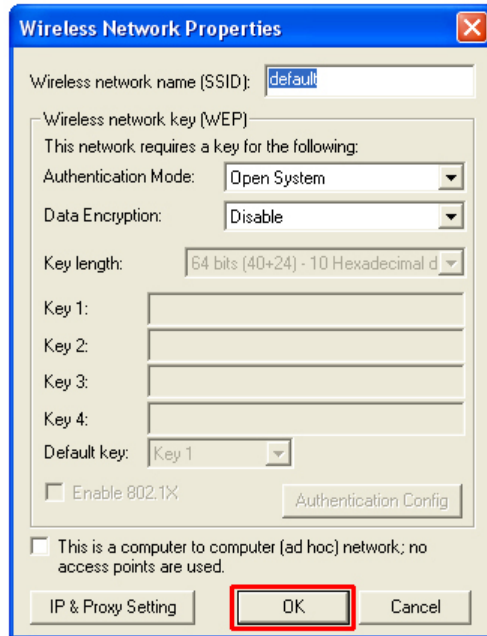
The utility automatically adds an available wireless network to the **Preferred WLANs** box. If no SSID is added, or if the SSID is wrong, please refer to the following steps to join the appropriate wireless network. Otherwise, skip to step 8.

Note: Be sure to remove the wrong SSID from the **Preferred WLANs** box before adding any new SSID. You can remove the wrong SSID by selecting it and clicking on **Remove**.

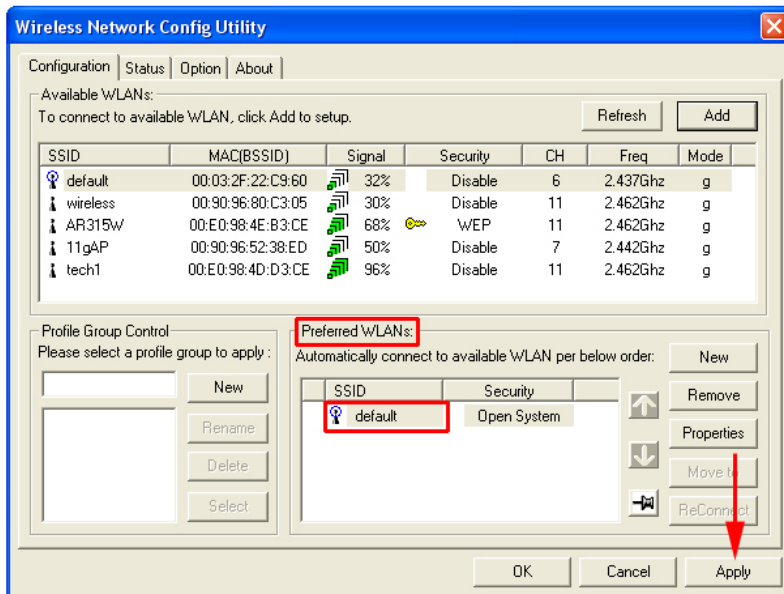
Step 4 Select the SSID of the wireless network you wish to connect to from the **Available WLANs** box and click **Add**.



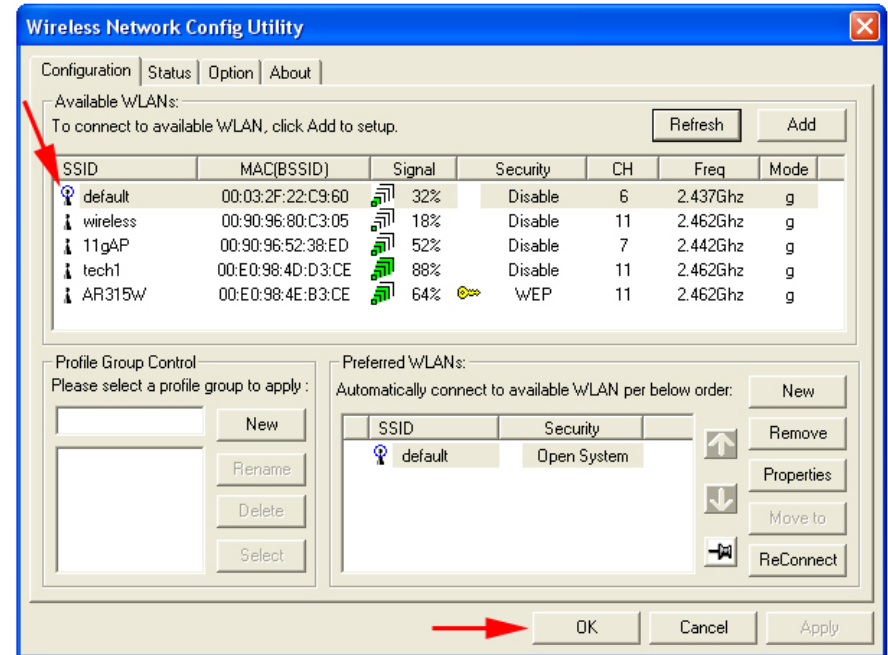
Step 5 Verify all the settings are correct and click **OK**.



Step 6 Verify the SSID you have selected is in the **Preferred WLANs** box and click **Apply**.



Step 7 A blue circle will surround the SSID you have chosen. Click **OK**.



Step 8 Restart your computer to complete the wireless network connection.

For more advanced features and additional details, please refer to the User's Manual on the provided CD.

Section 4

Technical Support

E-mail: support@airlink101.com

Toll Free: 1-888-746-3238

Web Site: www.airlink101.com