



Quick Installation Guide

Super G Wireless PCI Adapter

Model #AWLH4030



- Package Content:**
- Wireless PCI Adapter
 - Driver & Utility CD
 - Quick Installation Guide

Section 1

Install Utility Software

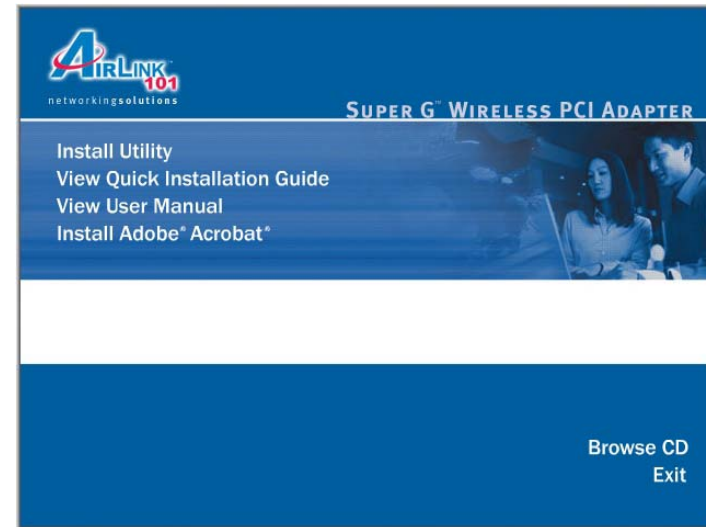
This Quick Installation Guide only provides the basic instructions. For more advanced features such as configuring encryption settings, please refer to the User's Manual in the provided CD.

Note: DO NOT insert the Wireless PCI Adapter into the computer until the appointed step; otherwise, the Adapter may not be installed successfully.

Step 1 Insert the Driver & Utility CD into your CD drive and wait for the autorun screen to appear.

Step 2 Click on **Install Utility** at the autorun screen.

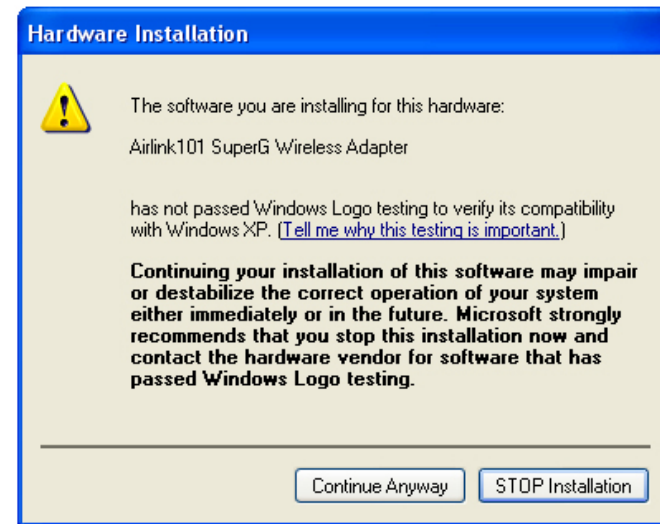
Note: If the autorun screen doesn't appear automatically go to **Start, Run**, and type **D:\autorun.exe** (where **D** is the letter of your CD drive) and click **OK**.



Step 3 Click **Next** at the welcome screen.

Step 4 Click **Next** to accept the default destination folder.

Step 5 Click **Continue Anyway** at the Windows Logo Screen. (For Windows 2000, click **Yes** at the Digital Signature Not Found prompt).



Step 6 Click **Finish** and **turn off** your computer.

Section 2

Install Driver

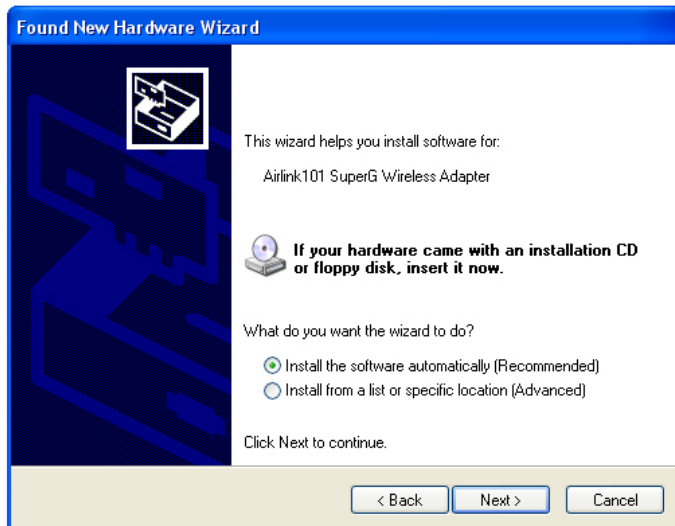
Note: After turning on the computer, Windows will launch the **Found New Hardware Wizard**. The Found New Hardware Wizard appears differently depending on your operating system. Follow the on-screen instructions to complete the installation.

For Windows 98SE and ME users, you may be prompted to insert the Windows 98SE or ME CD during the driver installation. Be sure to have your Windows 98SE or ME CD ready.

Step 1 Insert the Wireless PCI Adapter into an available PCI slot and turn on your computer.

Step 2 If Windows asks to connect to Windows Update to search for a driver, select **No, not this time** and click **Next**.

Step 3 Select **Install the software automatically** and click **Next**.



For Windows 98SE and ME, select **“Search for the best driver for your device”** and click **Next**. Verify all the check boxes are checked and click **Next**.

Step 4 Click **Continue Anyway** at the Windows Logo Screen. (For Windows 2000, click **Yes** at the Digital Signature Not Found prompt).



Step 5 Click **Finish** and restart your computer.



Continue on Back



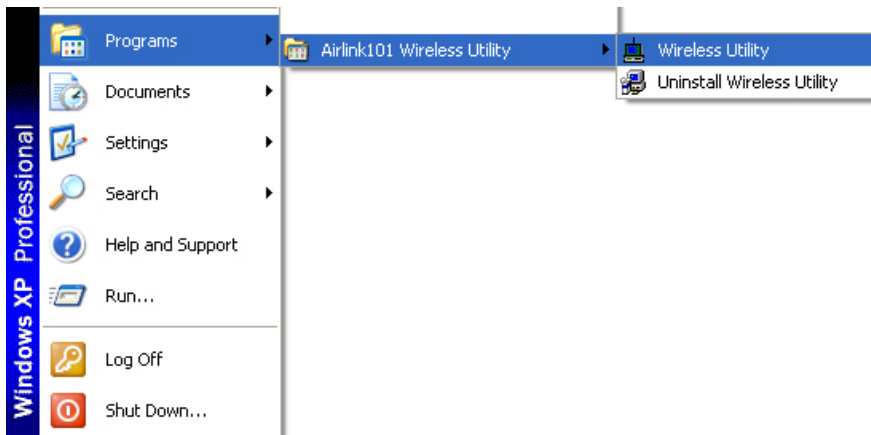
Section 3

Configure the Wireless PCI Adapter

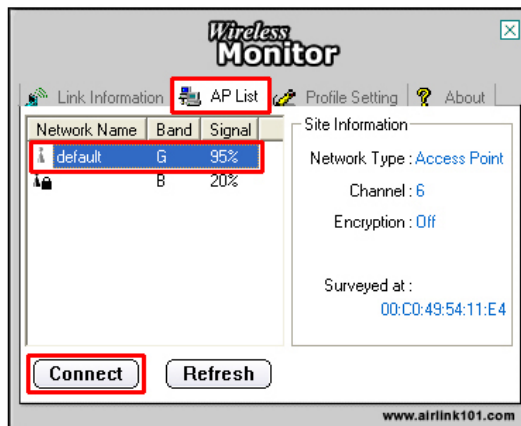
Note to Windows XP Users:

You must disable the Wireless Zero Configuration Utility in order to use the Wireless Utility. Please refer to the User's Manual in the provided CD for further instructions.

To open the Wireless PCI Adapter's utility go to **Start > (All) Programs > Airlink101 Wireless Utility > Wireless Utility**.



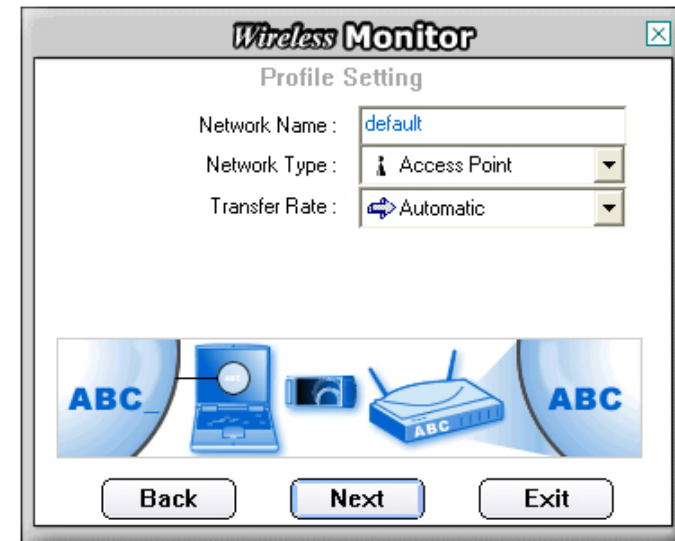
Step 1 Go to the **AP List** tab, select the **SSID** (Network Name) of the wireless network you wish to connect to, and click **Connect**.



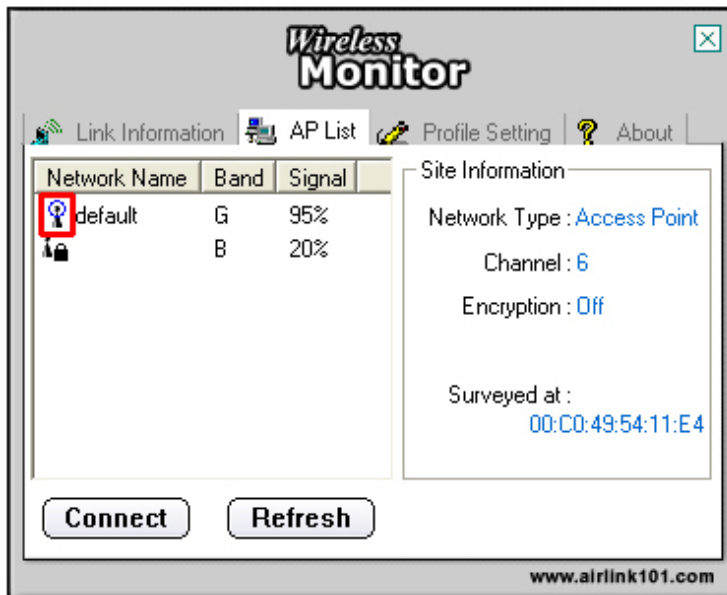
Step 2 Enter a **profile name** for your wireless setting and click **Next**.



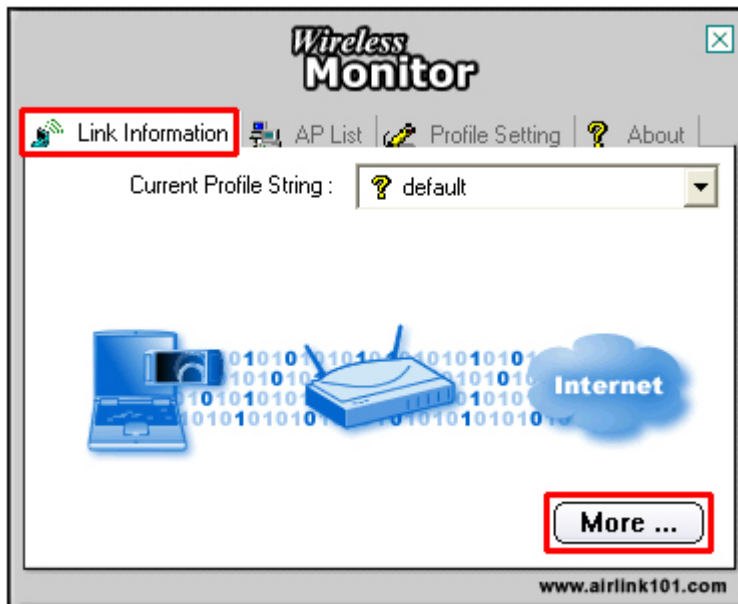
Step 3 Verify that the **Network Name** matches the **SSID** of your wireless network and click **Next**.



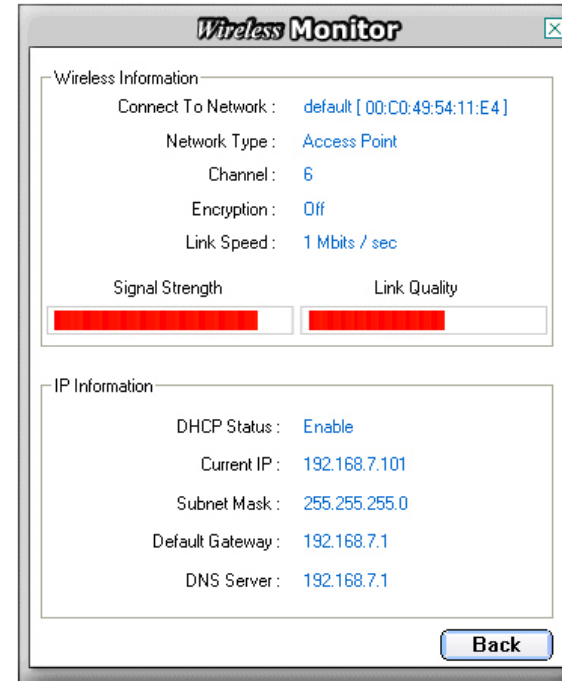
Step 4 You should see a blue circle around the antenna icon indicating a valid connection.



Step 5 Go to the **Link Information** tab and click on the **More** button.



Step 6 Verify that you are receiving adequate Signal Strength and Link Quality and that you have been assigned a valid IP address (instead of all 0's).



Section 4

Technical Support

E-mail: support@airlink101.com

Toll Free: 1-888-746-3238

Web Site: www.airlink101.com

*Super G™ technology (108 Mbps) can only be obtained when using products with Atheros Super G™ chipset

*Theoretical maximum wireless signal rate based on IEEE standard 802.11g specifications. Actual data throughput will vary. Network conditions and environmental factors, including volume of network traffic, building materials and construction, mix of wireless products used, radio frequency interference (e.g., cordless telephones and microwaves) as well as network overhead lower actual data throughput rate.

Copyright © 2005 AirLink101. All rights reserved. AirLink101, the stylized AirLink101 logo, specific product designations, and all other words and logos that are identified as trademarks and/or service marks are, unless noted otherwise, the trademarks and service marks of AirLink101. All other product or service names are the property of their respective holders. AirLink101 products are protected under numerous U.S. and foreign patents and pending applications, mask work rights, and copyrights.