



Step 3 Click **Install Driver (Windows 2000/XP)**.

Quick Installation Guide

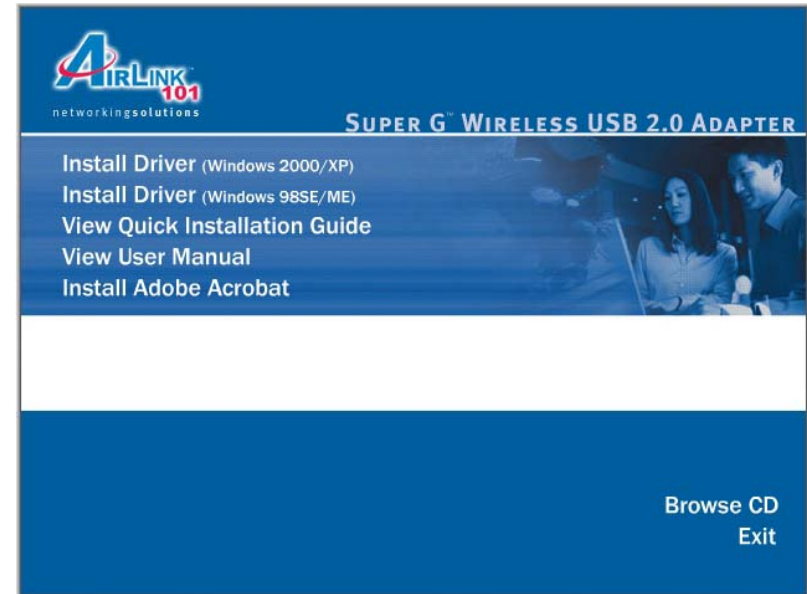
Super G Wireless USB 2.0 Adapter

Model # AWLL4030



Package Contents:

- Super G USB 2.0 Adapter
- USB 2.0 Extension Cable
- Installation CD
- Quick Installation Guide



Section 1

Step 4 Click **Next** at the welcome screen.

Installation

The following steps are for Windows 2000/XP. Please refer to the User's Manual on the provided CD for Windows 98SE/ME.

For Windows 2000/XP, you must update your USB driver to USB 2.0

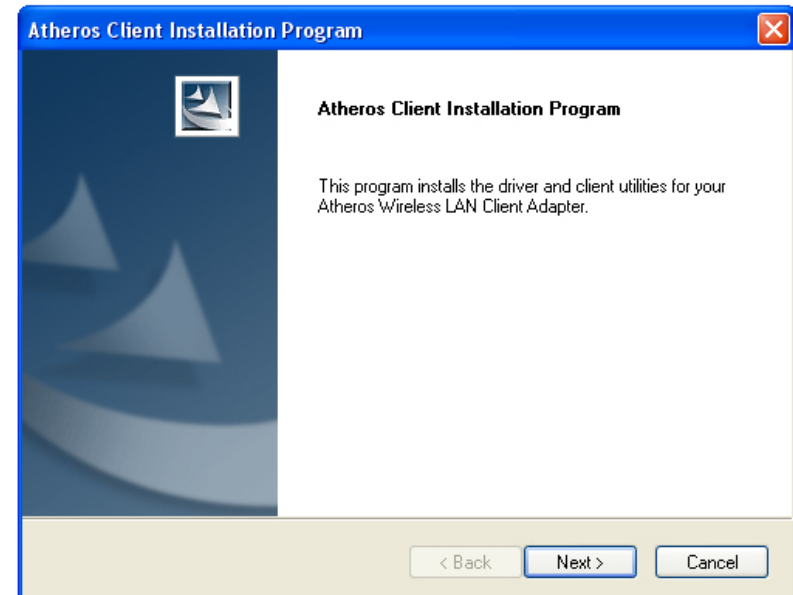
For Windows XP you must install Service Pack 2 prior to installing the USB Adapter.

Note: Whenever the Found New Hardware Wizard appears, click **Cancel** to quit the wizard and continue with the installation.

Step 1 Insert the Wireless USB Adapter to the computer's USB port.

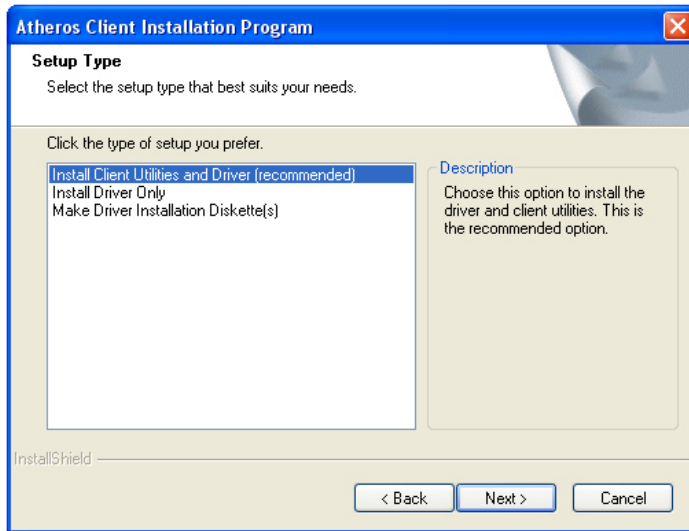
Step 2 Insert the Installation CD into the CD drive and wait for the autorun screen to appear.

Note: If the autorun screen doesn't appear automatically go to **Start, Run**, and type **D:\autorun.exe** (where **D** is the letter of your CD drive) and click **OK**.



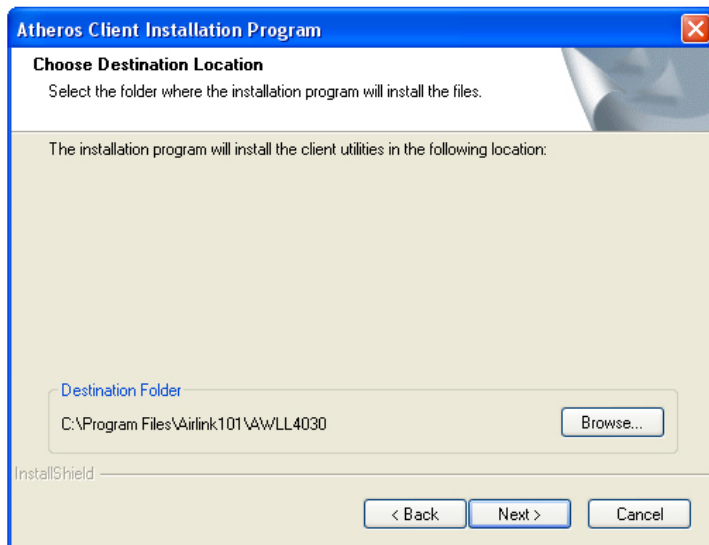
Step 5 Click **Next** to accept the License Agreement.

Step 6 Verify **Install Client Utilities and Driver** is selected and click **Next**.

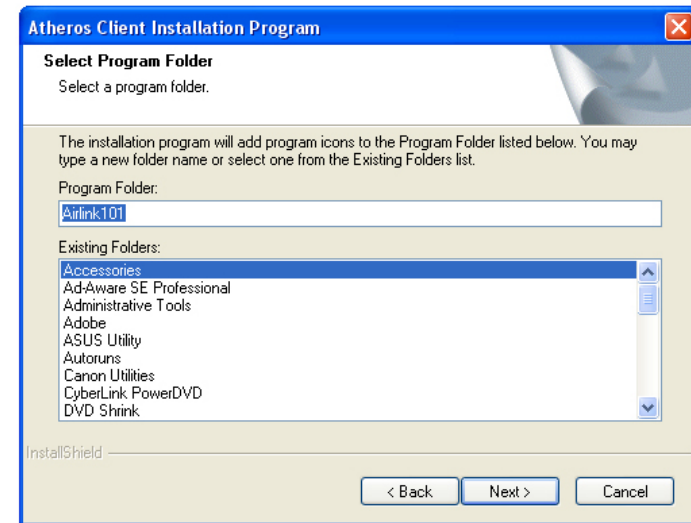


Step 7 Click **Yes** to acknowledge the need for a reboot after the installation.

Step 8 Click **Next** to accept the default Destination Folder.



Step 9 Click **Next** to accept the default Program Folder.



Step 10 Read the notes carefully and click **Next**.

Step 11 Verify **Atheros Client Utility and Supplicant** is selected and click **Next**.

Step 12 Click **OK** to acknowledge the prompt.



Continue on Back



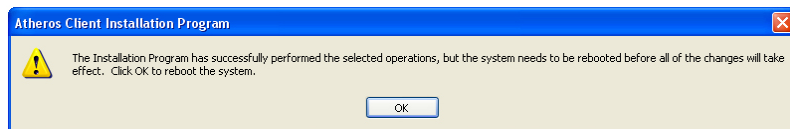
Step 13 Click **Continue Anyway** at the Windows Logo prompt for the Bootloader Download. (Click **Yes** for Windows 2000).



Step 14 Click **Continue Anyway** at the Windows Logo prompt for the Wireless Network Adapter (Click **Yes** for Windows 2000).



Step 15 Click **OK** to reboot your computer.



Section 2

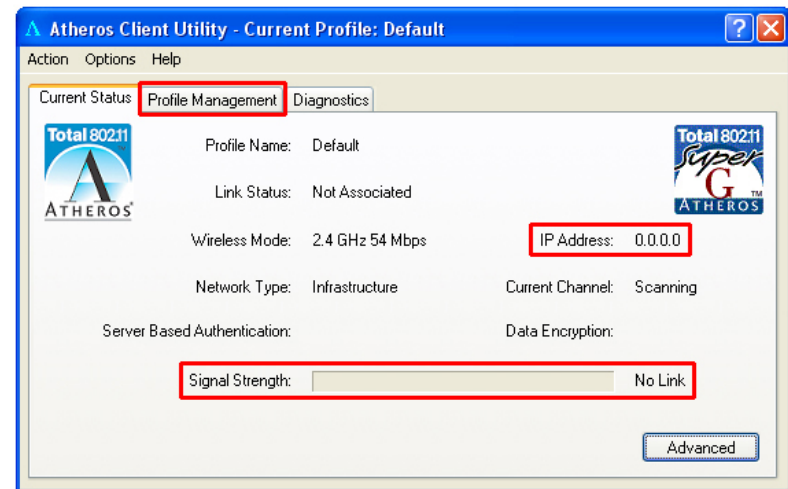
Configure USB Adapter

The following steps are for Windows 98SE/ME/2000/XP.

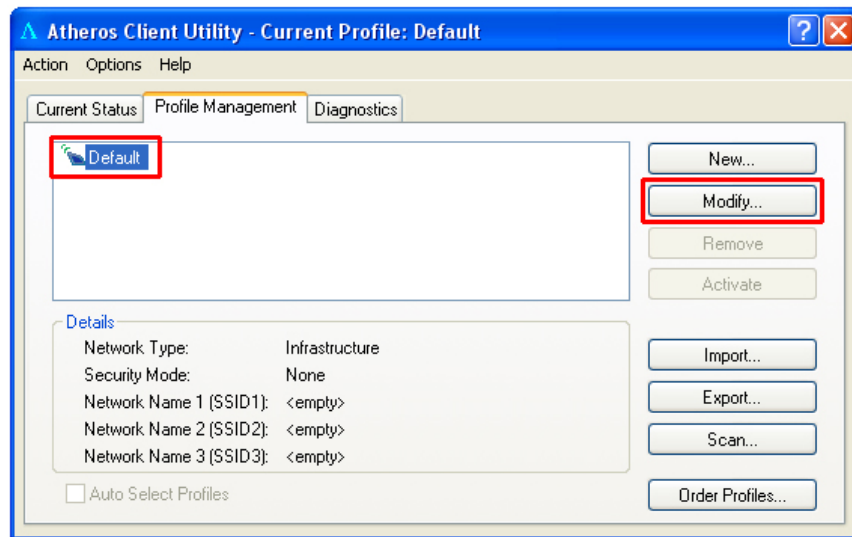
If you already have signal strength and valid IP address, you do not need to perform the following steps.

Step 1 Start the **Atheros Client Utility** by double-clicking on it from your desktop.

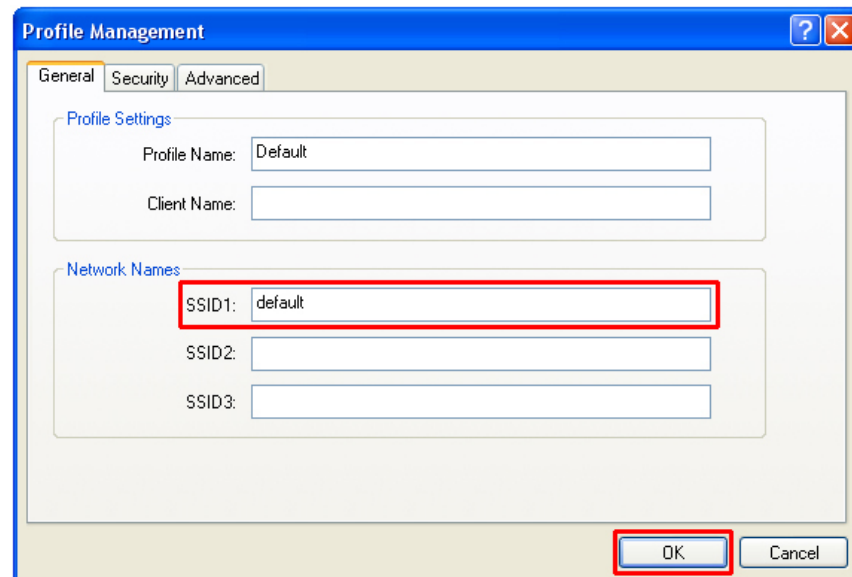
Step 2 If there is no Signal Strength and/or the IP Address is all 0's, select the **Profile Management** tab.



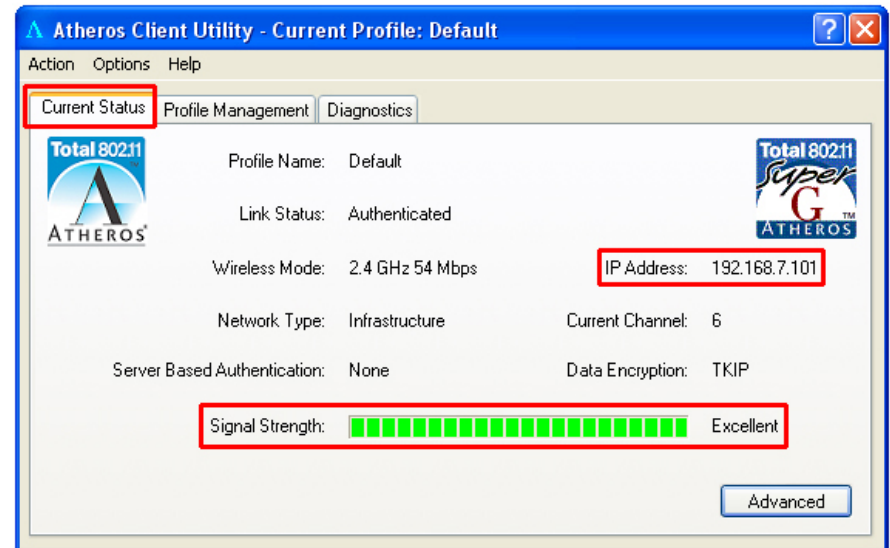
Step 3 Select the **Default** profile and click **Modify**.



Step 4 Enter the **SSID** (Network Name) that your wireless router/access point is using in the SSID field and click **OK**.



Step 5 Return to the **Current Status** tab and verify that you have signal strength and valid IP address.



If your wireless router/access point has encryption enabled, you'll need to apply the same encryption settings to the Adapter as well. For information on how to configure encryption, please refer to the User's Manual in the supplied Installation CD.

Section 3

Technical Support

E-mail: support@airlink101.com

Toll Free: 1-888-746-3238

Web Site: www.airlink101.com

*Theoretical maximum wireless signal rate based on IEEE standard 802.11g specifications. Actual data throughput will vary. Network conditions and environmental factors, including volume of network traffic, building materials and construction, mix of wireless products used, radio frequency interference (e.g., cordless telephones and microwaves) as well as network overhead lower actual data throughput rate.

Copyright © 2005 AirLink101. All rights reserved. AirLink101, the stylized AirLink101 logo, specific product designations, and all other words and logos that are identified as trademarks and/or service marks are, unless noted otherwise, the trademarks and service marks of AirLink101. All other product or service names are the property of their respective holders. AirLink101 products are protected under numerous U.S. and foreign patents and pending applications, mask work rights, and copyrights.