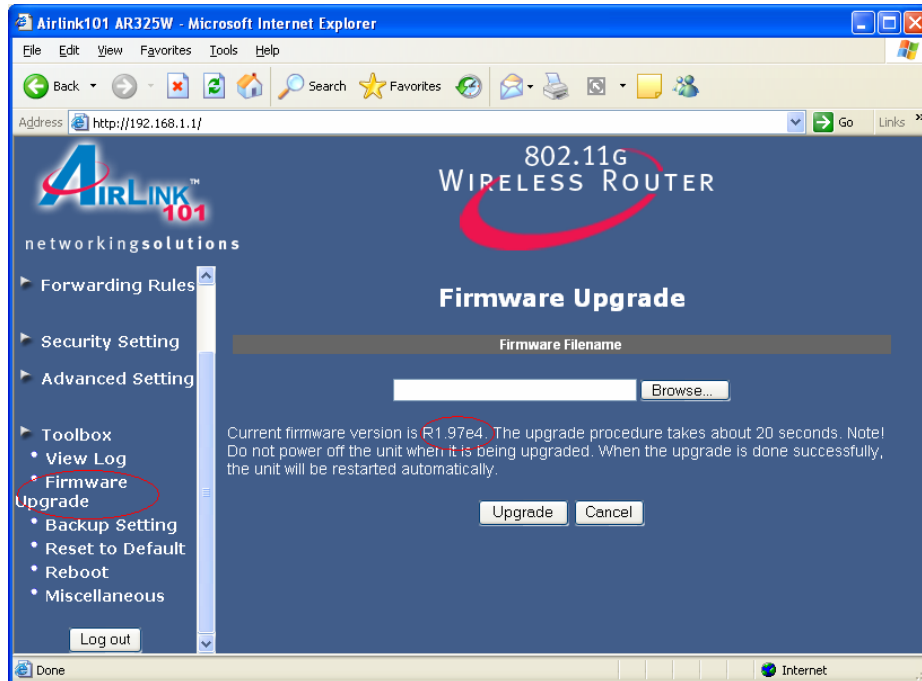
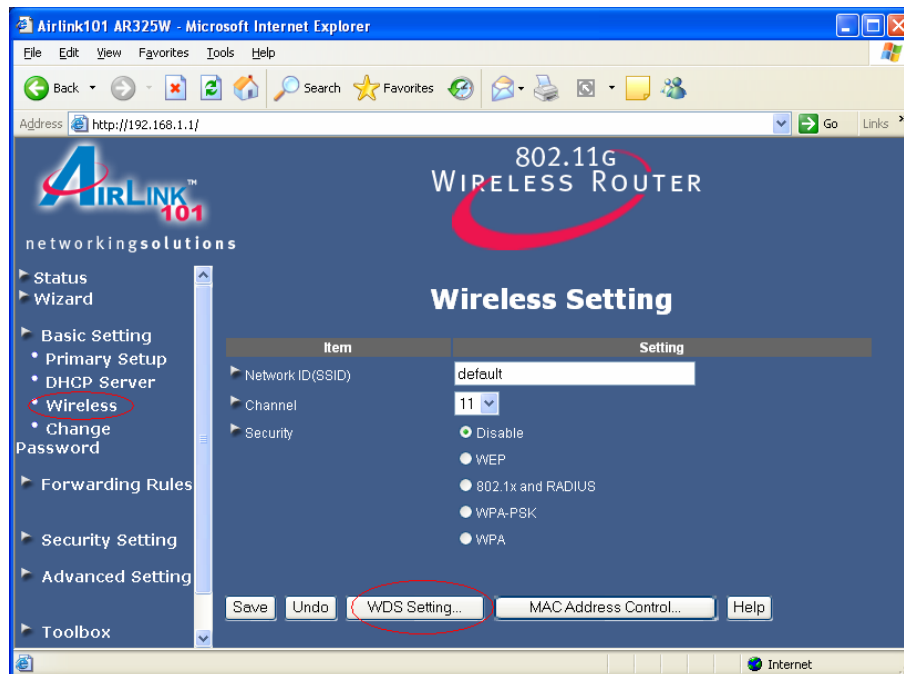


## How to configure Wireless Bridge with AR325W router?

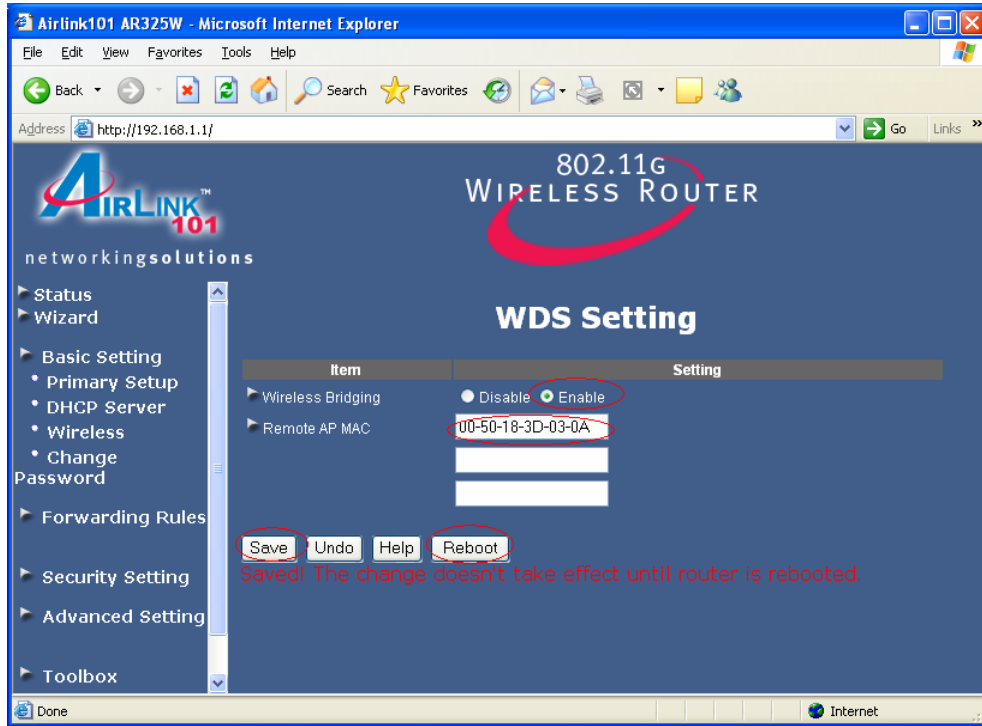
1. Make sure the firmware is upgraded to R1.97e4 or above. You may go to the router's configuration page => Toolbox => Firmware Upgrade to check the firmware version.



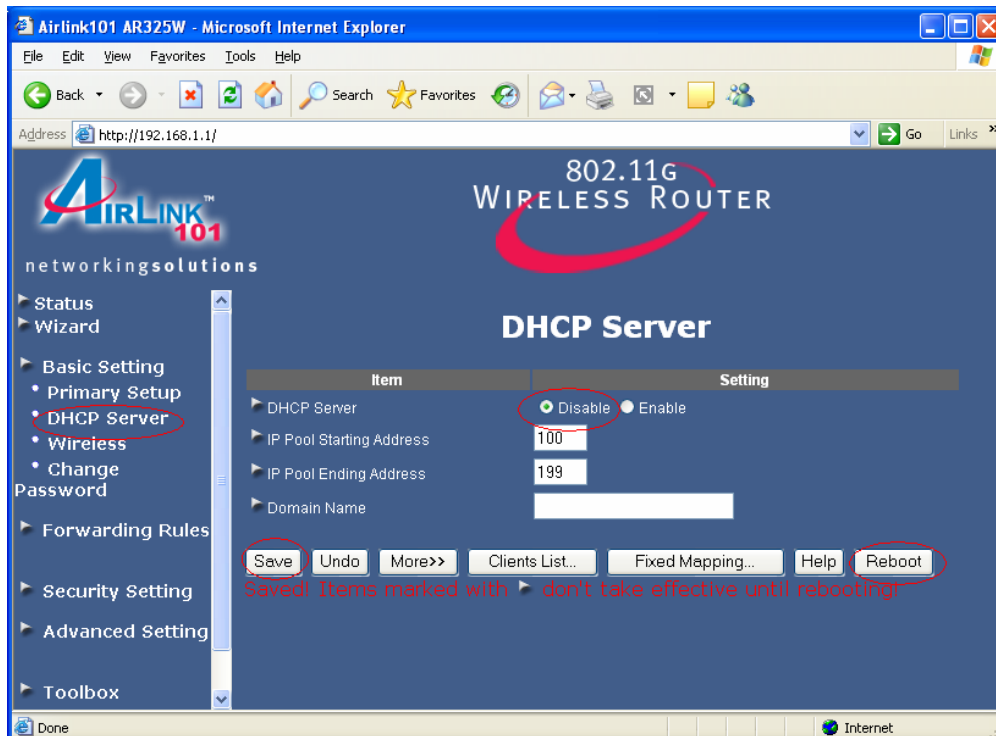
2. Go to Basic Setting => Wireless => WDS Setting to configure Bridge mode.



3. Enable WDS, type in the LAN/WLAN Mac address of remote AP, click Save and Reboot buttons to make your changes effective. Please note that the labeled Mac address of AR325W is WAN Mac address, its LAN/WLAN Mac address usually is 1 plus the WAN Mac address.



4. Disable the DHCP server by selecting Disable and click Save and Reboot.



5. Your Wireless Bridge is now ready to use. Bridge (WDS) only works with the same model (AR3325W). You may use a pair of the bridge to connect your remote networks wirelessly. Please use one of the LAN ports of AR325W to connect the Bridge to your network.