



## Golden 300N Wireless USB Adapter

Model #: AWLL6077v2



## Installation Instructions for MAC OS 10.4/10.5

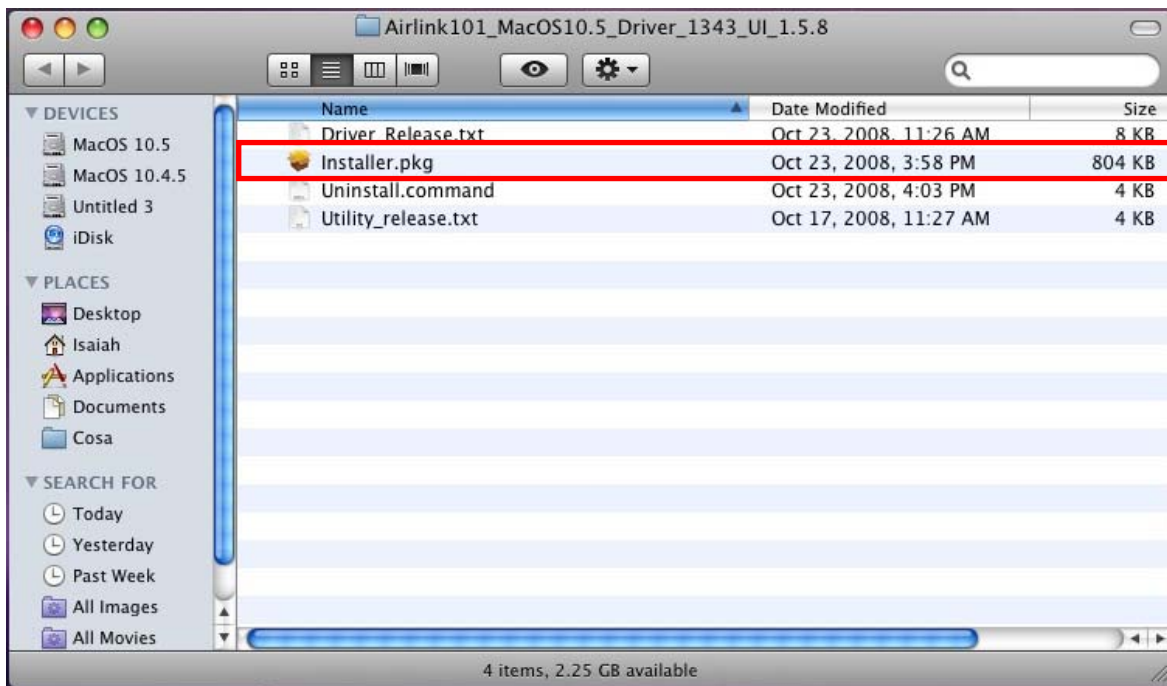
Rev. 1.0

# 1. Install Wireless USB Adapter

This section provides instructions on how to install the **Golden 300N Wireless USB Adapter**. The driver is installed along with the utility.

**Step 1** Insert the USB adapter into an available USB port of the computer. Insert the provided CD into the CD drive.

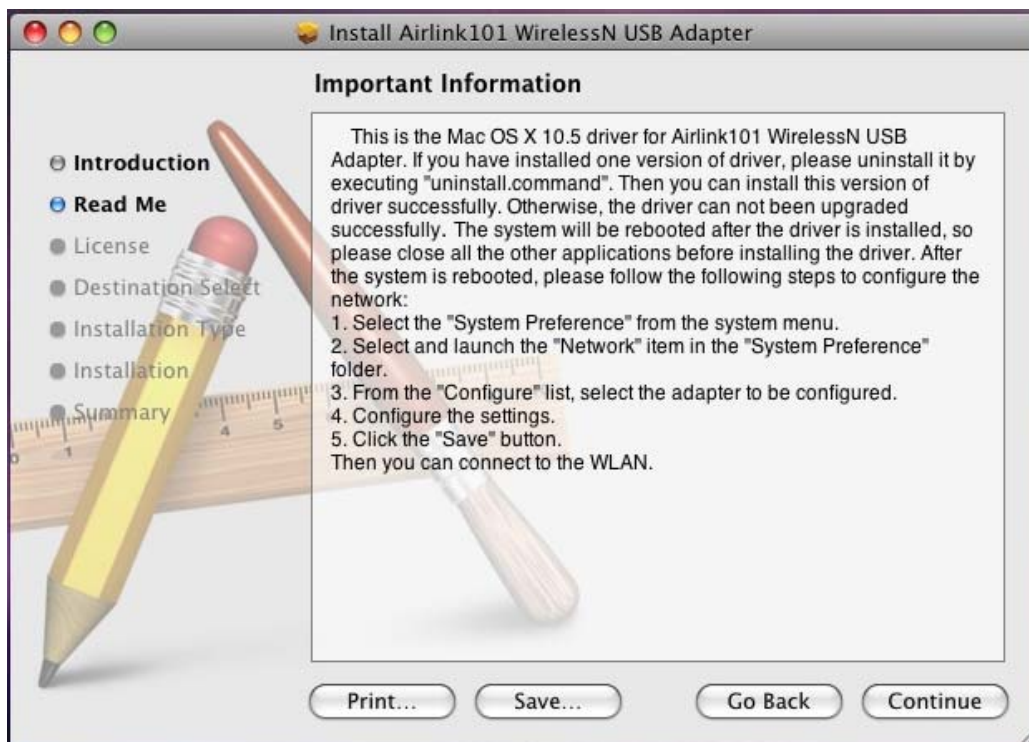
**Step 2** Explore the CD content, go to **MAC** > Airlink101\_USB\_MACOS10.4\_Driver or Airlink101\_USB\_MACOS10.5\_Driver (depends on your MAC OS version). Double click **Installer.pkg** from the driver folder.



**Step 3 Introduction:** The "Install Airlink101 Wireless N USB Adapter" window will pop up. Click **Continue**.

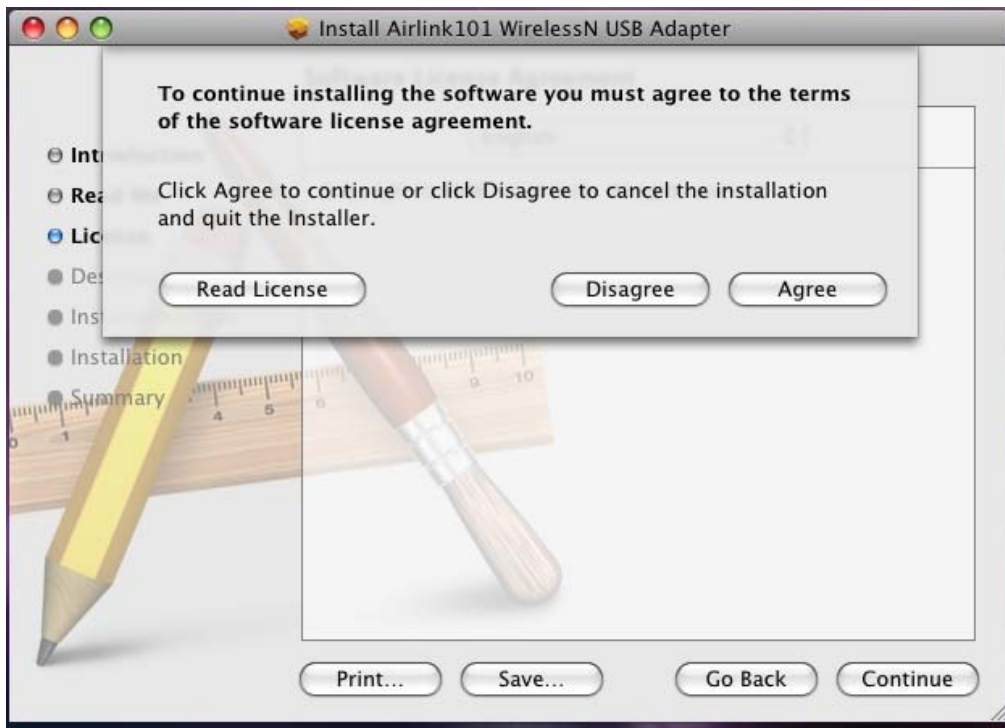


**Step 4 Read Me:** Click **Continue** to begin the installation.

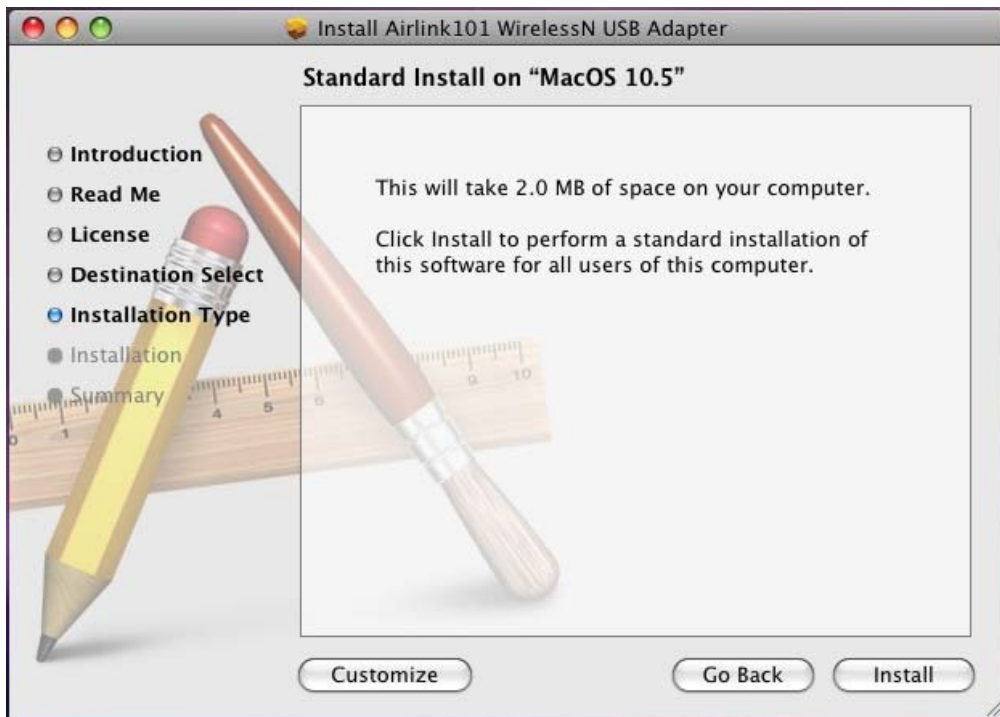


**Step 5 License:** Click **Continue**.

Click **Agree** to install.



**Step 6 Installation Type:** click **Install** to perform a standard installation.



Enter your password and click **OK**.



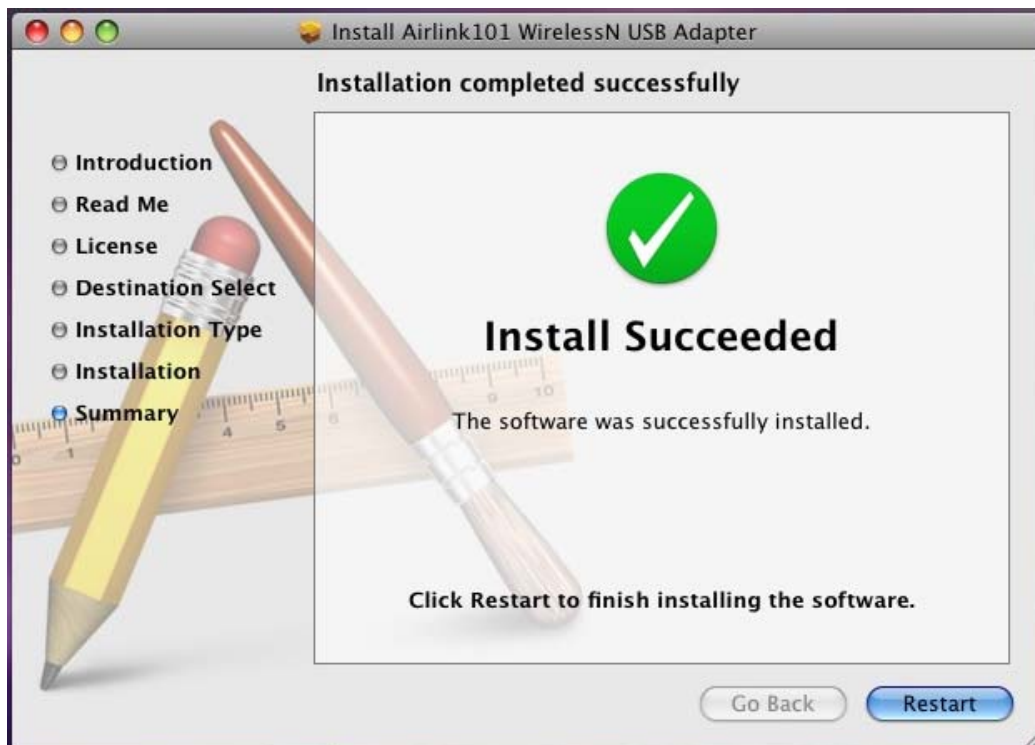
Click **Continue Installation**.



**Step 7 Installation:** Wait while the software is being installed.



**Step 8 Summary:** Click **Restart** to restart your computer.



## 2. Connect to Wireless Network

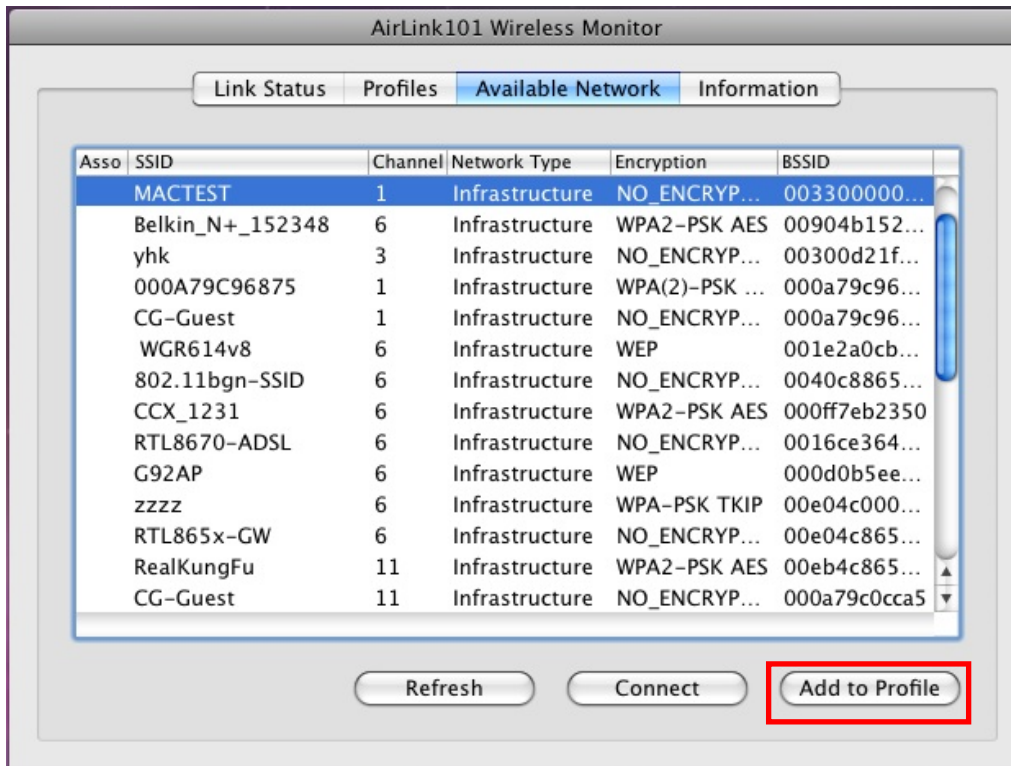
This section describes how to connect your wireless USB adapter to a wireless network.

Open the Airlink101 Wireless Monitor utility by double clicking on its icon in the system tray at the bottom of your screen.



Please select the wireless USB adapter you just installed in System Preferences// Network and click **Apply Now**.

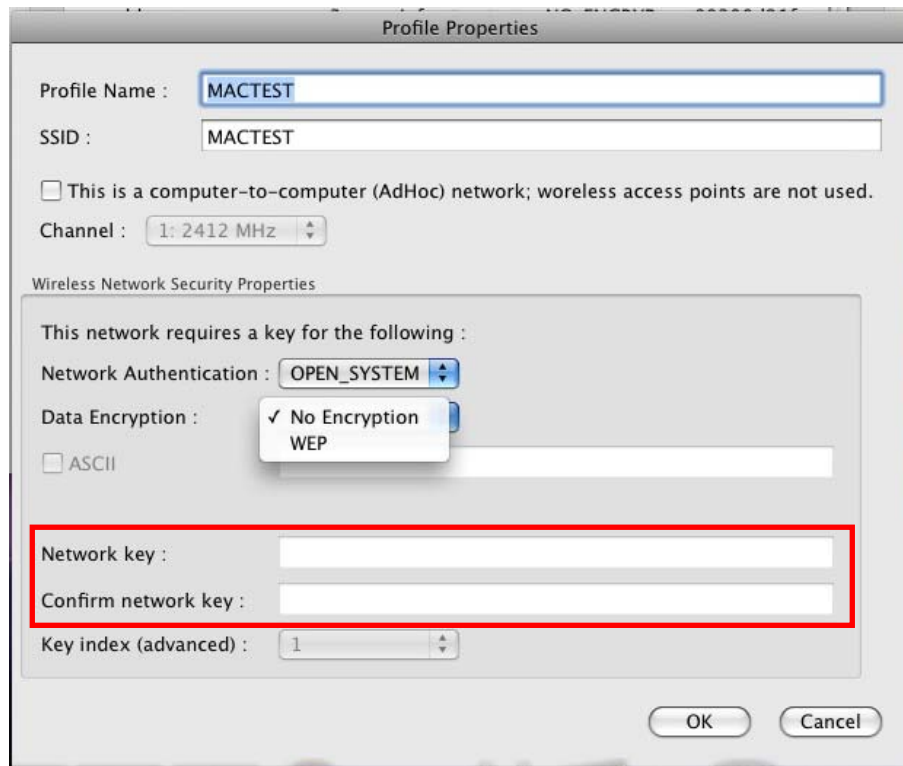
**Step 1** Click the **Available Network** tab, select the **SSID** (Network Name) of the wireless network you wish to connect to, and click **Add to Profile**.



If the network that you are attempting to connect does not have encryption enabled, you will receive a warning about connecting to an unsecured network. Click **OK** to complete the connection. Go to Step 3.

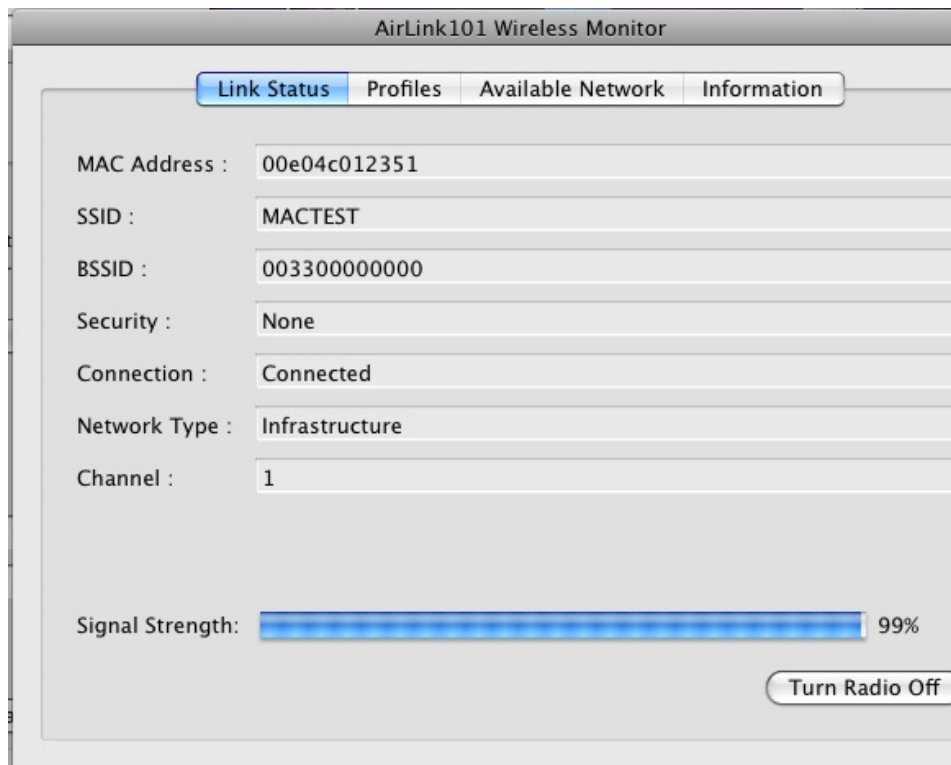
If the network that you are attempting to connect is configured for encryption, the Wireless Network Properties window will appear:

**Step 2** Enter the network security key of your wireless router or AP into **Network key** and **Confirm network key** boxes.



The Adapter may automatically detect the type of Network Authentication and Data Encryption. You need to enter the security settings in the **Network key, Confirm network key** boxes according to the settings of the wireless router or AP then click **OK** to connect.

**Step 3** The connection is now established. You can check the status of your connection under “Link Status” tab. The Connection should be **Connected**, and there should be a blue bar displaying the **Signal Strength**.



Congratulations! You have now successfully connected to the wireless network. You may refer to the User Manual in this Installation CD for detailed instructions of other advanced features of Airlink101 Wireless Monitor.

## Technical Support

E-mail: [support@airlink101.com](mailto:support@airlink101.com)

Toll Free: 1-888-746-3238

Web Site: [www.airlink101.com](http://www.airlink101.com)

\*Theoretical maximum wireless signal rate derived from IEEE standard 802.11g and draft 802.11n specifications. Actual data throughput will vary. Network conditions and environmental factors, including volume of network traffic, building materials and construction, mix of wireless products used, radio frequency interference (e.g., cordless telephones and microwaves) as well as network overhead lower actual data throughput rate. This product is based on IEEE draft 802.11n specification and is not guaranteed to be compatible with future versions of IEEE 802.11n specification. Compatibility with draft 802.11n devices from other manufactures is not guaranteed. Specifications are subject to change without notice. Photo of product may not reflect actual content. All products and trademarks are the property of their respective owners. Copyright ©2009 Airlink101®