



Quick Installation Guide

2-Port DVI USB KVM Switch with Audio

Model# AKVM-2UDA



Section 1


Introduction

The **AKVM-2UDA** is a 2-port Slim Palmtop USB KVM Switch with audio switching function. It allows you to access, control, boot and reboot 2 DVI-enabled USB multimedia computers. The independent audio/mic switching function allows an uninterrupted audio experience on a same connected computer even when you switch to another computer.

This KVM Switch adopts the DVI technology for digital video signal transmission over the cable to reduce undesired distortion from conventional analog/digital conversion. Both digital video (1920 x 1200) and analog video (2048 x 1536) are supported.

Section 2

Software Installation

 This software, USB KVM Switcher, is recommended for use on Windows 2000 or later and on Mac OS 10.4 (Tiger).

Step 1 Insert the provided **Software CD** into the CD drive and wait for the autorun page to display.


Note: If the autorun page does not appear go to **Start, Run,** and type **D:\Utility\Setup.exe** (where **D** is the letter of your CD drive) and click **OK**.

Step 2 Click **Install USB KVM Switcher** on the autorun page.



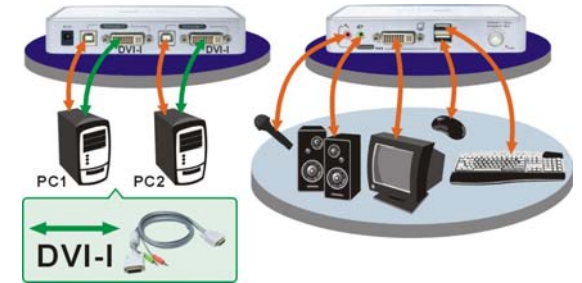
Step 3 Follow the on-screen instructions to complete the software installation.



 For other OS platforms such as Linux, you can still use the keyboard hotkey - *ScrLk* + *ScrLK* - to switch PC. However, this switching hotkey is not available on non-PC platform such as MacOS.

Step 4 Plug in the Power adapter to the Power receptacle on the back panel. Then connect the shared USB keyboard, mouse, monitor, speaker/headphone and microphone each to its port on your KVM Switch.

Step 5 Connect each KVM PC port to a computer, using the slim 3-in-1 KVM combo cable and the audio/mic cable. After you have connected the KVM and computers properly, you can operate the KVM Switch immediately.



Sharing High-speed USB Device

The 2 USB ports on the front-panel are normally used for keyboard and mouse connections. However, they are USB 2.0 hub ports and can also be connected to any USB devices so that you can easily switch and share the USB devices among two computers.



Section 3

Operations

There are three methods to control your KVM Switch for PC and Audio channel selection: using (1) the face-panel push button, (2) the hotkey sequences, or (3) the KVM Switcher Software.

Face-panel Push Button

The Switch Button let you directly change between the computers. Simply press the button on the KVM to select the computer.

Hotkey Sequence

The Hotkey Sequence consists of three specific keystrokes pressed on the keyboard:

Ctrl + Alt + [Command key]

The factory default command key is:

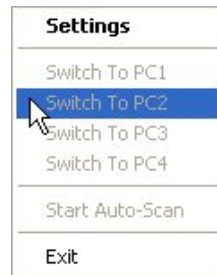
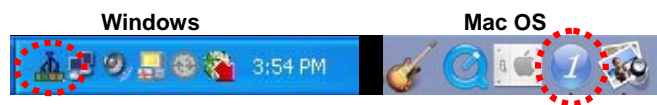
Ctrl + Alt + 1 or 2 for PC 1 or 2

You can also use **ScrLk + ScrLk + 1 or 2** to switch between computers. However, this special hotkey is not available for Mac.

Note: Each keystroke of the Hotkey Sequence should be pressed within 2 seconds; otherwise, the Hotkey Sequence will not be validated.

KVM Switcher Software

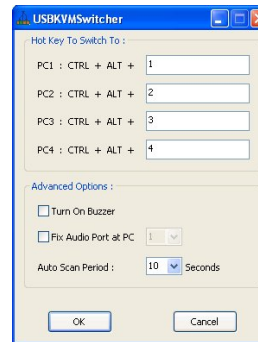
Right click the KVM Switcher icon to evoke the operation menu, then select whichever PC that is available for switching. Once you select a PC channel, it will immediately switch to that PC. Note that the unconnected port(s) or the active port will be grayed-out and hence non-selectable.



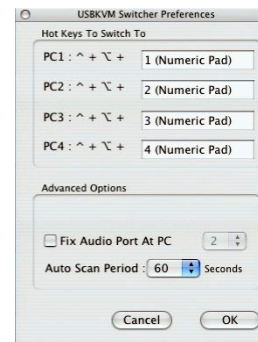
Windows: Operation Menu



Mac OS: Operation Menu



Configuration Dialog Box



Configuration Dialog Box

Define Hotkey commands

The command key is user-definable via the configuration dialog box. You can specify the command key as you like by typing it in.

For example, you can specify the hotkey for switching to PC 1 as CTRL + ALT + A by typing an A (not case-sensitive) in the editable field.

Note: If you intend to modify the command key, you have to modify them on each and every of the connected computers, since the hotkey setting is stored within each connected computer.



Except those control keys such as Alt, Ctrl, Shift, CAPS, Tab, Esc and those functions keys and edit keys, all other keys on the keyboard, including those number keys on the number pad, are all other keys qualified to be used as hotkey command keys. In addition to the software KVM Switching by the operation menu and the user-defined hotkeys, you can always use the universal hotkey for PC switching – ScrLk + ScrLk

Advanced Options

• Fix Audio Port:

Check this option and then select the PC to fix the audio/mic channel to the selected PC. Once this option is checked, the audio/mic channel will be fixed and become non-switchable.

• Auto Scan Period:

Select the Autoscan period from 10 ~ 60 seconds with an increment of 5 seconds. The Autoscan period is the time your KVM Switch will wait to switch to next PC.

Section 4

Technical Support

Email: support@airlink101.com

Toll Free: 1-888-746-3238

Web Site: www.airlink101.com

Copyright © 2007 AirLink101®. All rights reserved. AirLink101®, the stylized AirLink101 logo, specific product designations, and all other words and logos that are identified as trademarks and/or service marks are, unless noted otherwise, the trademarks and service marks of AirLink101. All other product or service names are the property of their respective holders. AirLink101 products are protected under numerous U.S. and foreign patents and pending applications, mask work rights, and copyrights.