



Ver. 1A

Quick Installation Guide

4-Port USB KVM Switch with Audio

Model # AKVM-U42



Section 1

Introduction

The **4-Port USB KVM Switch with audio** enables you to access, control, and reboot multiple USB-enabled multimedia computers using only one USB keyboard, USB mouse, and monitor. Its audio and microphone ports also allows you to share one set of speakers and microphone.

With detachable KVM cables and features such as Plug-and-Play and hot-pluggability, you can enjoy maximum flexibility and convenience with its compact and advanced design.

Section 2

Installation

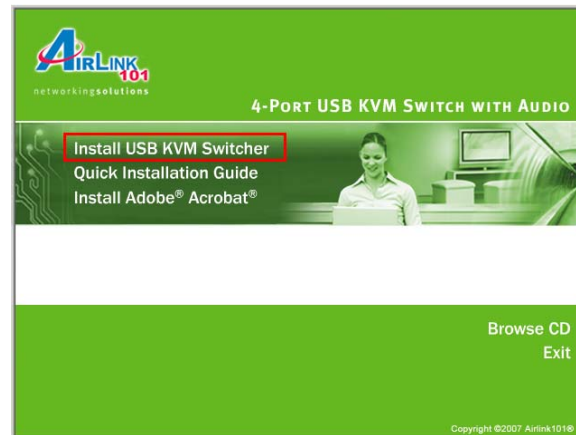
Note: If you use Windows 95/98/SE and have not yet installed a USB mouse on your computer, it is recommended that you install the USB mouse on your computer first before connecting it to the KVM Switch.

You may also need to enable the USB option in the BIOS on some older computers. If your USB interface does not work, please check the USB option status in the computer's BIOS.

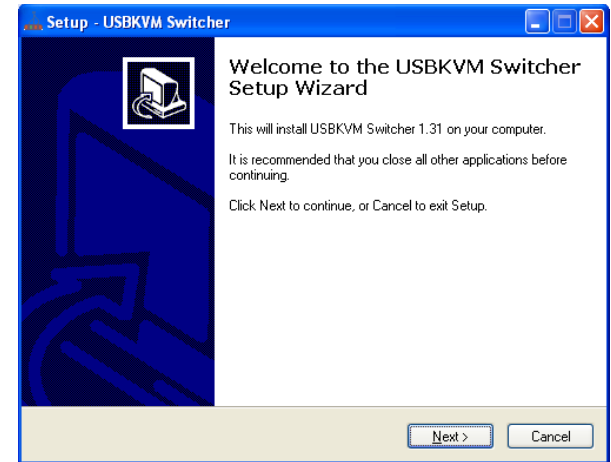
Step 1 Insert the provided **Software CD** into the CD drive and wait for the autorun page to display.

Note: If the autorun page does not appear go to **Start, Run,** and type **D:\Utility\Setup.exe** (where **D** is the letter of your CD drive) and click **OK**.

Step 2 Click **Install USB KVM Switcher** on the autorun page.

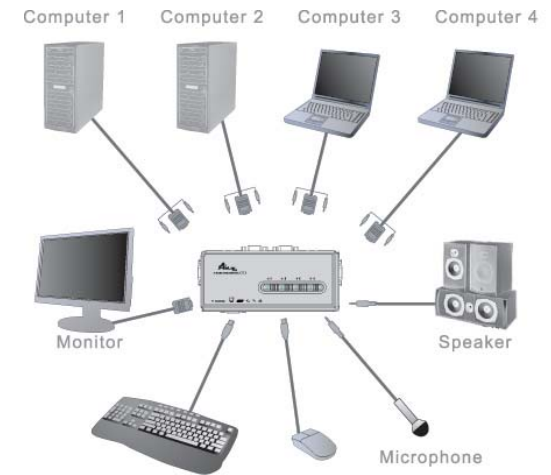


Step 3 Follow the on-screen instructions to complete the software installation.



Step 4 Install the KVM Switcher software on all the computers that will be connected to the KVM.

Step 5 Connect the shared keyboard, monitor, and mouse to the KVM switch. You may also connect speakers and microphone to the KVM switch.



Step 6 Connect each of the detachable KVM cables to the KVM switch and a computer's video and usb ports. You can also connect the cables to the computer's audio and microphone ports.

Continue on Back

Section 3

Operations

There are several methods to switch between the computers:

Using the **Switch Button** or the **Hotkey Sequence**.

Switch Button

The Switch Button let you directly change between the computers. Simply press the button on the KVM to select the computer.

Hotkey Sequence

The Hotkey Sequence consists of three specific keystrokes pressed on the keyboard:

Ctrl + Alt + [Command key]

Note: The factory default command key is:

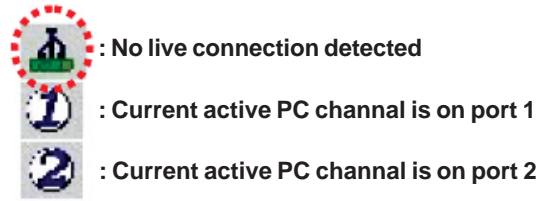
Ctrl + Alt + 1 (or 2, 3, 4) for PC 1 (or 2, 3, 4)

You can also use **ScrLk + ScrLk** to switch between computers for non-Windows operating systems.

Note: Each keystroke of the Hotkey Sequence should be pressed within 2 seconds; otherwise, the Hotkey Sequence will not be validated.

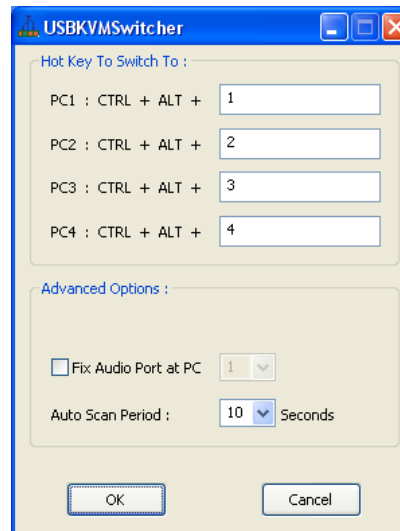
For Windows operating system, you may also use the KVM Switcher software to change between the computers.

The KVM Switcher icon will appear in the system tray once you have installed the software.



Right-click on the icon to bring up the context menu and select the PC you wish to change to.

Select **Settings** to bring up the KVM Switcher configuration screen.



You may use the configuration screen to define the command key used for the Hotkey Sequence.

For example, you can specify the command key for switching to PC 1 as **Ctrl + Alt + A** by typing an **A** (not case-sensitive) in the editable field and click **OK**.

All the keys on the keyboard are qualified to be used as command keys except **Alt**, **Ctrl**, **Shfit**, **Caps**, **Tab**, **Esc** and the **function keys and edit keys**.

Advanced Options

• Fix Audio Port :

Check this option and then select the PC to fix the audio/mic channel to the selected PC. Once this option is checked, the audio/mic channel will be fixed and become non-switchable.

• Auto Scan Period :

Select the Autoscan period from 10 ~ 60 seconds with an increment of 5 seconds. The Autoscan period is the time your KVM Switch will wait to switch to next PC.

Section 4

Technical Support

Email: support@airlink101.com

Toll Free: 1-888-746-3238

Web Site: www.airlink101.com