



**1 Port USB 2.0 Multi-Functional Printer Server**

**Model # APSMFP210**

# **Quick Installation Guide**

# Section 1

## Connecting the MFP Print Server

**Warning:** Only a USB printer may be connected to the USB port of the Print Server. Connecting any other USB device to the Print Server may damage the Print Server.

**Note:** Before installing the MFP Print Server, make sure you can print, scan, or fax with your multi-functional printer directly connected to your computer(s).

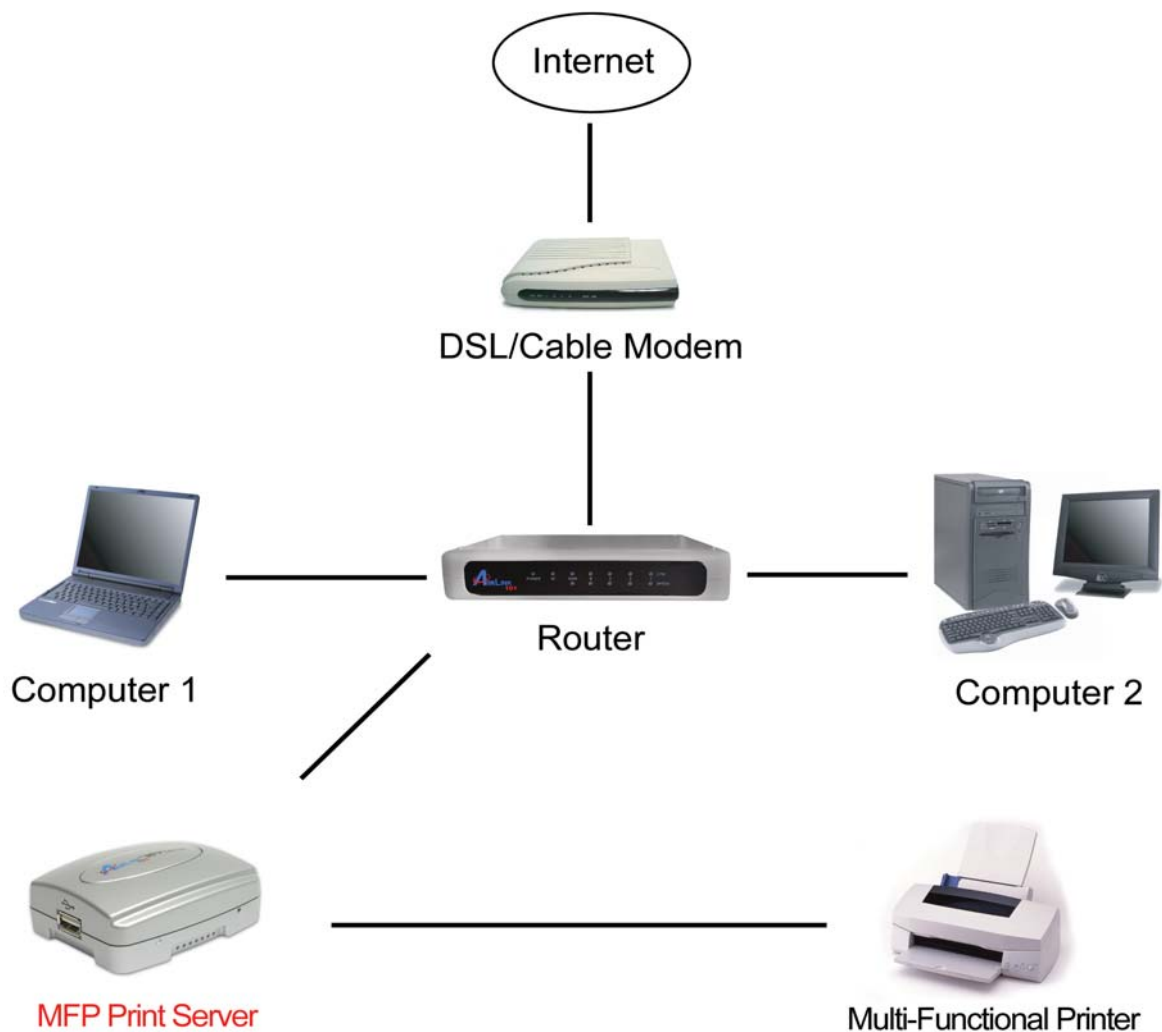
Do not plug the power cord to the MFP Print Server until you have reached **Step 4** of this section.

**Step 1** Connect one end of the network cable to the **LAN** port of the Print Server and attach the other end of the cable to a router or switch.

**Step 2** Make sure the printer is powered **OFF**, then connect the printer to the USB port of the Print Server

**Step 3** Power **ON** the printer.

**Step 4** Plug one end of the power cord into the Print Server and the other end into an electrical outlet.



## Section 2

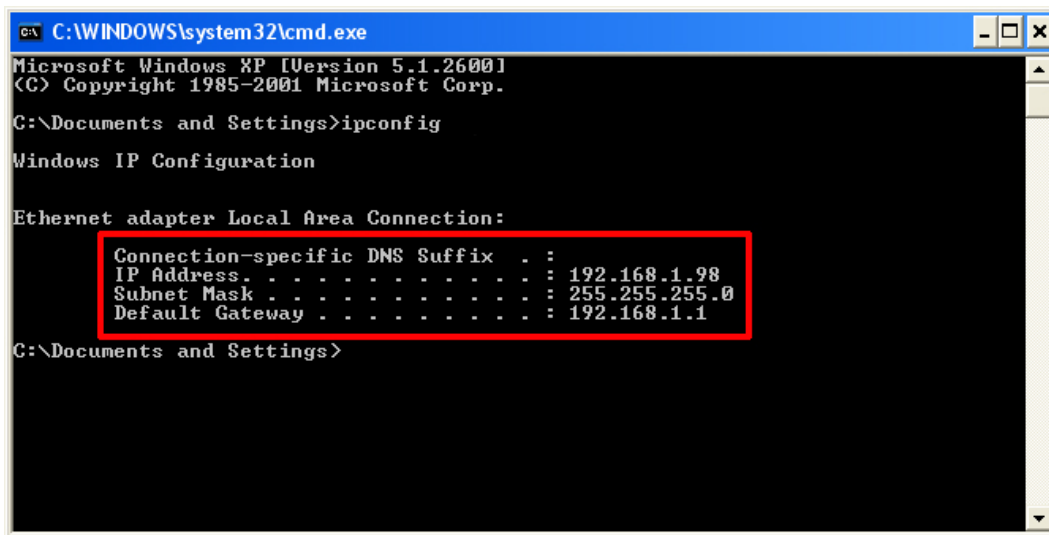
# Configuring Network Settings

Before configuring the Print Server's network settings, please take note of your computer's TCP/IP setting.

**Step 1** Click on **Start**, **Run**, and type **cmd** and click **OK**.

**Step 2** At the command prompt, type **ipconfig** and press **Enter**.

**Step 3** Write down the information for the **IP Address**, **Subnet Mask**, and **Default Gateway**. You will need this information later.



```
C:\WINDOWS\system32\cmd.exe
Microsoft Windows XP [Version 5.1.2600]
(C) Copyright 1985-2001 Microsoft Corp.
C:\Documents and Settings>ipconfig

Windows IP Configuration

Ethernet adapter Local Area Connection:

    Connection-specific DNS Suffix  . : 
    IP Address . . . . . : 192.168.1.98
    Subnet Mask . . . . . : 255.255.255.0
    Default Gateway . . . . . : 192.168.1.1

C:\Documents and Settings>
```

**Step 4** Insert the Utility CD into your CD-ROM drive for the autorun screen. Select **Run MFP PS Setup Wizard** from the menu.

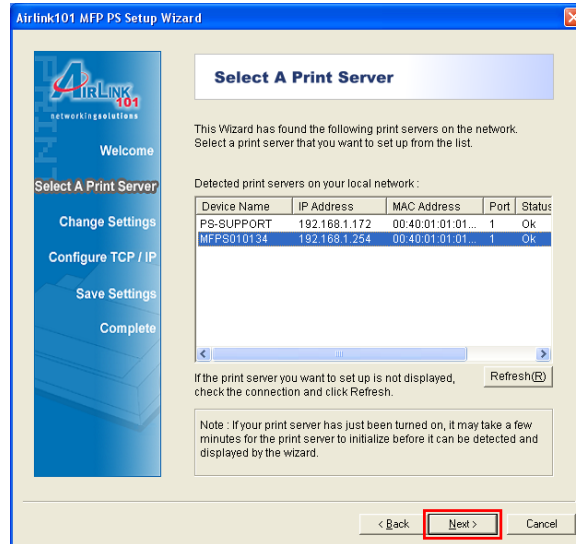


**Note:** If the autorun window does not appear automatically, go to Start, Run, and type **D:\PS-Wizard\MFP-PSWizard.exe** (where **D** is the letter of your CD drive) and click **OK**.

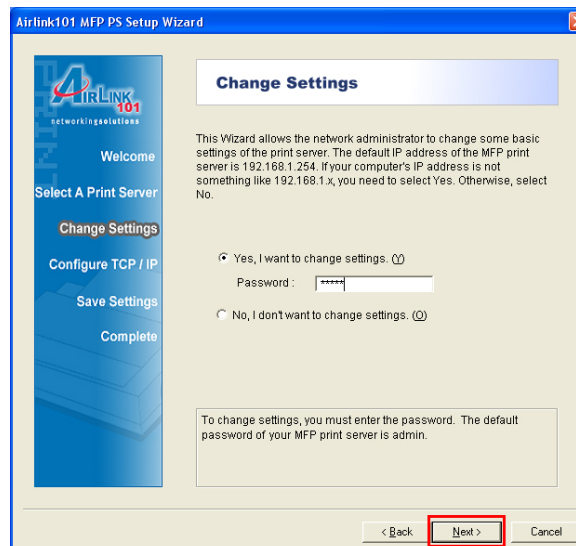
**Step 5** Click **Next** at the welcome screen.



**Step 6** Select your MFP Print Server in the list and click **Next**. If you have more than one print server connected to your LAN, you will see multiple ones listed.



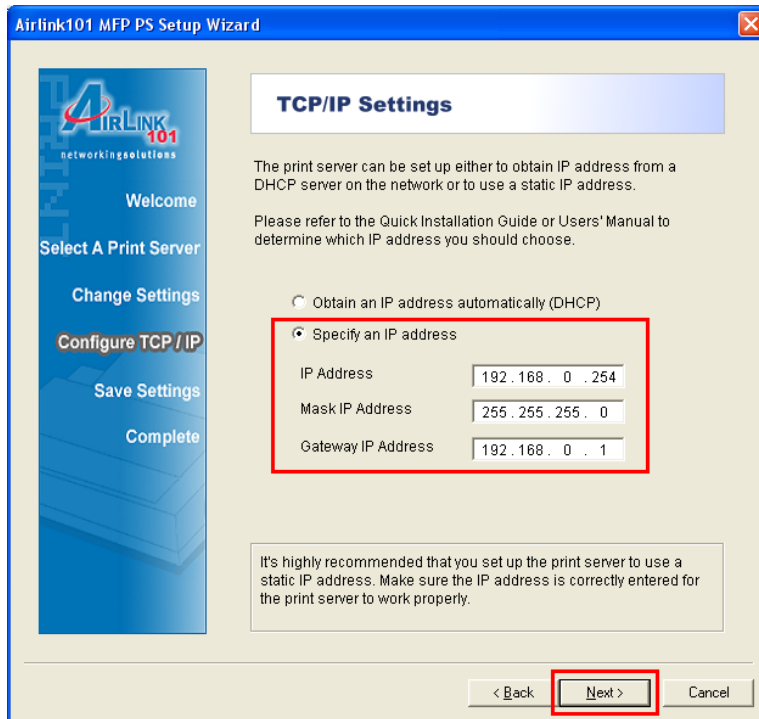
**Step 7** Refer to the information you wrote down at **Step 3**. If your computer's IP address is **not 192.168.1.x** (where x is a number between 2-254), select **Yes, I want to change settings**, and enter **admin** (the default password) in the password field. Otherwise, select **NO**. Click **Next**.



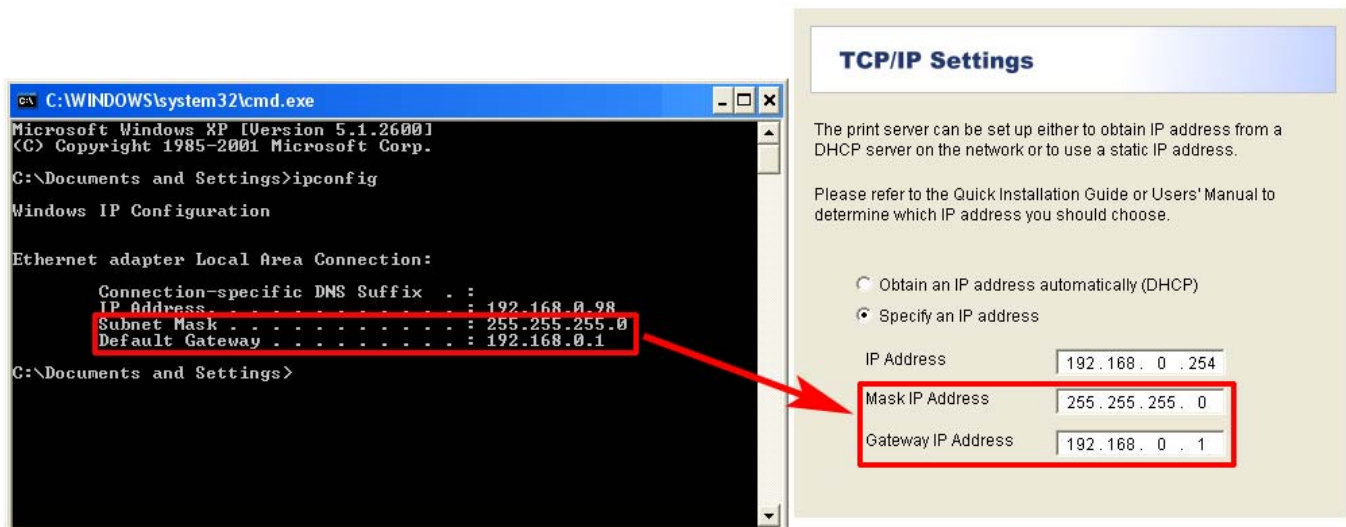
**Step 8** In the **IP Address** field, enter a valid IP address, subnet mask, and default gateway that matches your local area network.

**For example:** If your computer's **IP Address** is **192.168.0.100**, enter the same three numbers: **192.168.0** in the corresponding fields.

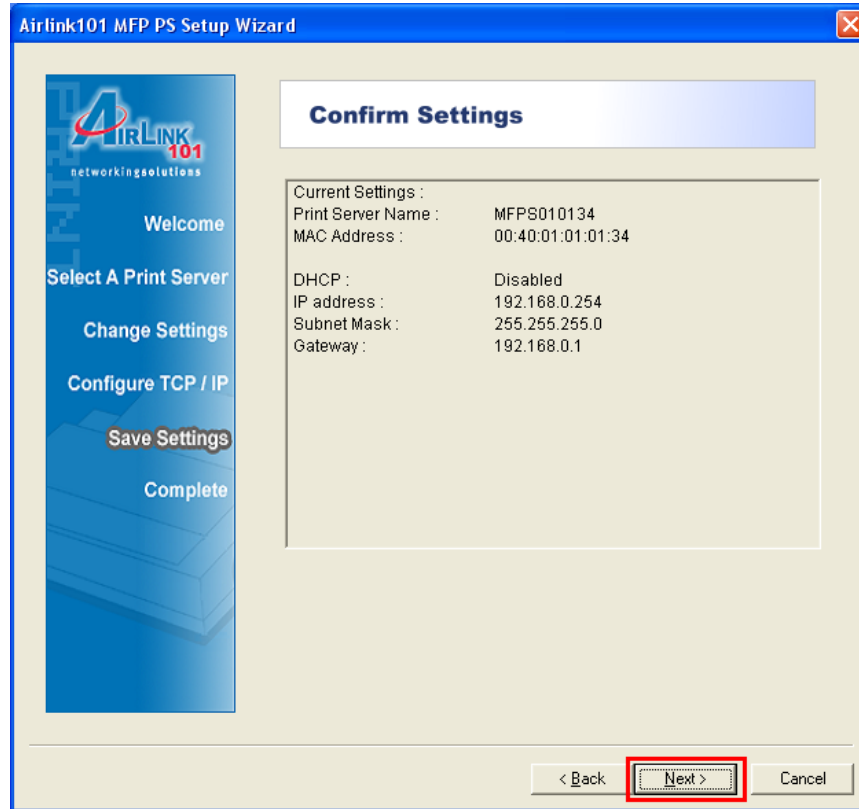
**Note:** You can leave the last IP Address number **254** as is unless another network device (i.e. the **Default Gateway**) is already using that number. If another network device is already using **254**, then change it to another number that is currently not in use (preferably **200 - 253**).



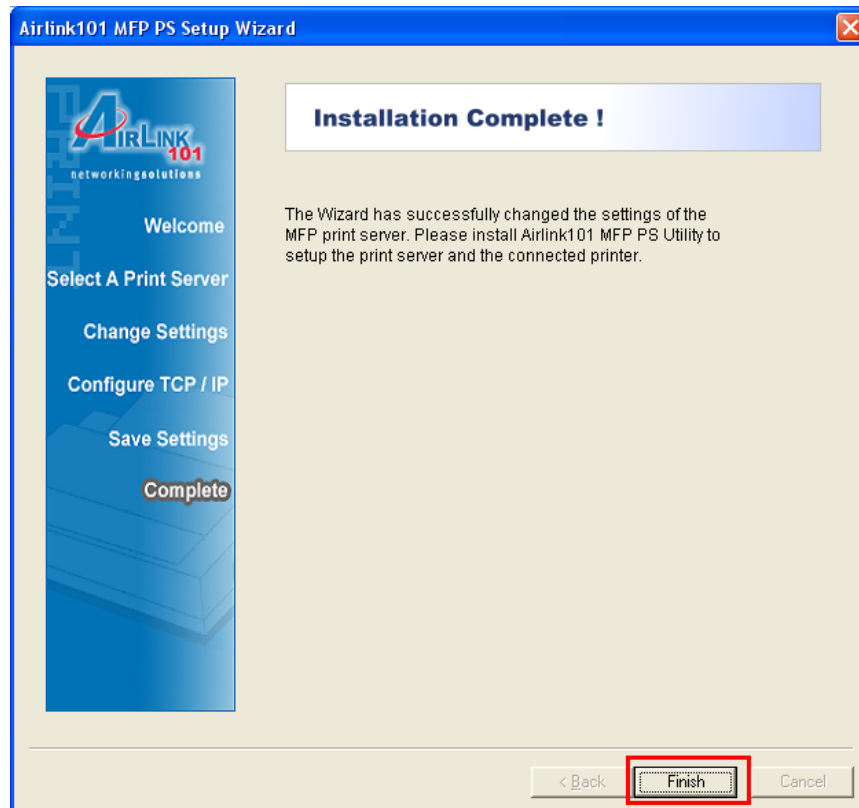
For the **Subnet Mask** and **Default Gateway** fields, enter the numbers for Subnet Mask and Default Gateway you wrote down at **Step 3**. Click **Next** to continue.



**Step 9** Click **Next** to save the settings you have made or click Back to correct the settings.



**Step 10** Click **Finish**.



## Section 3

# Installing MFP PS Utility

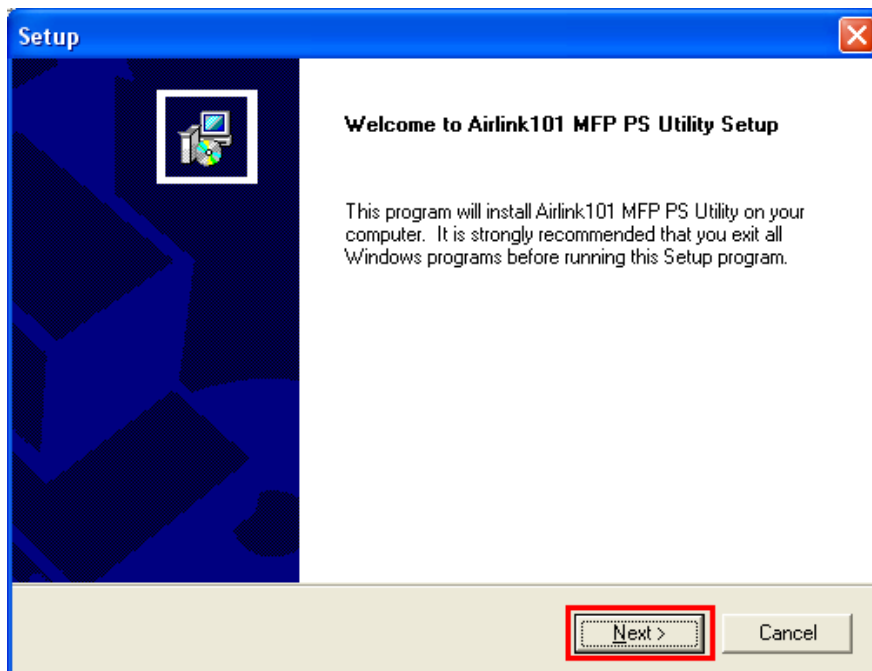
**Step 1** Insert the provided CD and wait for the autorun screen to appear.

**Step 2** Select **Install MFP PS Utility** from the menu.

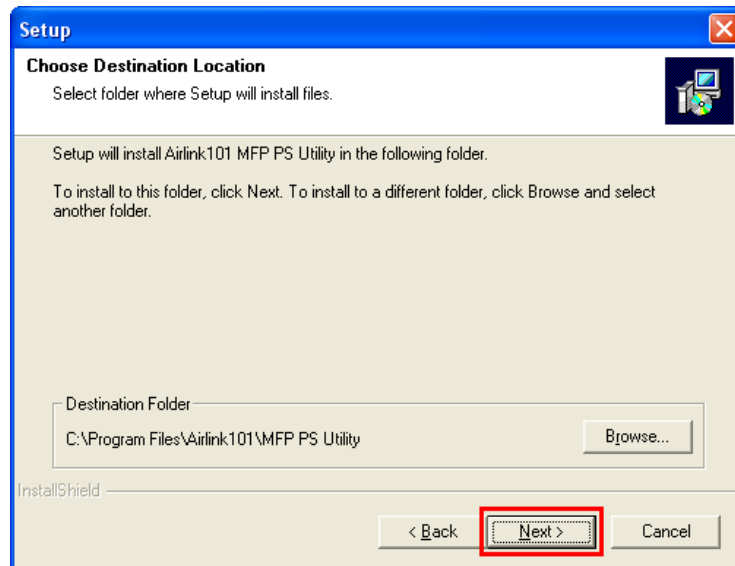


**Note:** If the autorun window does not appear automatically, go to Start, Run, and type **D:\PS-Utility\Setup.exe** (where **D** is the letter of your CD drive) and click **OK**.

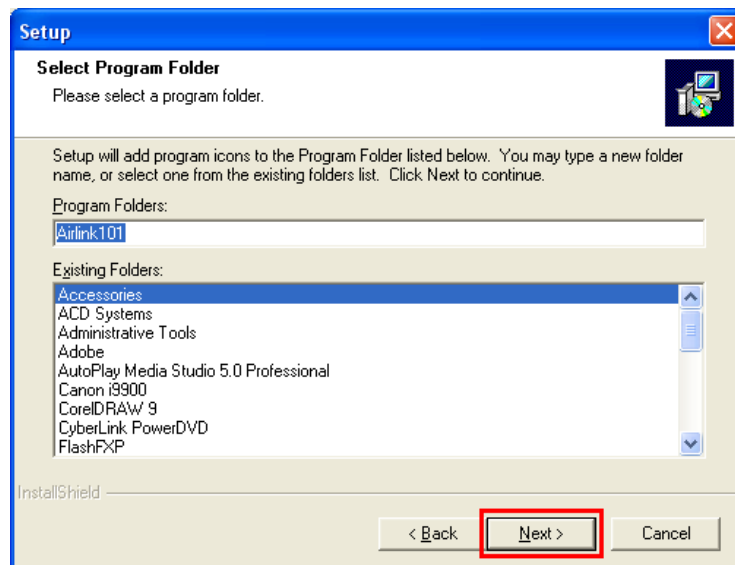
**Step 3** Click **Next** at the welcome screen.



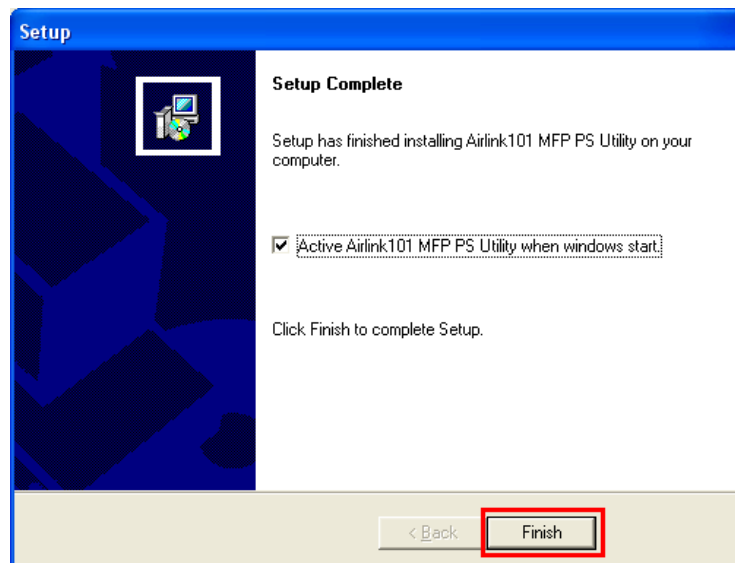
**Step 4** Click **Next** to accept the default destination folder.



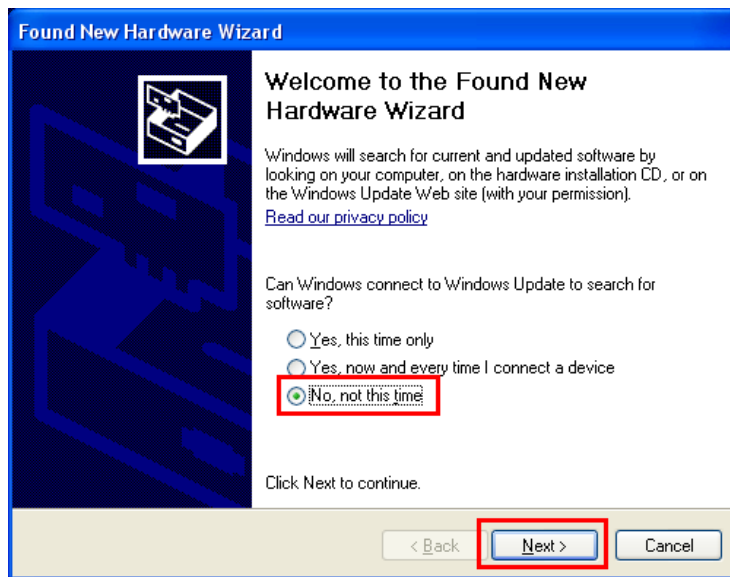
**Step 5** Click **Next** to accept the default program folder.



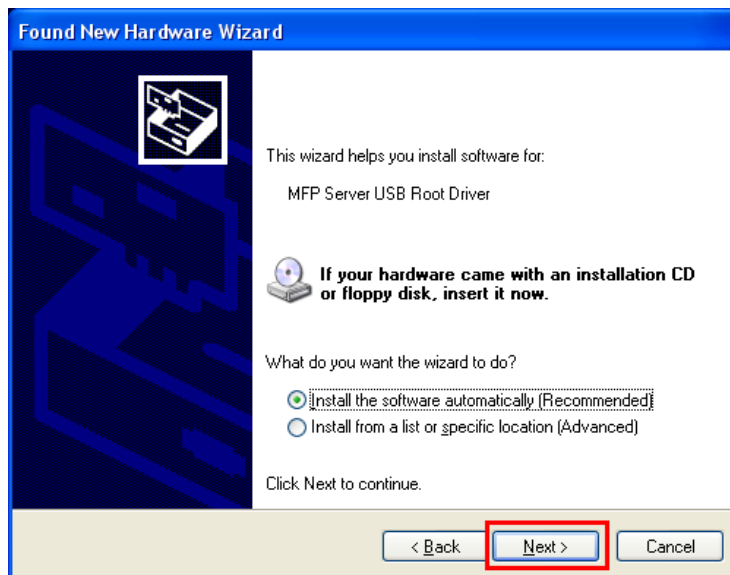
**Step 6** Click **Finish**.



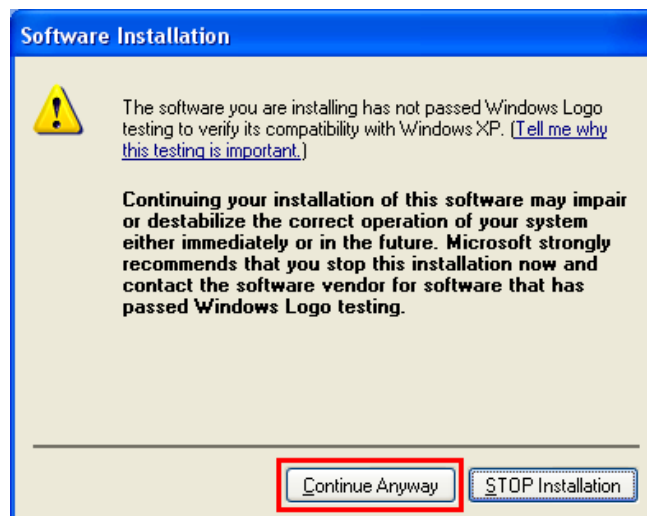
**Step 7** When the Found New Hardware Wizard pops up automatically, select **No, not this time** and click **Next**.



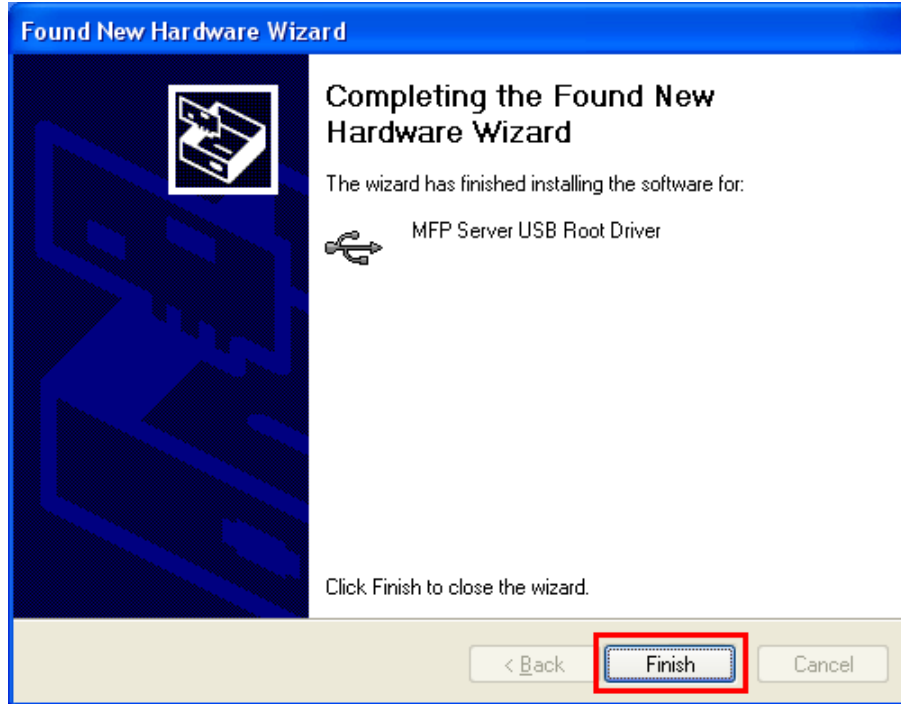
**Step 8** Select **Install the software automatically** (recommended) and click **Next**.



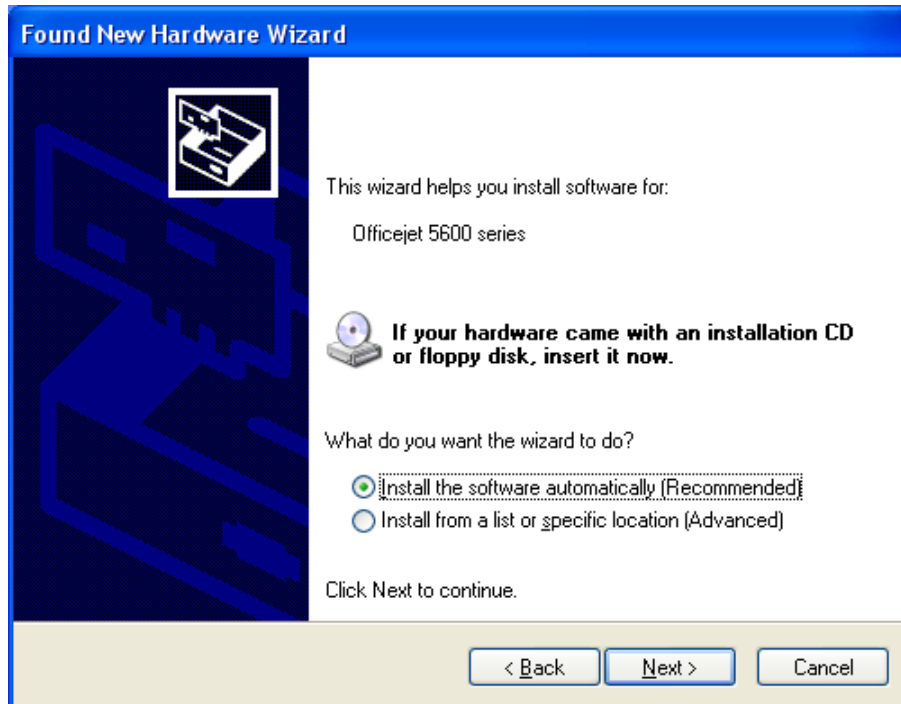
**Step 9** Click **Continue Anyway** at the Windows Logo Screen. (For Windows 2000, click **Yes** at the Digital Signature Not Found prompt).



**Step 10** Click **Finish**.



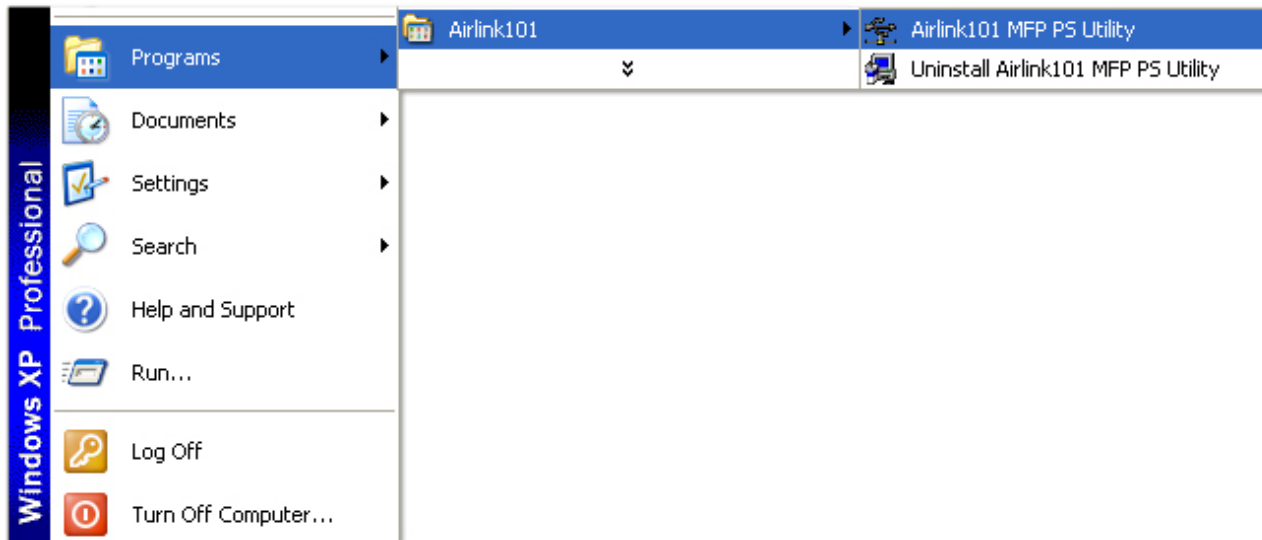
**Step 11 (Optional)** If the **Found New Hardware Wizard** pops up, follow the on-screen instructions to install your printer driver.



# Section 4

## Using MFP PS Utility

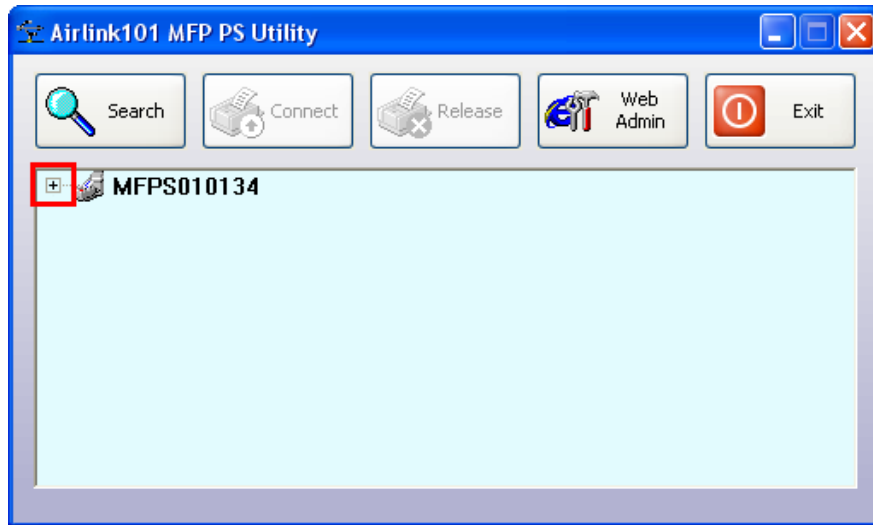
**Step 1** To run the MFP PS Utility, go to **Start > (All) Programs > Airlink101 > Airlink 101 MFP PS Utility**.



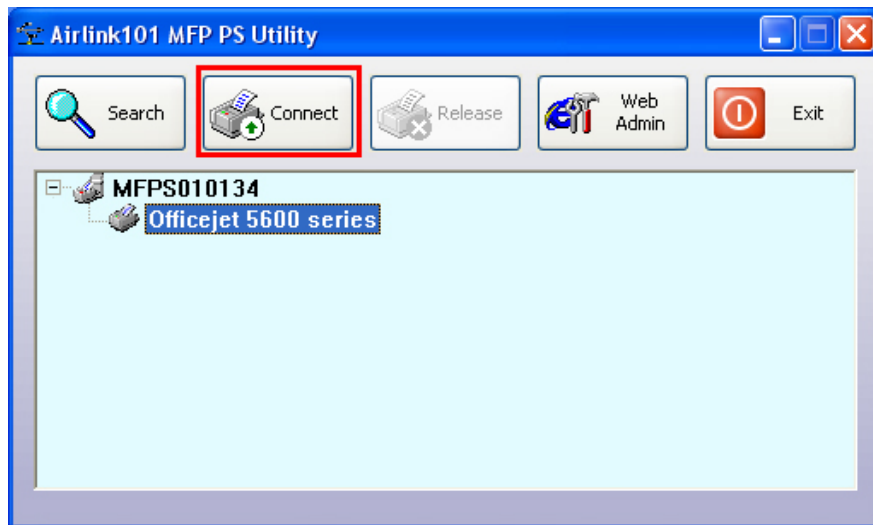
**Step 2** Click **Unblock** if the Windows Security Alert pops up.



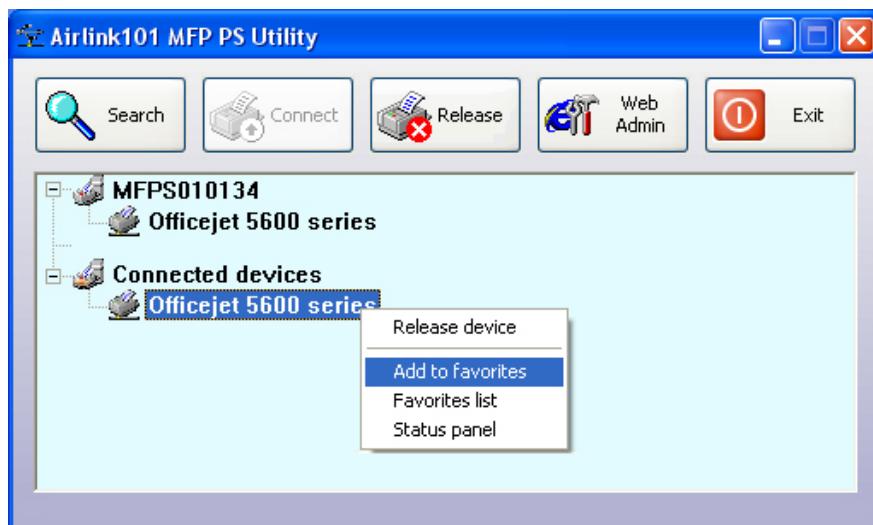
**Step 3** Make sure the MFP Print Server is detected in the window. Click on the plus sign “+” (after clicking it, you will see a “-” sign) on the left side of the MFP print server.



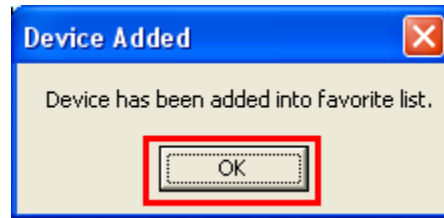
**Step 4** Select your printer and click **Connect**.



**Step 5** Click the plus sign “+” on the left side of the **Connected devices**, select your printer, right click it and click **Add to favorites**.



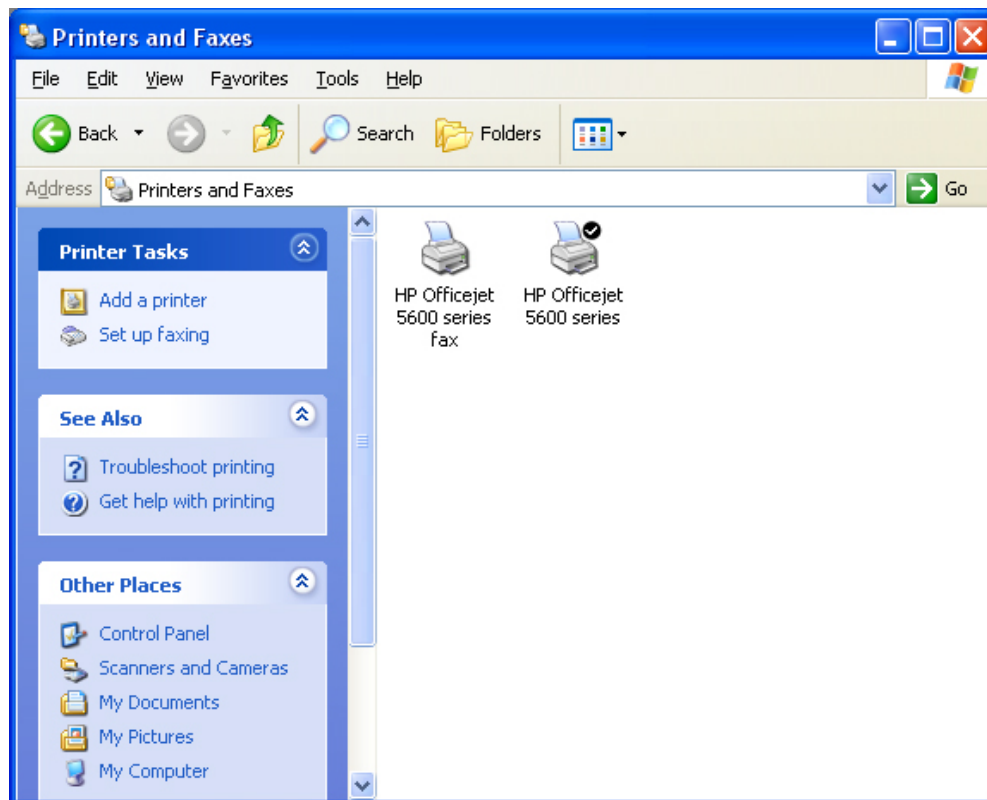
**Step 6** Click **OK**.



**Step 7** Close the PS Utility window by clicking the “X” at the upper right corner on the window to keep this program running at the background. If you click **Exit**, the MFP PS Utility will be shut down.

**Step 8** Go to **Control Panel > (Printer and Other Hardware) > Printers and Faxes**. Make sure the printer icon appears in the window.

**Note:** If the printer’s driver has been installed on the computer before you install this device, the MFP print server will install another instance (i.e. Printer Copy 2) of your printer.



**You have successfully configured the MFP Print Server for printing.**

This Quick Installation Guide only provides the basic instructions. For more advanced features such as faxing, please refer to the User’s Manual in the provided CD.

# Section 5

## Technical Support

E-mail: [support@airlink101.com](mailto:support@airlink101.com)

Toll Free: 1-888-746-3238

Web Site: [www.airlink101.com](http://www.airlink101.com)

\*Printer server may not support all printers. Go to the Airlink101 website to view the printer compatibility list

\*Actual data throughput will vary. Network conditions and environmental factors lower actual data throughput rate. Specifications are subject to change without notice. All products and trademarks are the property of their respective owners. Copyright ©2006 Airlink101™