



Quick Installation Guide

Wireless N 150 3G/3.75G Travel Router

Model # AR550W3G



Ver. 1A

Package Contents

Before you begin the installation, please check the items in the package:

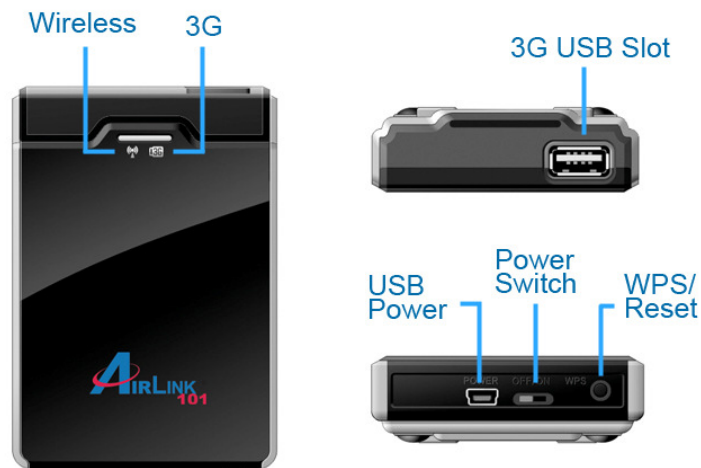
- Wireless N 150 3G/3.75G Travel Router
- Power Adapter
- USB Cable (for power use only)
- Setup CD
- Quick Installation Guide

Section 1

This Quick Installation Guide only provides basic instructions. For detailed information on using this product, please refer to the User's Manual on the supplied CD.

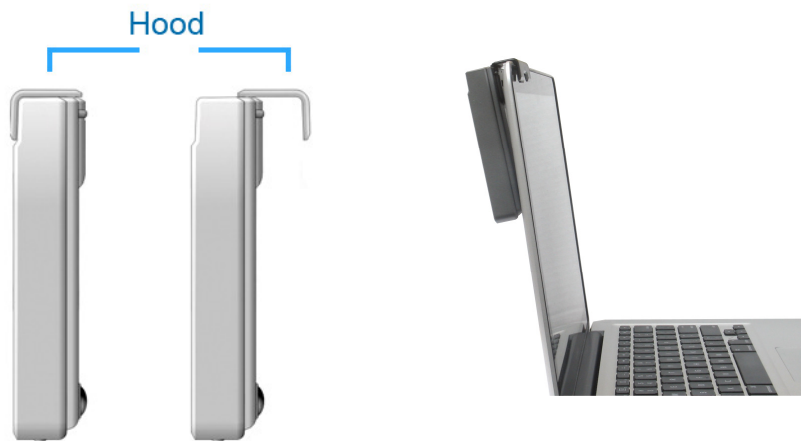
Hardware Introduction

A. Hardware Configuration



Button/Switch	Description
Power Switch	Switch On/Off the Power.
WPS/Reset	Push the button and hold for 1 second to activate WPS procedure.
	Push the button and hold for 6 seconds to reset the router to factory default.

B. Hood Assembly



C. LED Indicators

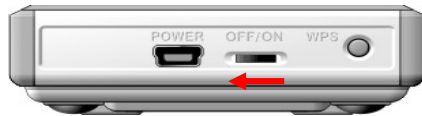
	LED color	Description
3G (USB)	Blue	3G/3.75G is on
	Flashing Blue	Data access
Wireless	Blue	WLAN is on
	Flashing Blue	Data access

	Quickly Flashing Blue	WPS activated
--	-----------------------	---------------

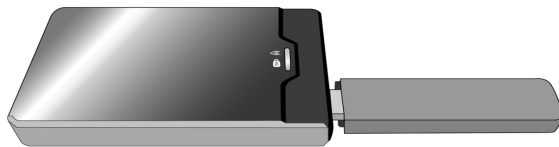
Section 2

Configuring the Router

Step 1 Make sure power switch is switched to OFF



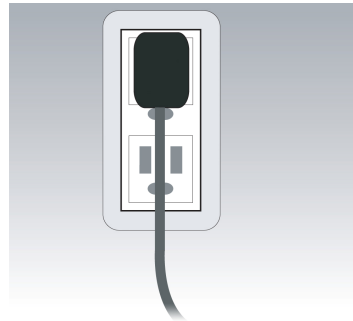
Step 2 Plug your USB 3G Modem into the Router.



Step 3 Power up the Router. You can choose either Power Adapter or USB Cable for power supply.

3.1 Use Power Adapter:

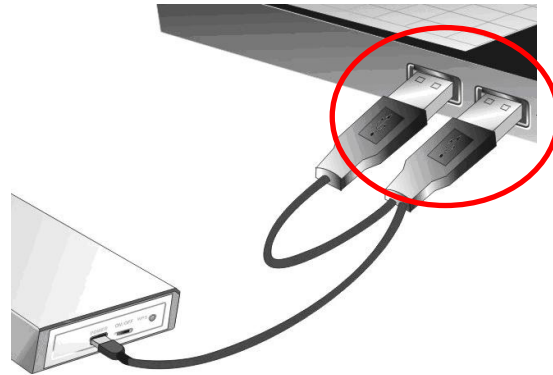
Connect the provided power adapter to the mini USB power jack and plug the other end into a wall outlet.



3.2 Use USB Cable:

Connect the provided USB cable to the mini USB power jack, and plug the other end to 2 USB ports of your PC or Laptop.

Note: Be sure to plug the 2 USB connectors into your computer in order to provide the sufficient power supply for router.



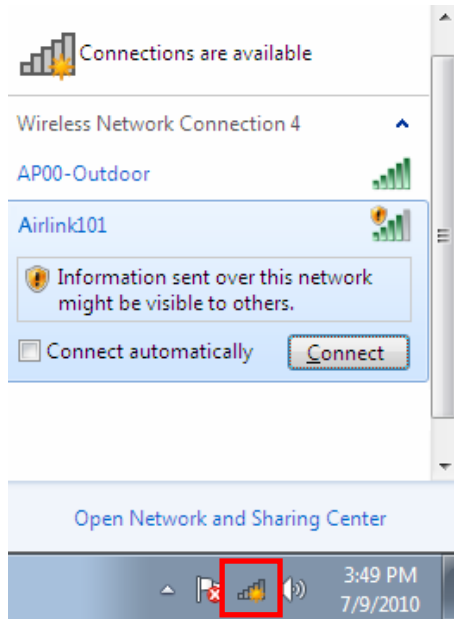
Step 4 Switch on the power of router.



Step 5 Connect to the Router from your Laptop/PC by Wireless. The default SSID is "Airlink101".

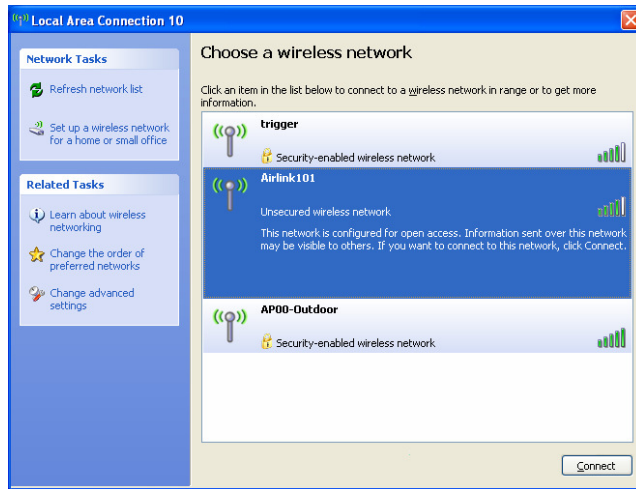
**Windows 7 / Vista
Users:**

Click on the wireless icon on the system tray, select '**Airlink101**' from the available wireless networks, and click on **Connect**.



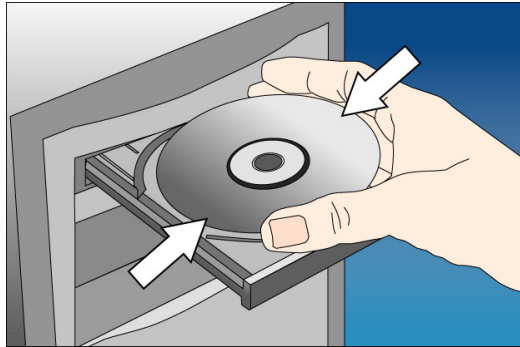
**Windows XP
Users:**

Right click on the wireless icon on the system tray, and go to **View Available Wireless Network**, select '**Airlink101**' and click on **Connect**.



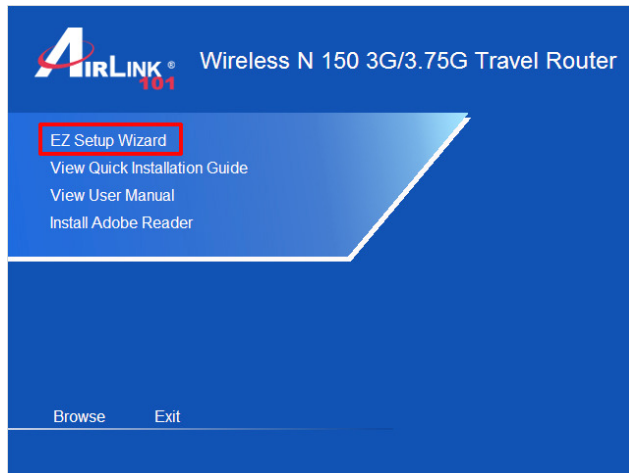
Step 6 Insert the Setup CD into your CD-ROM drive. The Autorun screen will pop up.

If the autorun screen does not come up properly, go to **My Computer** → Explore the **CD Drive** → go to **EZWizard** folder, then run **EZWizard.exe**. You can skip Step 7 and go to Step 8.

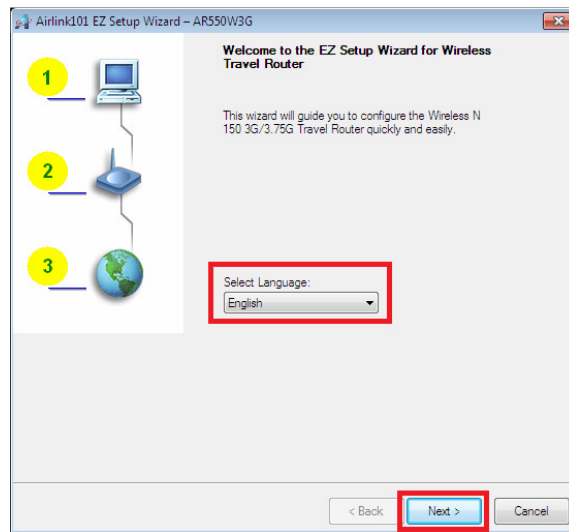


Windows 7 / Vista Users: When you get warning message(s), make sure that you **give permission** to run the software.

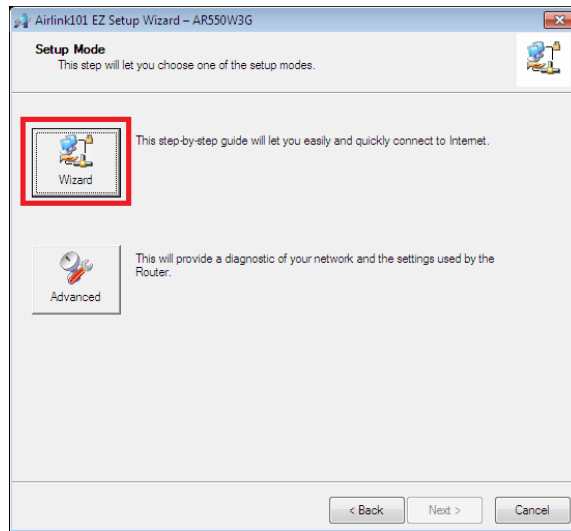
Step 7 Click on EZ Setup Wizard from the menu.



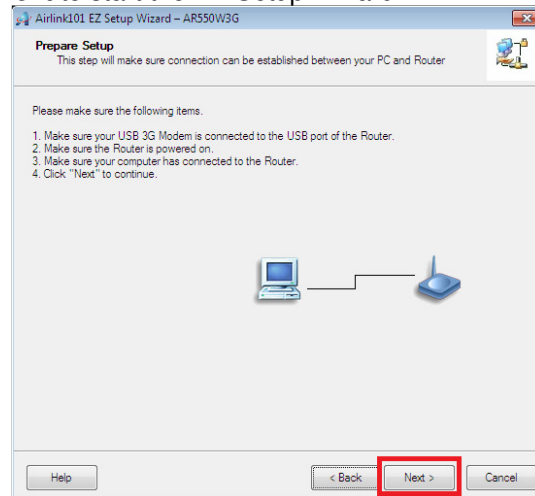
Step 8 Select language then click “Next” to continue.



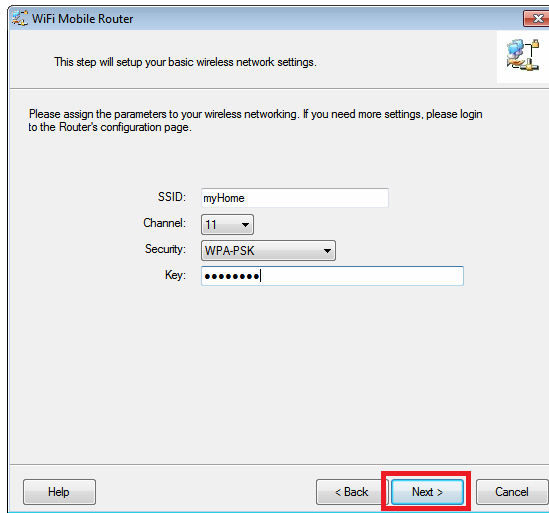
Step 9 Click on **Wizard**.



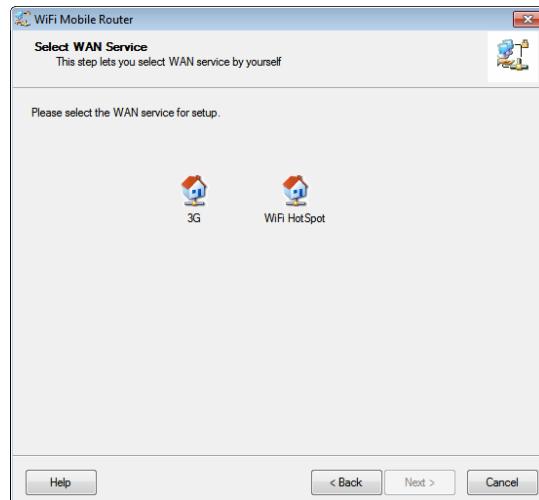
Step 10 Click **Next** to start the EZ Setup Wizard.



Step 11 Configure the SSID (wireless network name, i.e. myHome), Channel, Security mode and Key for this router. It is suggested to select **WPA2-PSK** for best wireless security. Enter 8~63 characters into Key. Write down the SSID and key for later use in Step 15. Click **Next**.



Step 12 Select the WAN Status. If you are connecting your 3G USB modem to the router, please click on **3G**. Click **Next**.



Step 13 Select Auto-Detection and let the wizard detect your 3G router's setting automatically or select Manual and enter the 3G settings below. Click **Next**.

Airlink101 EZ Setup Wizard – AR550W3G

WAN Setting
3G Service

Please input the WAN service information.

Dial-Up profile
 Auto-Detection Manual

Country: USA
Telecom: Verizon
3G_Network: CDMA2000/EV-DO
APN: (Optional)
PIN Code: (Optional)
Dialed Number: #777
Username: (Optional)
Password: (Optional)

Help < Back Next > Cancel

Step 14 Verify the settings you have configured. Click **Next** to save the settings and reboot the router. This will take about 30 seconds.

Airlink101 EZ Setup Wizard – AR550W3G

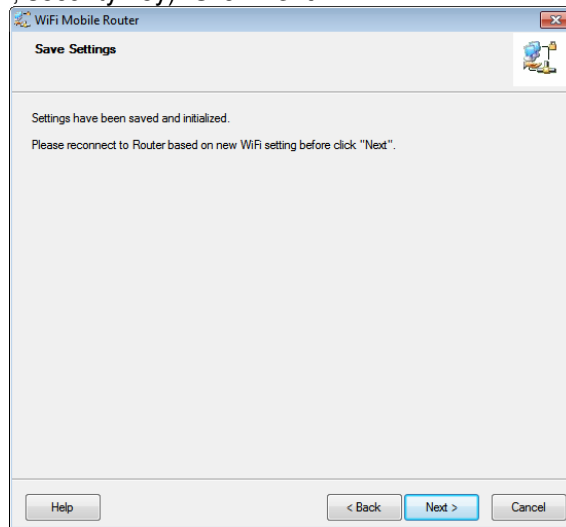
Save Settings

The settings will be saved to the Router and reboot at the next step.

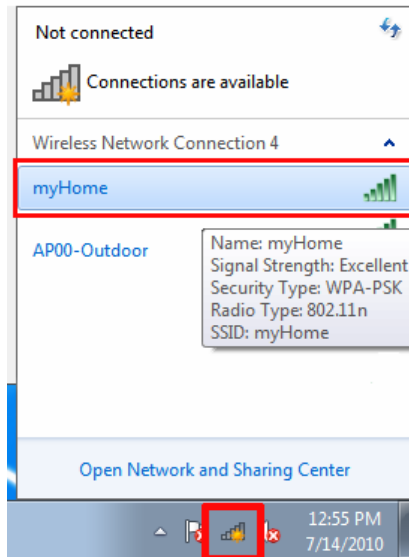
SSID: Airlink 101-550
Channel: 6
Security: WPA2-PSK
WAN Setting (3G Service)
Country: USA
Telecom: Verizon
3G_Network: CDMA2000/EV-DO
APN:
PIN Code:
Dialed Number: #777
Username:
Password:

Help < Back Next > Cancel

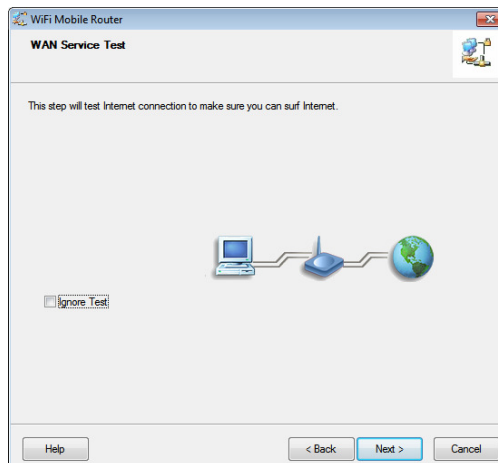
Step 15 Reconnect to the router from your wireless computer with the new settings (SSID, security key). Click **Next**.



Note: Make sure your wireless computer is connected back to the Router with the new SSID and Security Key.

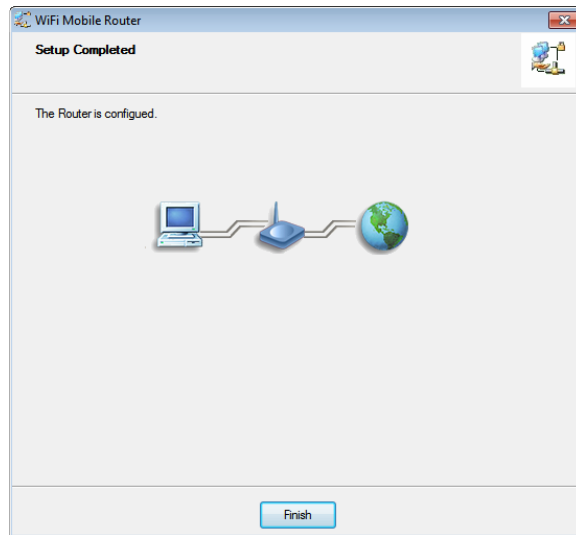


Step 16 Click **Next** to test the Internet Connection, or you can ignore the test, just open the Internet browser and verify if you are connected to the Internet.



If you cannot connect to the Internet, please go to **Section 3, Troubleshooting**.

Step 17 Click **Finish**.



Congratulations! Your router configuration has been finished.

Section 3

Troubleshooting

If you cannot connect to the Internet, please try the solutions below:

- A. The Router failed to detect your 3G connection settings automatically.**

The device might not be able to recognize your ISP automatically. Please select "Manual" mode at **Step 13**, and fill in dial-up settings manually.
- B. The 3G connection service is failed.**

Please check the following items:

 - I. Make sure you can connect to the Internet with the 3G USB modem directly plugged into your computer.
 - II. Verify with your ISP that all 3G settings (PIN, APN, Dial number, Username, and Password) you entered into the router are correct.
 - III. Make sure 3G signal from your ISP is available in your environment
- C. The Router can't recognize the 3G USB modem.**

There might be compatibility issue with some certain 3G cards. Please check the latest compatibility list on www.airlink101.com to see if your 3G card is already supported.
- D. Your wireless computer is not connected to the Router.**
 - I. Please make sure your computer is connected the Router with the correct security key at **Step 15**.
 - II. Please make sure your computer supports the Security mode (WPA2-PSK/WPA-PSK/WEP) you configured for the Router. Your computer might not support WPA2-PSK or WPA-PSK; you can change the Security mode to WEP and configure a 10-digit HEX key (0~9, a~f).

Section 4

Technical Support

E-mail: support@airlink101.com

Toll Free: 1-888-746-3238

Website: www.airlink101.com

*Theoretical maximum wireless signal rate derived from IEEE standard 802.11 specifications. Actual data throughput will vary. Network conditions and environmental factors, including volume of network traffic, building materials and construction, mix of wireless products used, radio frequency interference (e.g., cordless telephones and microwaves) as well as network overhead lower actual data throughput rate. Compatibility with 802.11n devices from other manufacturers is not guaranteed. Specifications are subject to change without notice. Photo of product may not reflect actual content. All products and trademarks are the property of their respective owners. Copyright© 2010 Airlink101®