



Quick Installation Guide

802.11g Wireless PCI Adapter

Model # AWLH3026T



Package Content:

- Wireless PCI Adapter
- Driver & Utility CD
- Quick Installation Guide

Ver. 1A

Step 2 Windows will launch the **Found New Hardware Wizard**. The wizard appears differently depending on your operating system. Click **Cancel** to quit the wizard and insert the Driver & Utility CD into your CD drive.



Section 1

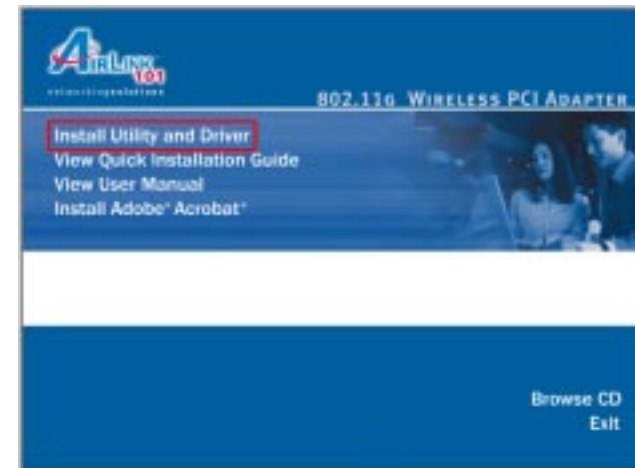
Install Driver & Utility

This Quick Installation Guide only provides the basic instructions. For more advanced features such as configuring encryption settings, please refer to the User's Manual in the provided CD.

Note: Be sure to power off your computer before inserting the PCI adapter. For Windows 98SE and ME users, you may be prompted to insert the Windows 98SE or ME CD during the driver installation. Be sure to have your Windows 98SE or ME CD ready.

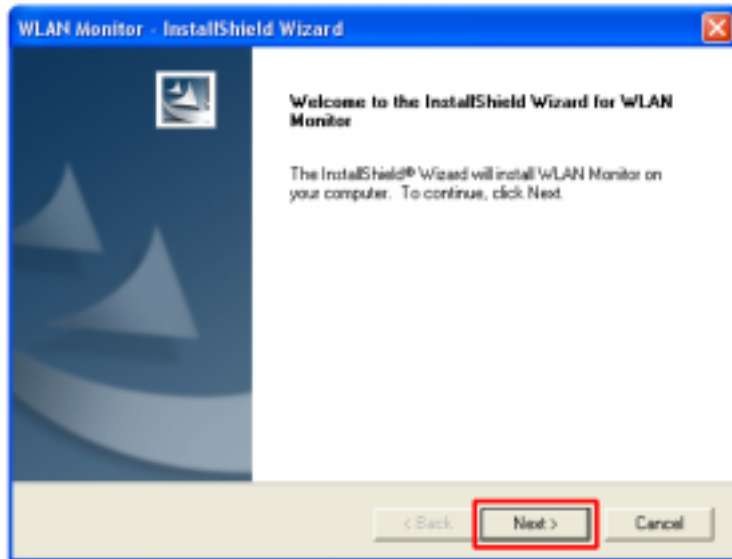
Step 1 Insert the PCI adapter into an available PCI slot and turn on your computer.

Step 3 The Autorun screen will appear. Select **Install Utility and Driver** from the menu.

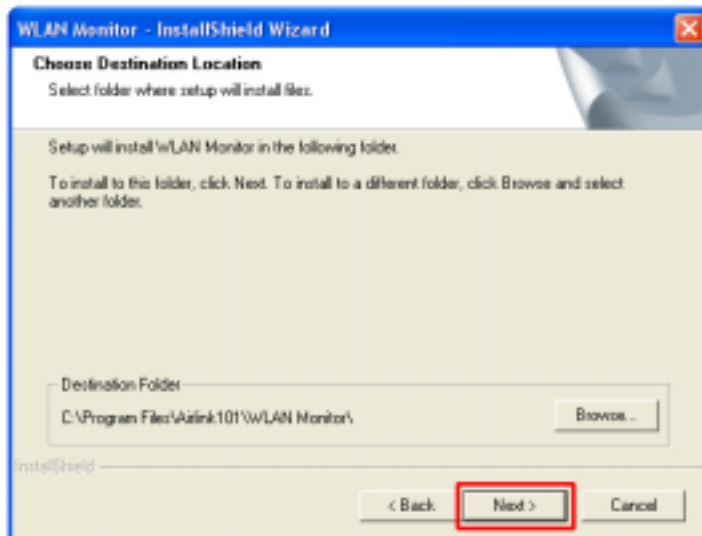


Note: If the Autorun screen doesn't appear automatically go to **Start, Run,** and type **D:\utility\setup.exe** (where **D** is the letter of your CD drive) and click **OK**.

Step 4 Click **Next** at the welcome screen.

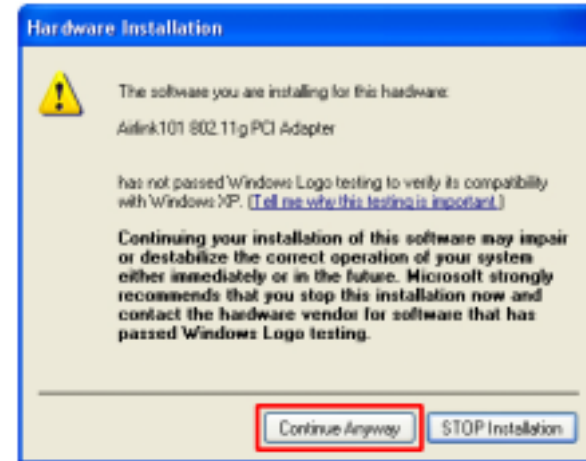


Step 5 Click **Next** to accept the default destination folder.

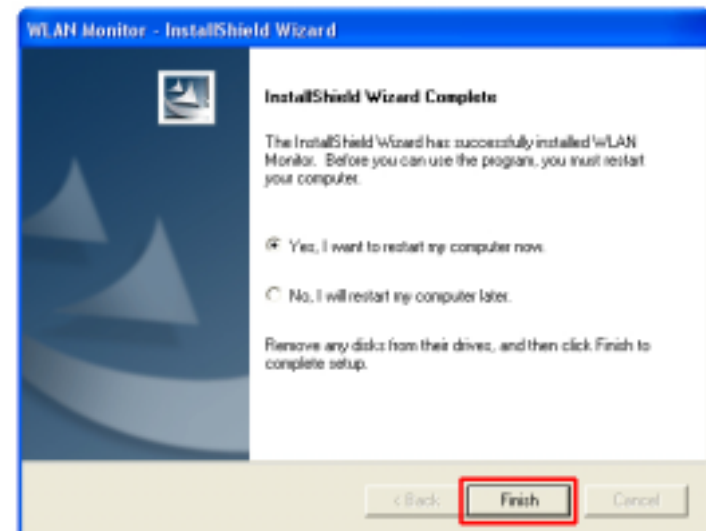


Step 6 Click **Next** to accept the default program folder.

Step 7 Click **Continue Anyway** at the Windows Logo Screen. (For Windows 2000, click **Yes** at the Digital Signature Not Found prompt).



Step 8 Verify **Yes, I want to restart my computer now** is selected and click **Finish** to restart your computer.



Continue on Back



Section 2

Configure the Wireless PCI Adapter

Note to Windows XP Users:

You must disable the Wireless Zero Configuration Utility in order to use the WLAN Monitor. Please refer to the following steps to disable the Wireless Zero Configuration Utility.

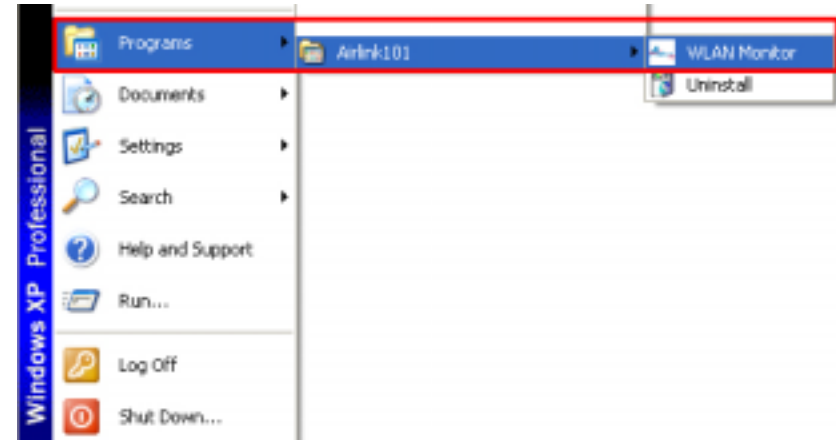
Step 1 Double-click on the **Wireless Network Connection Icon** in the system tray and then click on **Change advanced settings** under **Related Tasks**.



Step 2 Go to the **Wireless Networks** tab, verify the “**Use Windows to configure my wireless network settings**” box is unchecked and click **OK**.

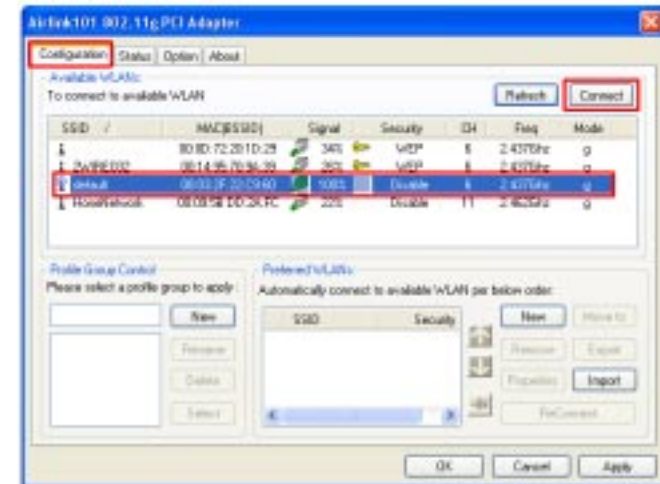


To open the Wireless PCI Adapter's utility go to **Start > (All) Programs > Airlink101 > WLAN Monitor**.



Note: The utility automatically adds an available wireless network to the **Preferred WLANs** box. If no SSID is added, or if the SSID is wrong, please refer to the following steps to join the appropriate wireless network. Be sure to remove the wrong SSID from the **Preferred WLANs** box before adding any new SSID. You can remove the wrong SSID by selecting it and clicking on **Remove**.

Step 1 Select the SSID of the wireless network you wish to connect to from the **Available WLANs** box and click **Connect**.



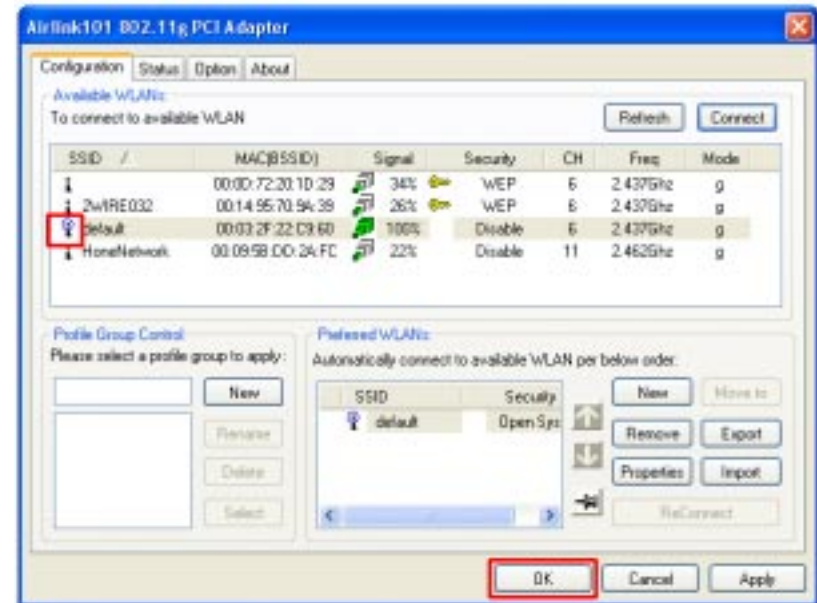
Step 2 If you are connecting to an unsecured wireless network, a caution message will appear. Click **OK** to exit the message.



Step 3 Verify the SSID you have selected is in the **Preferred WLANs** box and click **Apply**.



Step 4 A blue circle appears indicating a connection is established. Click **OK**.



Note: In some cases, you may need to restart your computer to complete the wireless connection.

Section 3

Technical Support

E-mail: support@airlink101.com

Toll Free: 1-888-746-3238

Web Site: www.airlink101.com

*Theoretical maximum wireless signal rate based on IEEE standard 802.11g specifications. Actual data throughput will vary. Network conditions and environmental factors, including volume of network traffic, building materials and construction, mix of wireless products used, radio frequency interference (e.g., cordless telephones and microwaves) as well as network overhead lower actual data throughput rate. Specifications are subject to change without notice. All products and trademarks are the property of their respective owners. Copyright©2006 AirLink101™