



Quick Installation Guide

802.11g Wireless PCI Adapter

Model # AWLH3028



Package Content:

- Wireless PCI Adapter
- Driver & Utility CD
- Quick Installation Guide

Section 1

Install Utility Software

This Quick Installation Guide only provides the basic instructions. For more advanced features such as configuring encryption settings, please refer to the User's Manual on the provided CD.

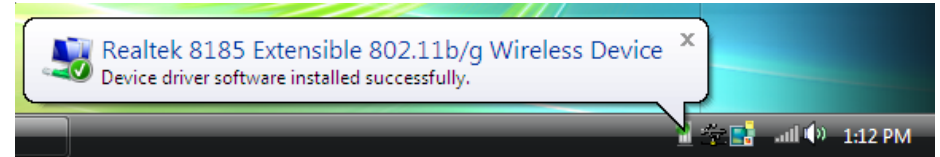
Note: Be sure to power off your computer before inserting the PCI adapter.

Insert the PCI adapter into an available PCI slot and turn on your computer.

Windows 2000/XP Users: After turning on the computer, Windows will launch the **Found New Hardware Wizard**. The Found New Hardware Wizard appears differently depending on your operating system. Click **Cancel** to quit the wizard and insert the Installation CD into your CD drive Skip ahead to **Step 1**.

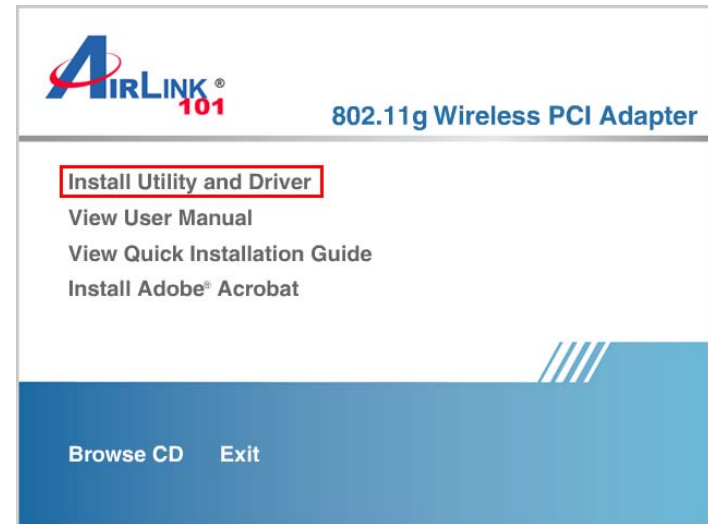
Rev. 1.2

Windows Vista Users: After turning on the computer, Windows will install its built in driver for this card. A popup window will appear telling you that the driver was installed correctly.



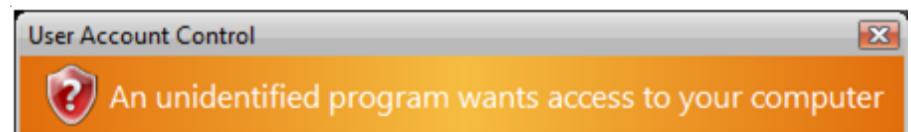
Once you see this message, insert the installation CD and continue to Step 1.

Step 1 The Autorun screen will pop up. Select **Install Driver and Utility** from the menu.

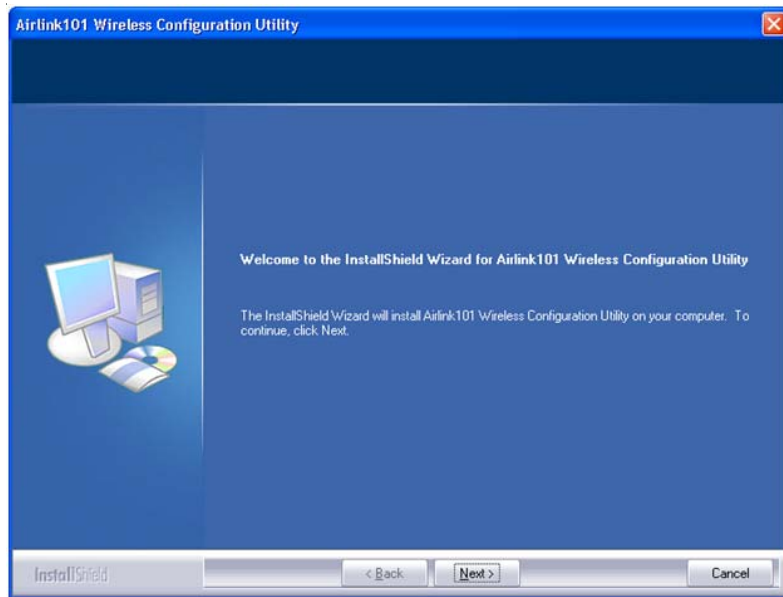


Note: If the Autorun screen doesn't appear automatically go to **Start, Run,** and type **D:\Utility\Setup.exe** (where **D** is the letter of your CD drive) and click **OK**.

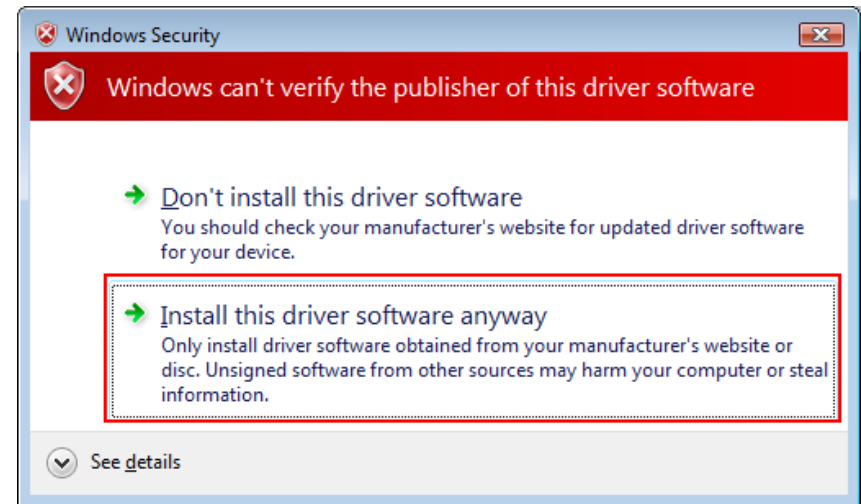
Windows Vista Users: At this point, you may get a warning message like the one below. Make sure that you click "Allow" to continue with the installation.



Step 2 Click **Next** at the welcome screen.



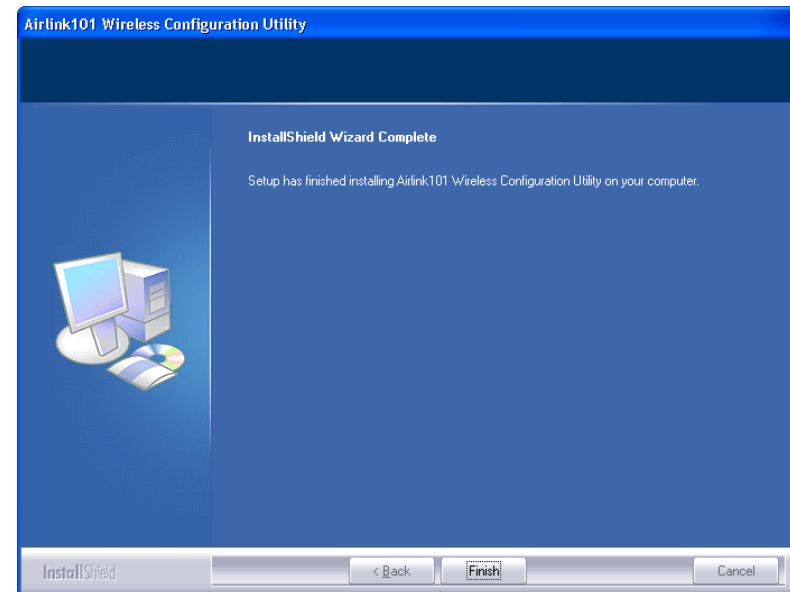
Windows Vista Users: When the Windows Security box appears, click **Install this driver software anyway**.



Windows 2000/XP Users: Click **Continue Anyway** at the Windows Logo Screen. (For Windows 2000, click **Yes** at the Digital Signature Not Found prompt).



Step 3 Click **Finish** to complete the installation.



Section 2

Configuring the Wireless Adapter

Windows Vista Users: For instructions on using Windows Vista's built in utility, please skip ahead.

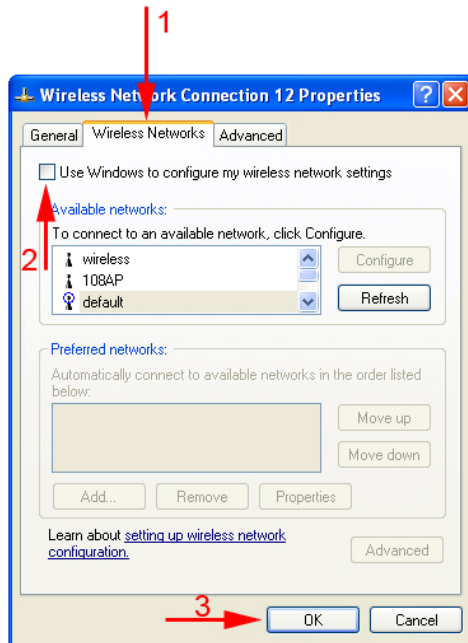
Windows XP Users:

You must disable the Wireless Zero Configuration Utility. Please follow the steps below to disable XP's wireless utility.

Double-click on the **Wireless Network Connection Icon** in the system tray and then click on **Properties** or **Advanced**.



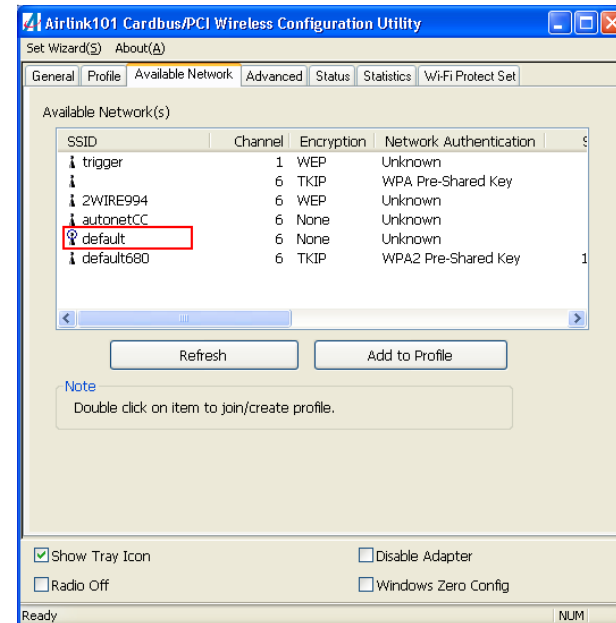
When the new wireless network connection properties window appears, go to the **Wireless Networks** tab, uncheck the **Use Windows to configure my wireless network settings** check box and click **OK**.



To open the utility, double click on the Wireless Configuration Utility icon in the system tray at the bottom right-hand corner of your screen.

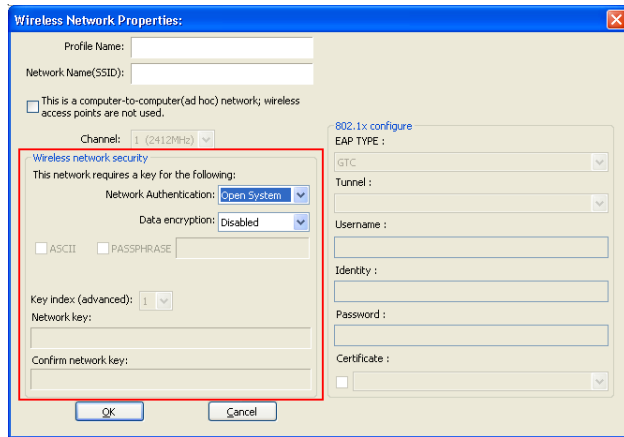


Go to the **Available Network** tab, select the **SSID** (Network Name) of the wireless network you wish to connect to, and click **Add to Profile**.



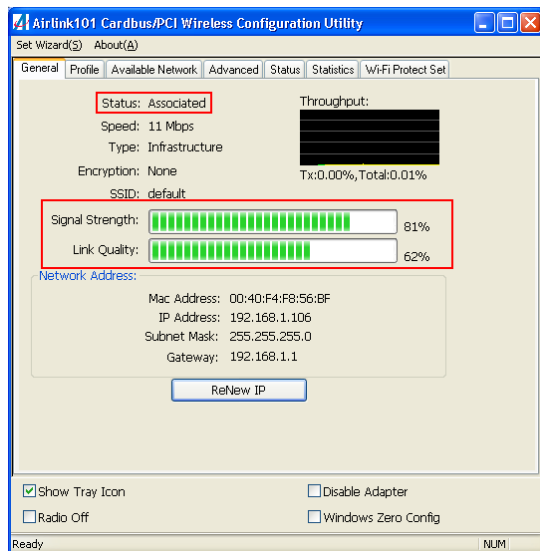
If the network you are attempting to connect to does not have encryption enabled, you will receive a warning about connecting to an unsecured network. Click OK to complete the connection.

If the network you are attempting to connect to is configured for encryption, the following window will appear:

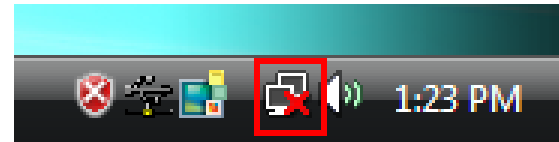


Enter the encryption settings for the network and click OK to complete the connection.

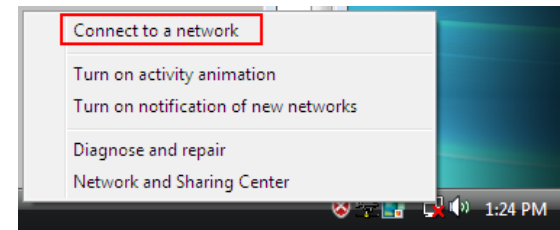
You should now be connected. Click on the general tab to check the status of your connection. It should say **Associated** next to status, and there should be green bars next to **Signal Strength** and **Link Quality**.



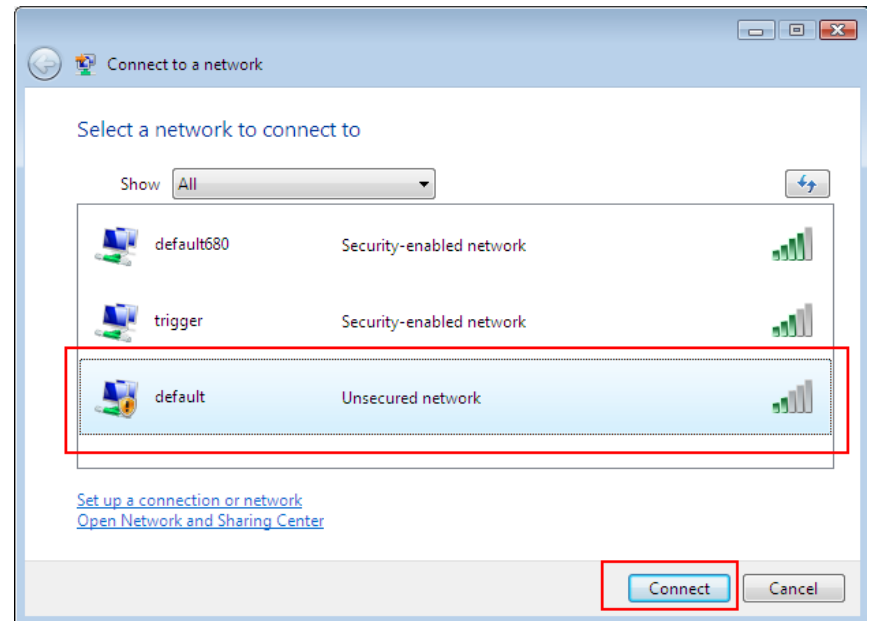
Windows Vista Users: To connect to a network using the Windows Vista utility, right click on the networking icon down in the bottom right hand corner.



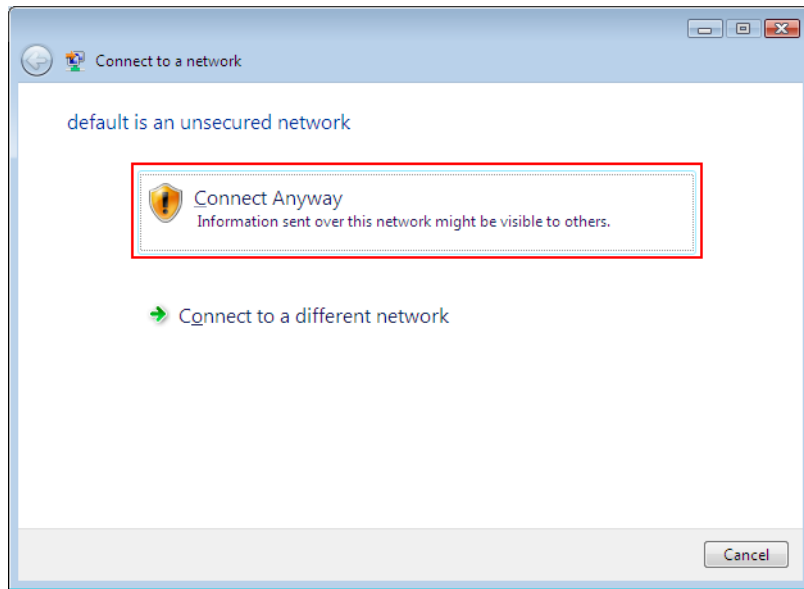
Then click on **Connect to a network**.



Select your network from the list and click **Connect**.

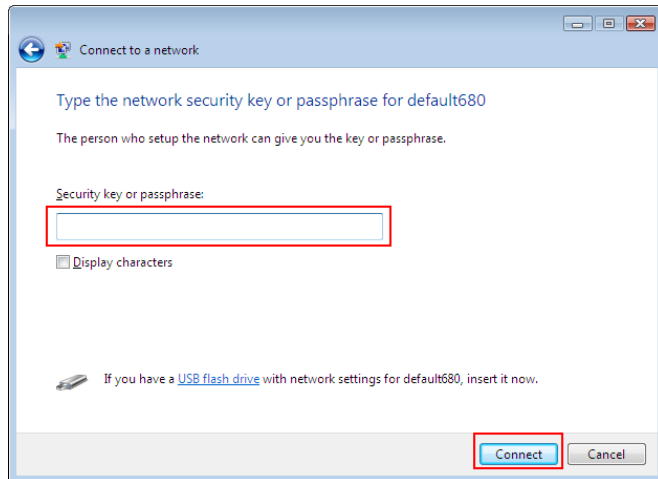


If the network you are connecting to does not have encryption enabled, you will see the following warning:



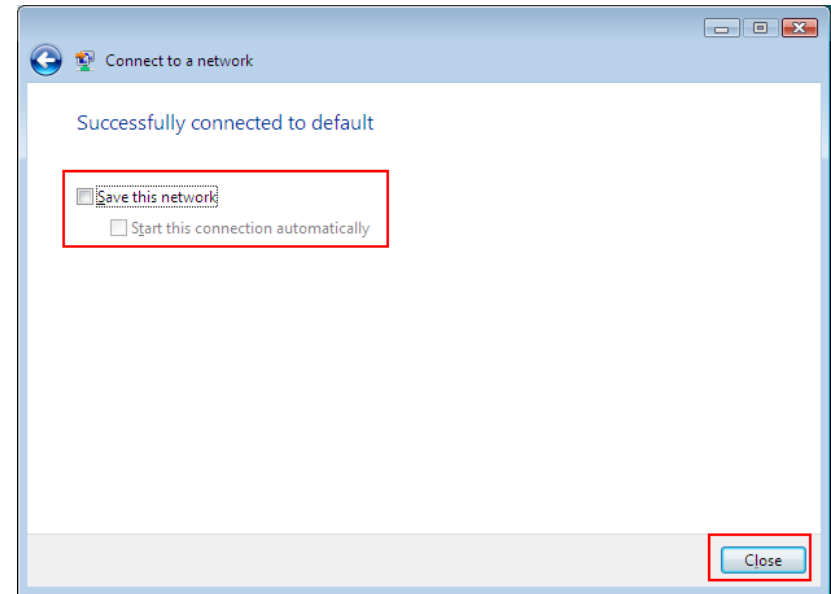
Click **Connect Anyway** to connect to the network.

If the network you are attempting to connect to has encryption enabled, a box will appear asking you to enter your encryption key.



Enter your encryption key into the box and click **Connect** to establish a connection. If you do not know what your encryption key is, contact your router manufacturer for assistance.

You should now be connected to your network.



To save the connection settings so that you don't have to go through the connection setup process each time you start your computer, check the boxes for **Save this network** and **Start this connection automatically**, then click **Close** to complete the setup.

Troubleshooting: If you are experiencing problems with the connection (unable to connect, low signal strength, slow connection speed, not working, unstable wireless connection) you will want to tune your router's signal by adjusting the angle of the antenna or changing channels on the router.

You do not need to change the channel on the card, it will automatically pick up the new channel after you reboot. The only channel that you need to change is the router's channel.

Your router has 11 different channels to choose from. Start with channel 1 and work your way up. Each time you change the channel on the router, make sure that you restart the wireless computer before trying to connect again. Keep going through the channels until you find one that gives you a stable connection.

For instructions on changing channels, refer to the documentation that came with your router.

For instructions on configuring and connecting to a router with **Wi-Fi Protected Setup (WPS)**, Please refer to **Section 4.7** of the User Manual Located on the CD. The adapter can only use Wi-Fi Protected Setup with routers that support Wi-Fi Protected Setup.

Section 3

Technical Support

E-mail: support@airlink101.com

Toll Free: 1-888-746-3238

Web Site: www.airlink101.com

*Theoretical maximum wireless signal rate based on IEEE standard 802.11g specifications. Actual data throughput will vary. Network conditions and environmental factors, including volume of network traffic, building materials and construction, mix of wireless products used, radio frequency interference (e.g., cordless telephones and microwaves) as well as network overhead lower actual data throughput rate. Specifications are subject to change without notice. All products and trademarks are the property of their respective owners. Copyright ©2007 Airlink101®