



Quick Installation Guide

802.11g USB Adapter with +10dBi Antenna

Model # AWLL3055



Package Contents:

- USB 2.0 Adapter
- Driver & Utility CD
- Quick Installation Guide



Section 1

Install Driver & Utility

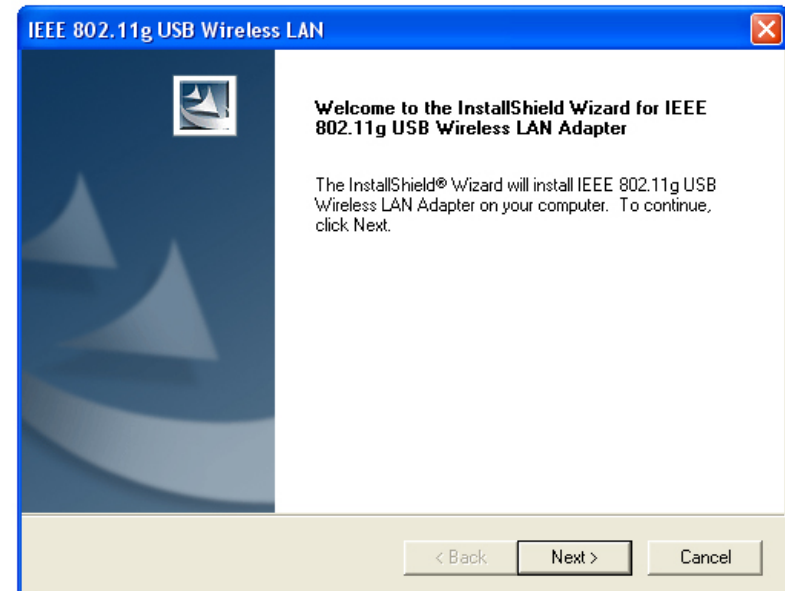
Note: Before installing the utility software, **DO NOT** insert the USB adapter into your computer. If the adapter is inserted already, Windows will detect the adapter and request for a driver. Click **Cancel** to quit the wizard and remove the adapter from your computer.

Step 1 Insert the provided Driver and Utility CD into your CD drive.

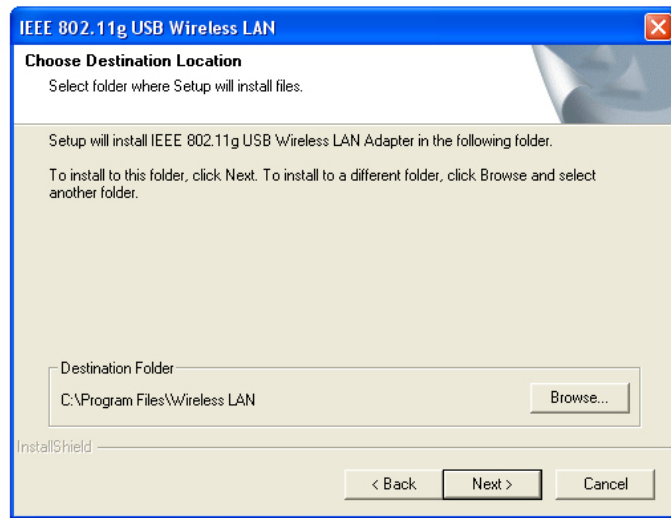
Step 2 Click **Install Driver and Utility** from the autorun window.

Note: If the autorun window doesn't appear automatically go to **Start, Run**, and type **D:\Utility\Setup.exe** (where **D** is the letter of your CD drive) and click **OK**.

Step 3 Click **Next** at the welcome screen.



Step 4 Click **Next** to accept the default destination location for the driver to be installed in or click **Browse** to select the desired location.



Step 5 For Windows XP, click **Continue Anyway** at the Windows Logo Compatibility screen.



For Windows 2000, click **Yes** at the Digital Signature screen.

Step 6 Remove the Driver & Utility CD from your CD drive and then restart your computer.

Section 2

Install Driver

Note: In most cases, Windows will automatically install the driver after the computer is restarted. If the Found New Hardware Wizard appears, follow the instructions below. The Found New Hardware Wizard will look different depending on your operating system. Follow the on-screen instructions to complete the installation. For Windows 98SE and ME users, you may be prompted to insert the Windows 98SE or ME CD during the driver installation. Be sure to have your Windows 98SE or ME CD ready.

Step 1 After the computer is restarted, insert the USB adapter into the USB port of the computer. If there is not enough room to insert the adapter directly to the USB port, you may use the supplied USB extension cable for more space.

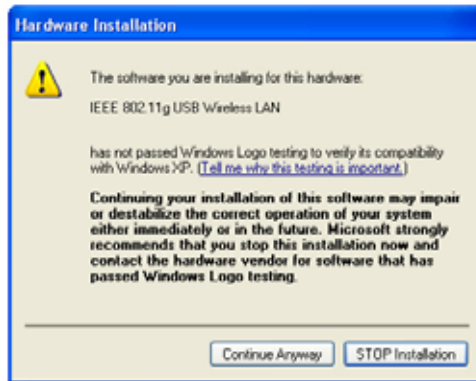
Step 2 Select **Install the software automatically** and click **Next**.



Continue on Back



Step 3 For Windows XP, click **Continue Anyway** at the Windows Logo Compatibility screen.



For Windows 2000, click **Yes** at the Digital Signature screen.

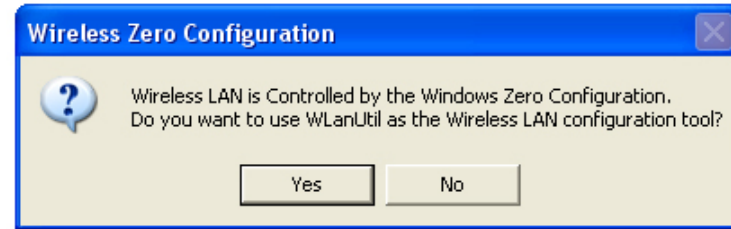


For Windows 98SE or ME, insert the Windows 98SE or ME CD if prompted to do so and click **OK**.

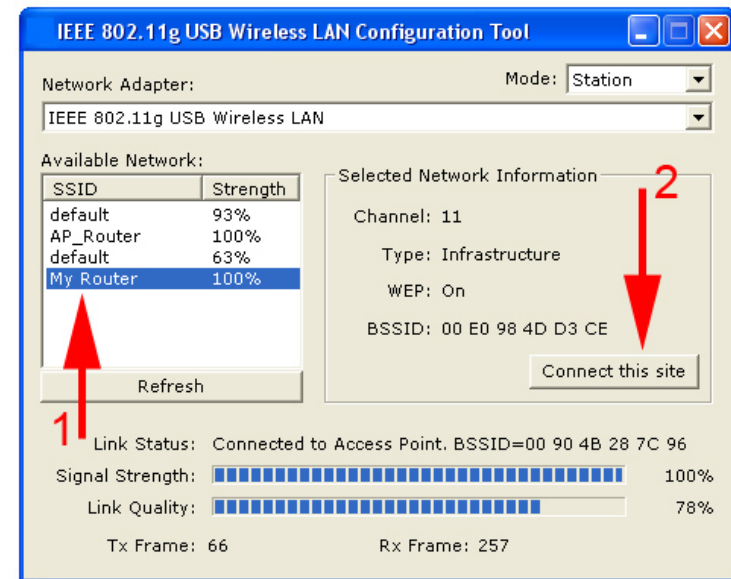
Step 4 Click **Finish**. Restart the computer if you are prompted to do so.

Note to Windows XP Users:

If you encounter the Wireless Zero Configuration dialog box, click **Yes** to enable the Wireless LAN Utility to configure your USB adapter.



Step 1 Select the **SSID** of your wireless router/access point from the Available Network list and click on the **Connect this site** button.



Step 2 Verify that the adapter has adequate **Signal Strength** and **Link Quality** and then restart the computer.

You have completed the configuration.

Section 3

Configuring the USB Adapter

To open the utility, go to **Start, (All) Programs, IEEE 802.11g USB Wireless LAN Adapter, IEEE 802.11g USB Wireless LAN Utility**.

Section 4

Troubleshooting

A If the utility cannot be opened or it reports that the adapter is not found, uninstall the driver and utility and try installing again. You can also verify if the driver is installed properly in the Device Manager. For instructions on how to access the Device Manager, please refer to the User's Manual on the provided CD.

B If you do not see your wireless router/access point in the Available Network list, reset your wireless router/access point and click on **Refresh**.

C If WEP is ON, it means that the wireless router/access point has encryption enabled. Be sure to set the identical encryption settings on the USB adapter's utility as well. Please see the user manual for help on setting up the WEP security.

D If the adapter has adequate signal strength and link quality, but cannot access the Internet, verify that you are able to obtain an IP address from your wireless router/access point.

For Windows 98SE/ME

Step 1 Go to **Start, Run**, type **winipcfg** and click **OK**.

Step 2 Select the adapter from the drop-down menu and click **Release**.

Step 3 After the IP address is released, click **Renew**. You should get an IP address like **192.168.x.y** (where **x** and **y** are unique numbers assigned by your wireless router/access point). If you don't get an IP address, reset the wireless router/access point and then try **Renew** again.

For Windows 2000/XP

Step 1 Go to **Start, Run**, type **cmd** and click **OK**.

Step 2 At the command prompt, type **ipconfig/release** and press **Enter**.

Step 3 After the IP address is released, type **ipconfig/renew** and press **Enter**. You should get an IP address like **192.168.x.y** (where **x** and **y** are unique numbers assigned by your wireless router/access point). If you don't get an IP address, reset the wireless router/access point and then try **ipconfig/renew** again.

E You must have USB 2.0 compatible hardware and install the latest USB 2.0 driver from Microsoft in order to reach the maximum possible transfer rate.

For more advanced features and additional details, please refer to the User's Manual on the provided CD.

Section 5

Technical Support

E-mail: support@airlink101.com

Toll Free: 1-888-746-3238

Web Site: www.airlink101.com

*Theoretical maximum wireless signal rate based on IEEE standard 802.11g specifications. Actual data throughput will vary. Network conditions and environmental factors, including volume of network traffic, building materials and construction, mix of wireless products used, radio frequency interference (e.g., cordless telephones and microwaves) as well as network overhead lower actual data throughput rate.

Copyright © 2006 AirLink101. All rights reserved. AirLink101, the stylized AirLink101 logo, specific product designations, and all other words and logos that are identified as trademarks and/or service marks are, unless noted otherwise, the trademarks and service marks of AirLink101. All other product or service names are the property of their respective holders. AirLink101 products are protected under numerous U.S. and foreign patents and pending applications, mask work rights, and copyrights.