

Quick Installation Guide

Wireless N 150 High Power USB Adapter With 5dBi High Gain Antenna

Model # AWLL5166HP



Package Contents:

- Wireless N 150 High Power USB Adapter
- 5dBi High Gain Antenna
- Driver & Utility CD
- Quick Installation Guide

Section 1

Install the Wireless USB Adapter

This Quick Installation Guide only provides the basic installation instructions. For detailed instructions of other advanced features, please refer to the User's Manual that can be found on the provided CD.

For Macintosh users, please install the driver before plugging in the USB adapter. You can find the drivers and installation instruction for MAC 10.4, 10.5, 10.6 under the **MAC** folder on the provided CD.

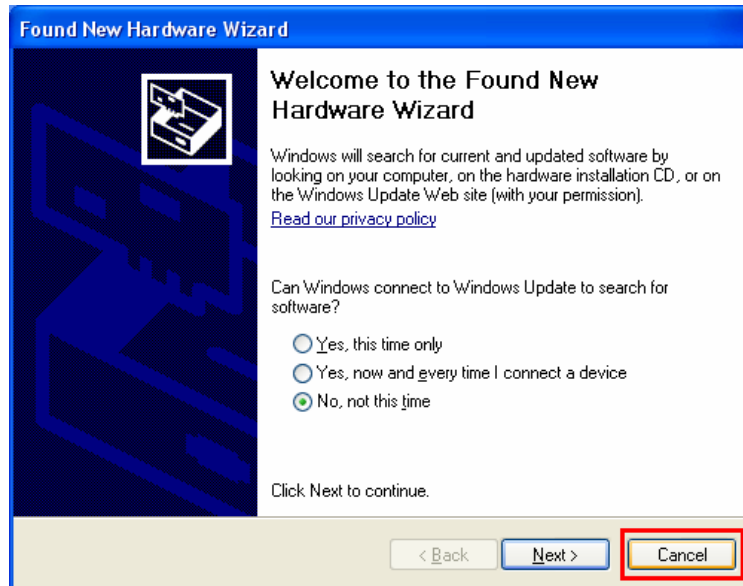
Step 1.1 Fasten the provided 5dBi antenna to the USB adapter.



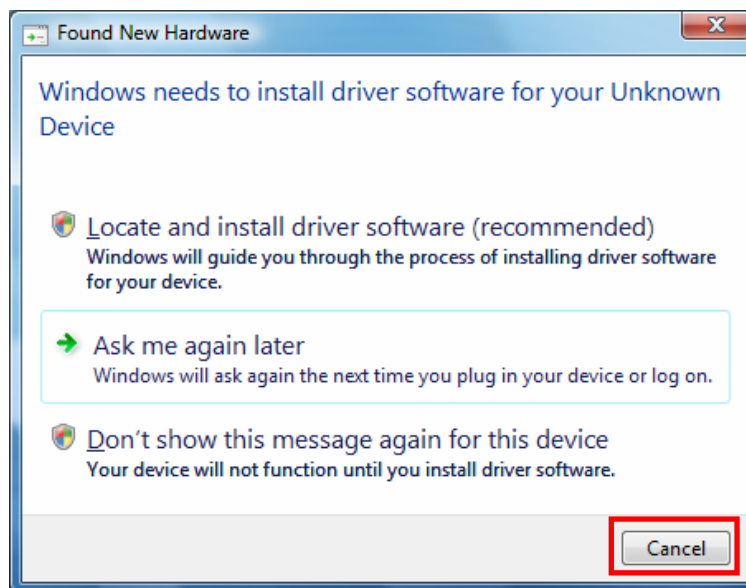
Step 1.2 Insert the USB adapter into an available USB port of your computer.

Step 1.3 Click **Cancel** when you see the **Found New Hardware Wizard**.

Windows XP/2000 Users:



Windows Vista Users:



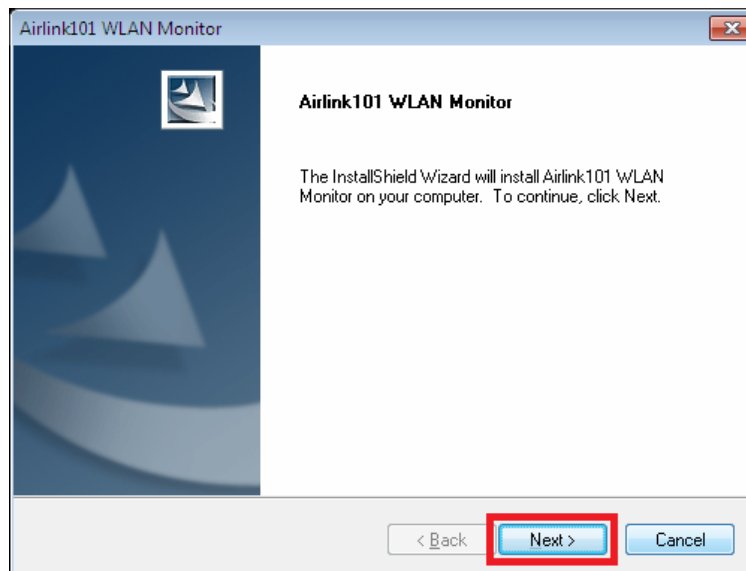
Step 1.4 Insert the Installation CD in the CD drive. The Autorun screen will pop up. Select **Install Utility and Driver** from the menu.



Note: If the Autorun screen doesn't appear automatically, go to **My Computer** → Explore the **CD Drive** → go to **Utility** folder, then run **Setup.exe**.

Windows 7/Vista Users: When you get warning message(s), make sure that you **give permission** to continue with the installation of the driver software.

Step 1.5 Click **Next** to start the installation.



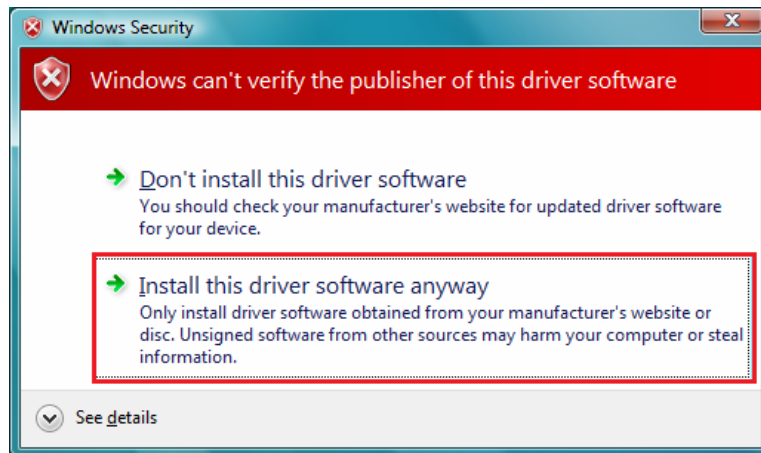
Step 1.6 Please wait when Windows is installing the driver for Airlink101 Wireless Adapter.



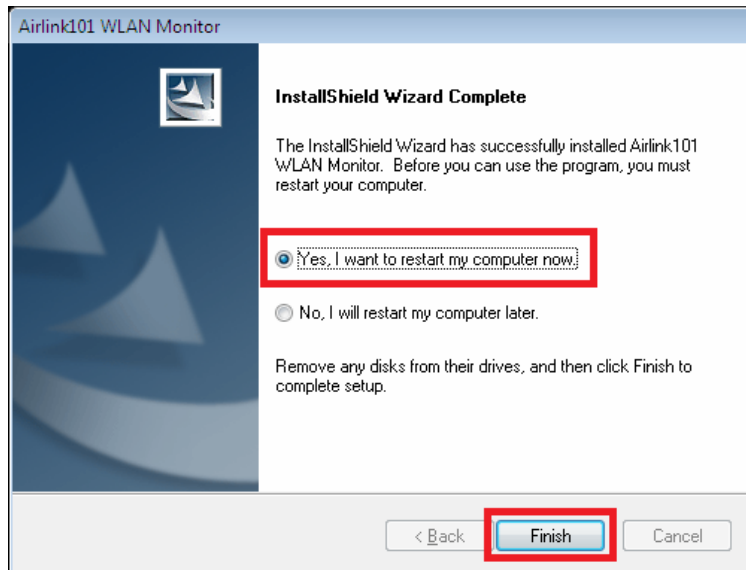
Step 1.7 Windows XP Users: click on **Continue Anyway**.



Windows 7/Vista Users: click on **Install this driver software anyway**.



Step 1.8 Select **Yes, I will restart my computer now**. Click **Finish** to complete the installation.



The driver and utility have been installed. Please continue to Section 2.

Section 2

Connect to Wireless Network

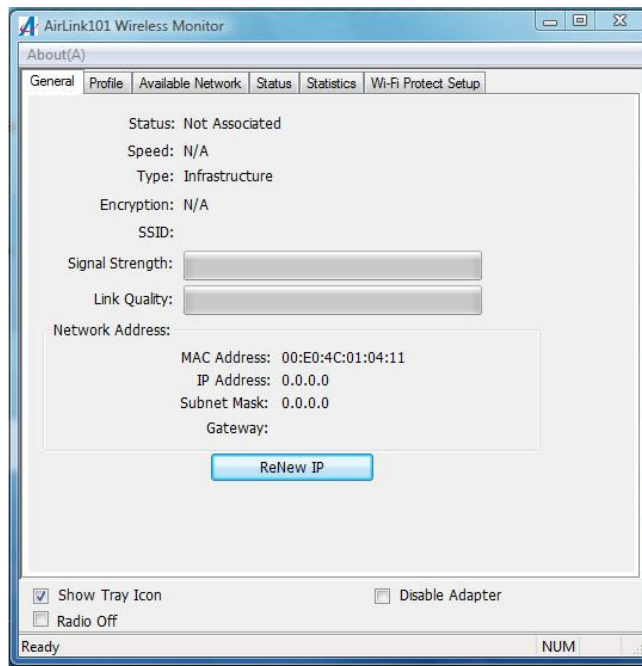
Step 2.1 Open the Airlink101 Wireless Monitor utility by double clicking on the icon in the system tray at the bottom right-hand corner of your screen.



Or you can double click on the Airlink101 Wireless Monitor icon on the desktop.



The Airlink101 Wireless Monitor will come up:



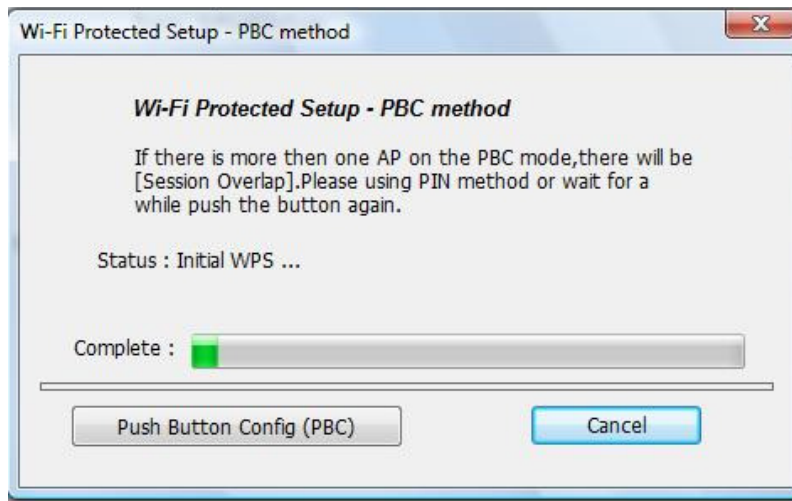
Step 2.2 (Optional)

The Easy Setup Button (Wi-Fi Protected Setup) is a new and easy way to configure the encryption for your wireless network clients. In order to use it, you need to have a router that supports this feature.

Note: If your router doesn't support Easy Setup Button function (Wi-Fi Protected Setup), please go to [Step 2.3](#).

1. Push the Easy Setup Button of the Adapter until you see the following window pops up on your computer monitor.





This window pops up to acknowledge you the wireless adapter is starting to establish a connection with the Router/AP.

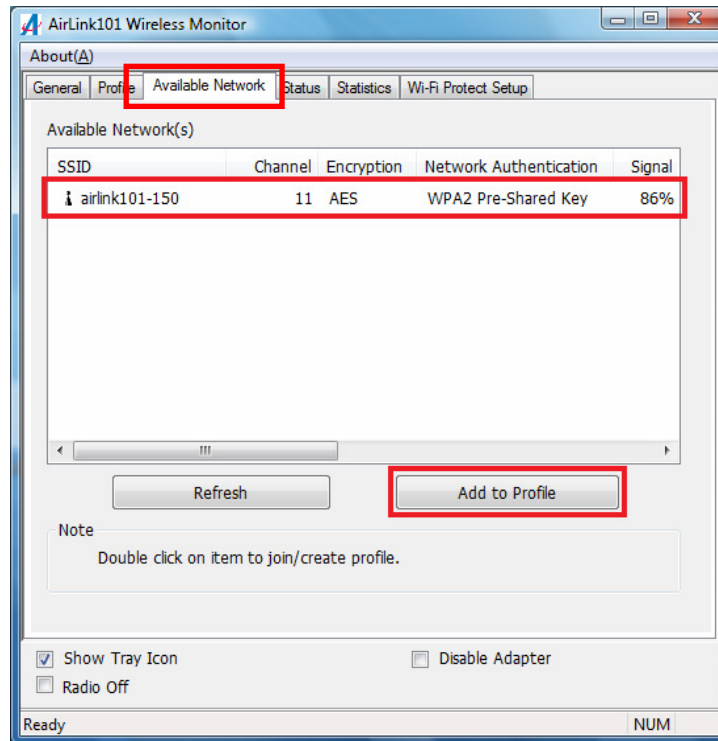
2. Within the following 2 minutes, push the Easy Setup Button (WPS Button) on the back of the Router. The picture shows Airlink101 AR570W Wireless N 150 Router.



3. The router will now start to synchronize the encryption settings with the wireless adapter. The connection will be established in few seconds. Continue to Step 2.5.

If the connection is unable to establish, continue to Step 2.3.

Step 2.3 Click the **Available Network** tab of the Wireless Monitor, select the wireless network that you wish to connect to, and click **Add to Profile**.



If the network that you are attempting to connect does not have encryption enabled, you will receive a warning about connecting to an unsecured network. Click **OK** to complete the connection. Go to **Step 2.5**.

Step 2.4 Enter the wireless security key into the **Network Key** and **Confirm Network Key** boxes. Click **OK**.

Wireless Network Properties:

This is a computer-to-computer(ad hoc) network; wireless access points are not used.

Profile Name: airlink101-150

Network Name(SSID): airlink101-150

Channel: 11 (2462MHz)

Wireless network security

This network requires a key for the following:

Network Authentication: WPA2-PSK

Data encryption: AES

ASCII PASSPHRASE

Key index (advanced): 1

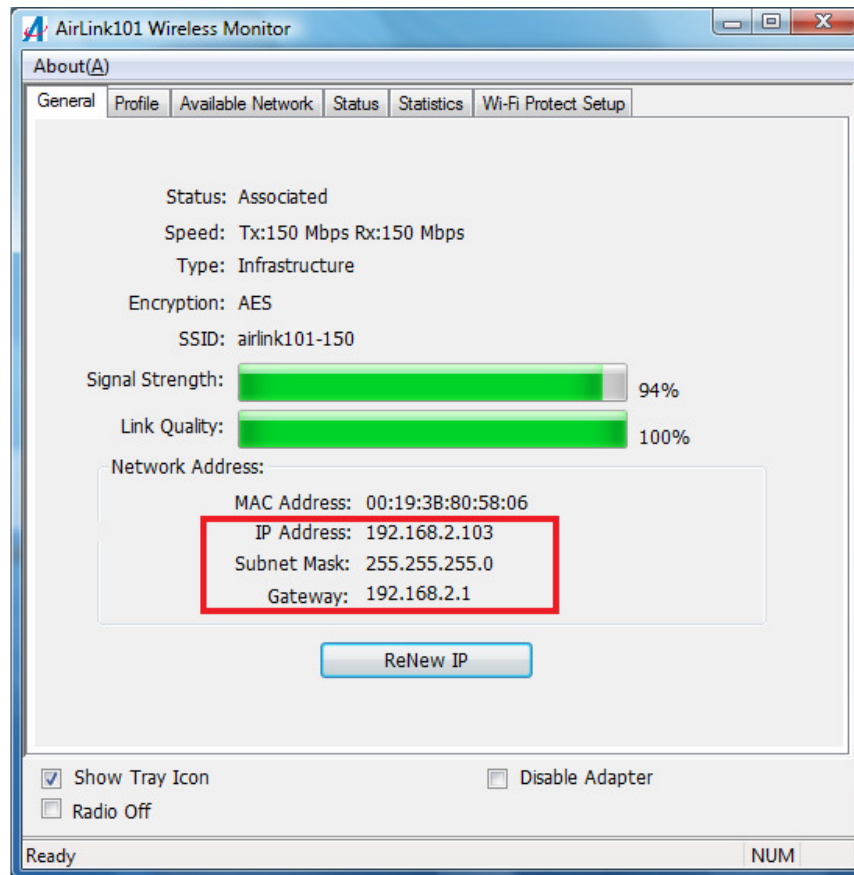
Network key:

Confirm network key:

OK Cancel

The wireless adapter will automatically detect the type of Network Authentication and the Data encryption. All you need to do is to enter the Network Key in the appropriate boxes according to the settings of the wireless router and click **OK** to connect.

Step 2.5 The connection should be now established. Under the utility AirLink101 Wireless Monitor, go to General tab to check the status of the connection. Verify that **IP Address**, **Subnet Mask** and **Gateway** have valid numbers assigned to them (instead of all 0's). The Status should be Associated, and there should be green bars next to Signal Strength and Link Quality.



Congratulations! You have now connected to the wireless network successfully.

Troubleshooting

1. If you cannot open the wireless monitor utility, make sure that the USB adapter is inserted firmly into the USB port.
2. If you cannot connect to the wireless router, you may want to double check the wireless security settings on the router. The network key you entered in Step 2.4 must match with the settings on the wireless router.
3. If you are experiencing problems with the connection such as low signal strength, slow connection speed, or unstable wireless connection, you can try to tune your router's signal by changing the channels on the router and/or by adjusting the direction of the antenna(s). You do not need to change the channel on the Adapter; it will automatically pick up the new channel after you reboot the router. Your router has 11 different channels to choose from. Keep going through the channels until you find one that gives you a stable connection. For instructions on changing channels, refer to the documentation that comes with the router.

Section 3

Technical Support

E-mail: support@airlink101.com

Toll Free: 1-888-746-3238

Website: www.airlink101.com

*Theoretical maximum wireless signal rate derived from IEEE standard 802.11 specifications. Actual data throughput will vary. Network conditions and environmental factors, including volume of network traffic, building materials and construction, mix of wireless products used, radio frequency interference (e.g., cordless telephones and microwaves) as well as network overhead lower actual data throughput rate. Compatibility with draft 802.11n devices from other manufactures is not guaranteed. Specifications are subject to change without notice. Photo of product may not reflect actual content. All products and trademarks are the property of their respective owners.
Copyright ©2011 Airlink101®