



Ver. 2.0

Quick Installation Guide

Wireless N 300 USB Adapter

Model # AWLL6077v2



Package Contents:

- Wireless N 300 USB Adapter
- Driver & Utility CD
- Quick Installation Guide

Section 1

Install the Wireless USB Adapter

This Quick Installation Guide only provides the basic installation instructions. For detailed instructions of other advanced features, please refer to the User's Manual that can be found on the provided CD.

For Macintosh users, you can find the software and installation instructions for MAC 10.4, 10.5, 10.6 under the **MAC** folder on the provided CD.

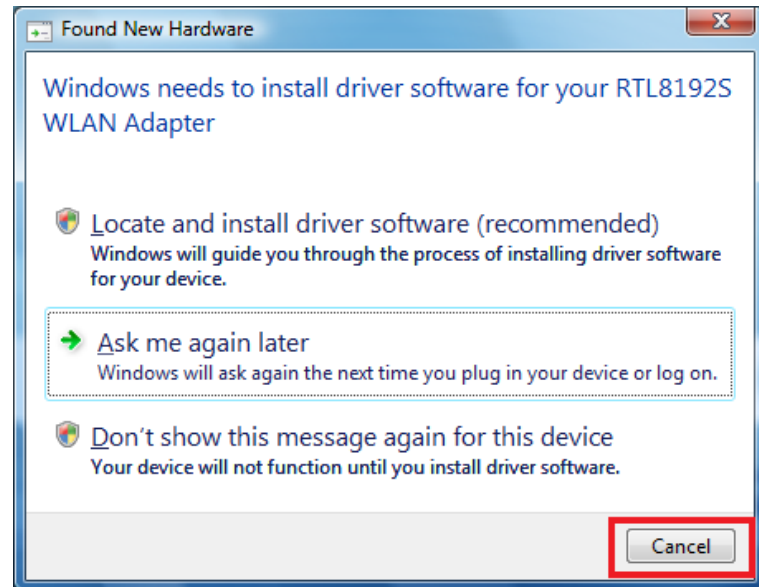
Step 1.1 Insert the USB adapter into an available USB port of your computer.

Step 1.2 Click **Cancel** when you see the **Found New Hardware Wizard**.

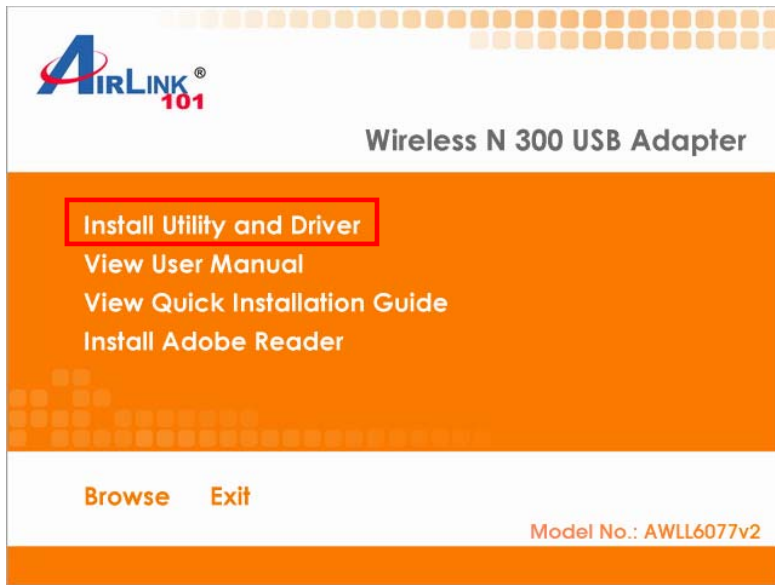
Windows XP/2000 Users:



Windows 7/Vista Users:



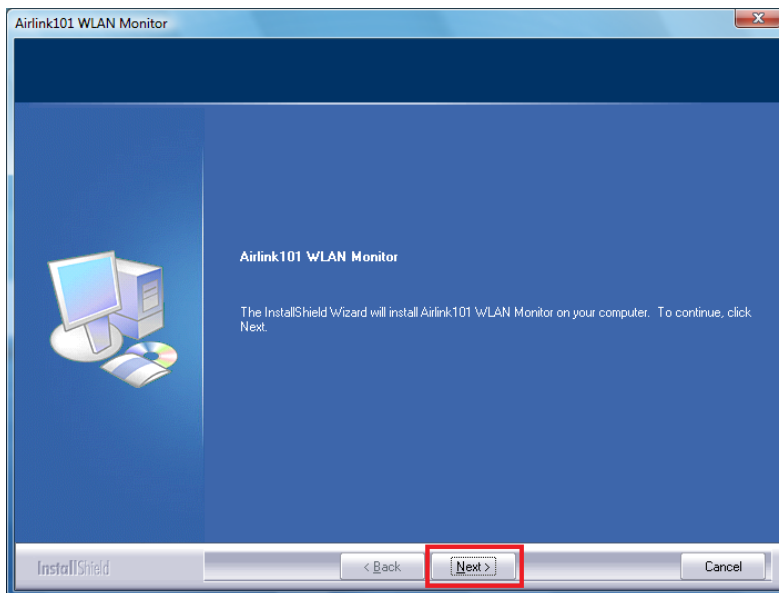
Step 1.3 Insert the Installation CD in the CD drive. The Autorun screen will pop up. Select **Install Utility and Driver** from the menu.



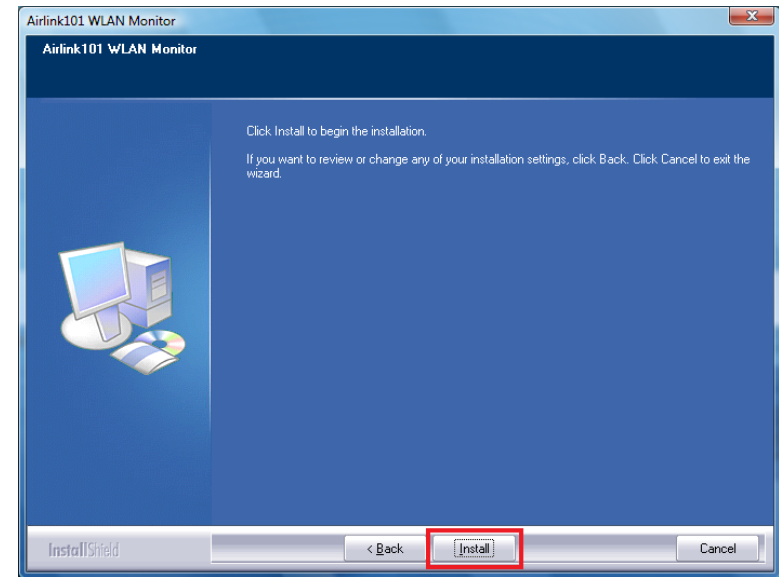
Note: If the Autorun screen doesn't appear automatically go to **Start, Run,** and type **D:\Utility\Setup.exe** (where **D** is the letter of your CD drive) and click **OK**.

Windows 7/Vista Users: When you get warning message(s), make sure that you **give permission** to continue with the installation of the driver software.

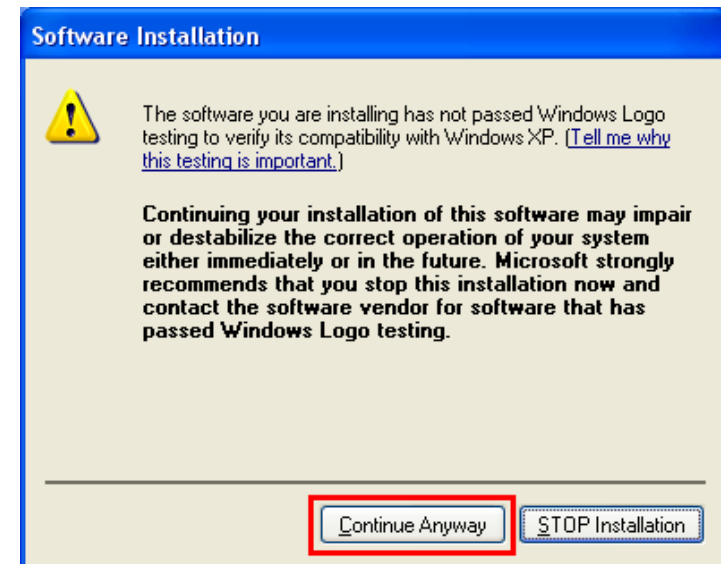
Step 1.4 The Airlink101 WLAN Monitor screen will popup. Click **Next** at the screen.

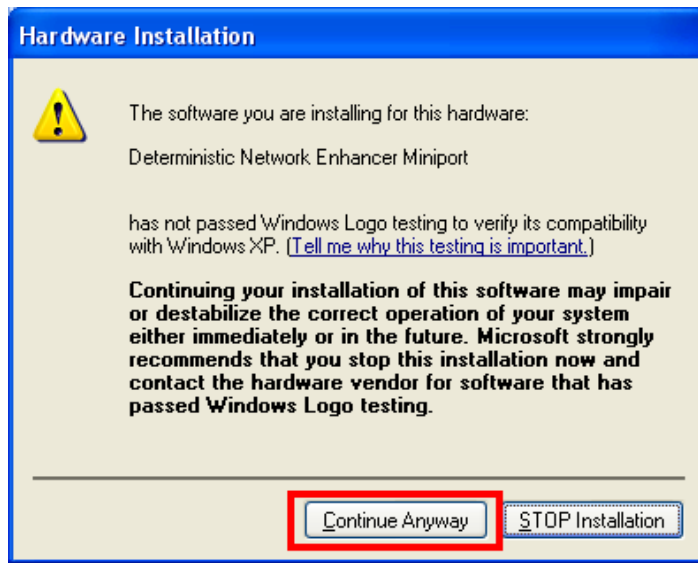


Step 1.5 Click **Install** to begin the installation.

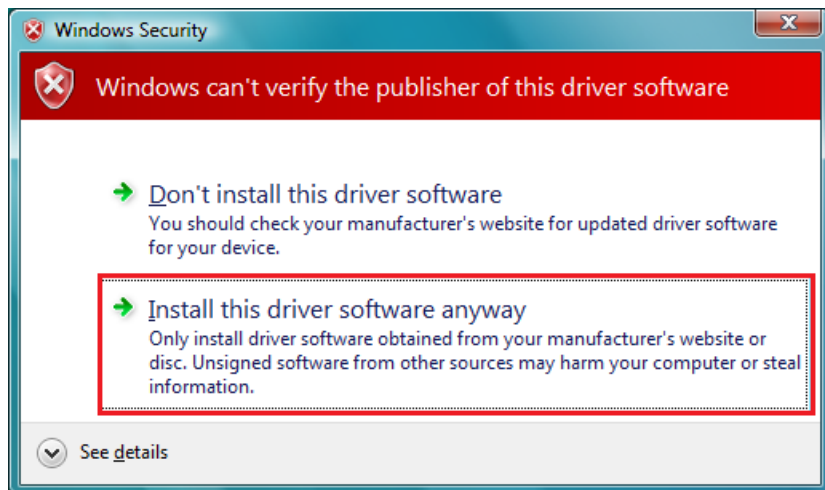


Step 1.6 Windows XP/2000 Users: Click on **Continue Anyway**.





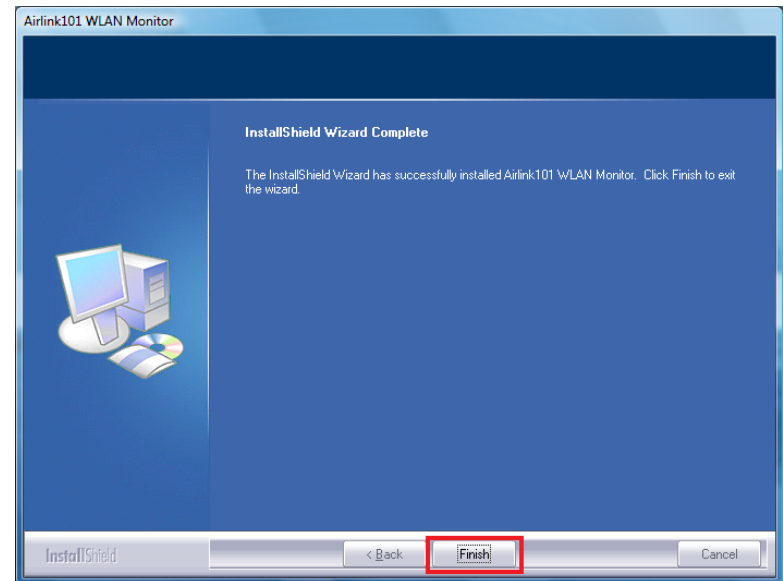
Windows 7/Vista Users: Click on **Install this driver software anyway**.



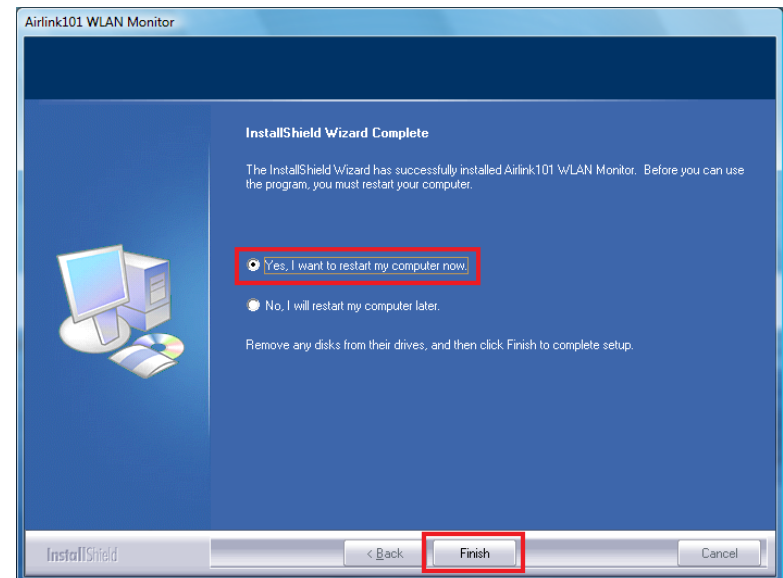
Please wait when Windows is installing the driver for Airlink101 Wireless Adapter and the utility, Airlink101 Wireless Monitor.



Step 1.7 Click **Finish** to complete the installation.



Step 1.8 Select **Yes, I will restart my computer now**. Click **Finish** to complete the installation.



The driver and utility have been installed. Please continue to Section 2.

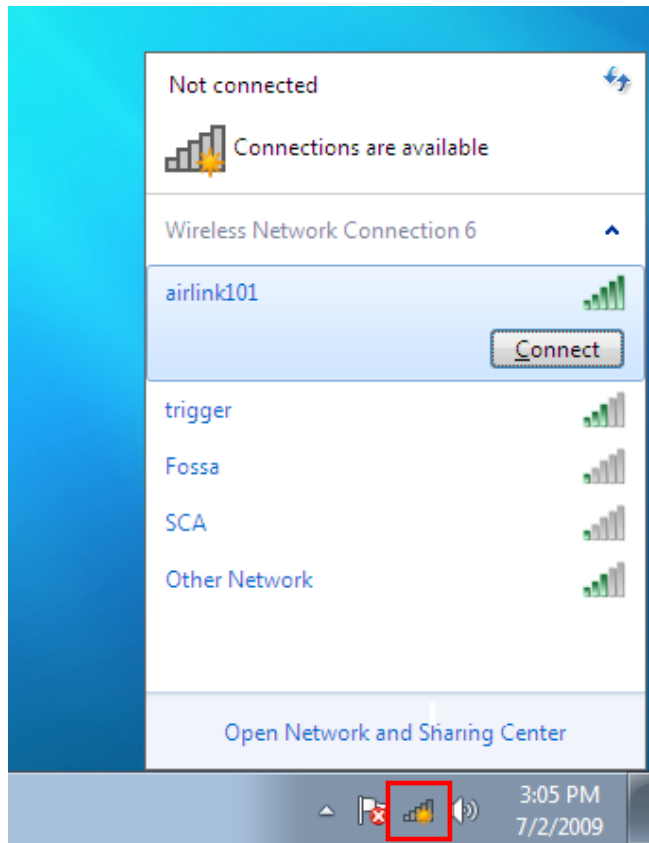
Section 2

Connect to Wireless Network

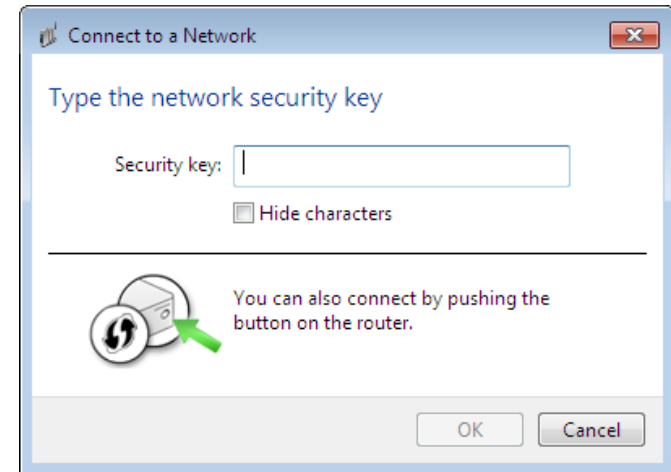
For Windows 7 Users:

You will need to use the utility built in Windows 7 to manage this wireless USB adapter. Currently, Airlink101 Wireless Monitor does not support Windows 7.

Step 2.1 Click on the wireless icon in the system tray at the bottom right-hand corner of your screen. A list of available network will pop up. Select the one you want to connect to and click **Connect**.

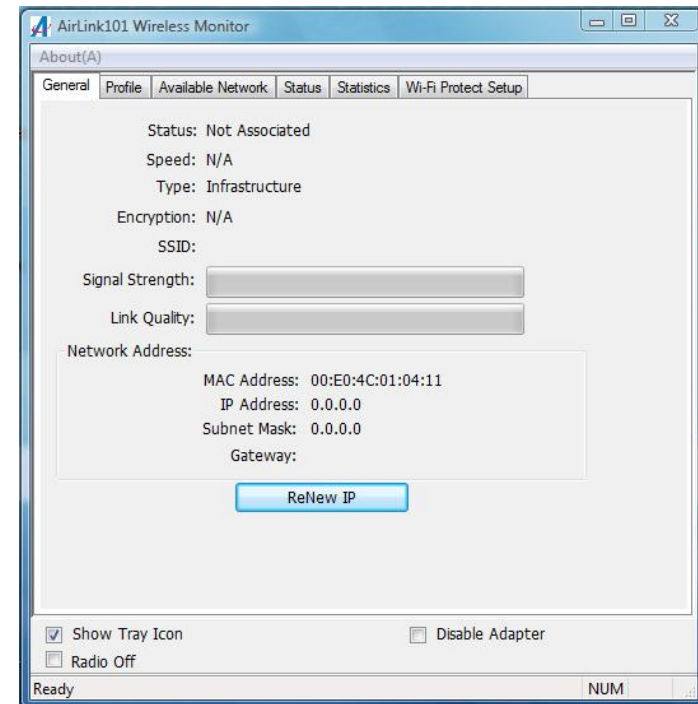


Step 2.2 Enter the network security key if the wireless network you are attempting to connect to has wireless encryption enabled. Click **OK**. The connection should be now established.



For Windows Vista/XP/2000 Users:

Step 2.1 Open the Airlink101 Wireless Monitor utility by double clicking on the icon in the system tray at the bottom right-hand corner of your screen.



Step 2.2

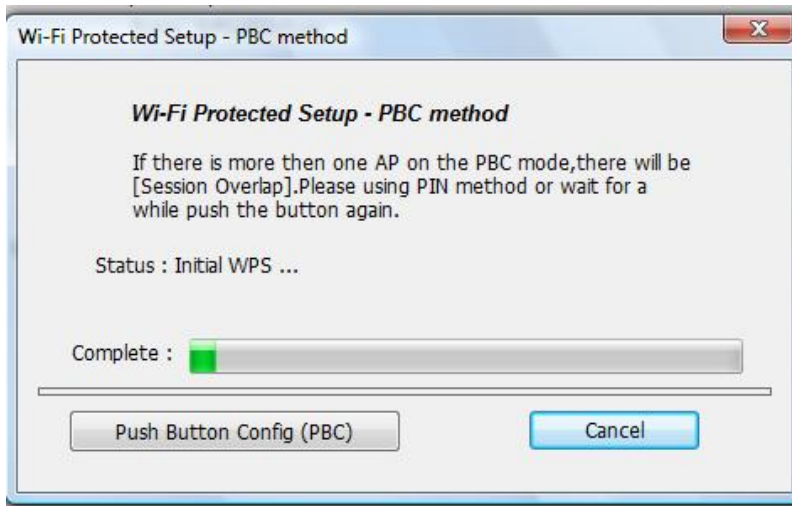
The Easy Setup Button (Wi-Fi Protected Setup) is a new and easy way to configure the encryption for your wireless network clients. In order to use it, you need to have a router that supports this feature. [If your router doesn't support Easy Setup Button function \(Wi-Fi Protected Setup\), continue to Step 2.3.](#)

1. Push the Easy Setup Button of the Adapter until you see the following window pops up on the monitor.



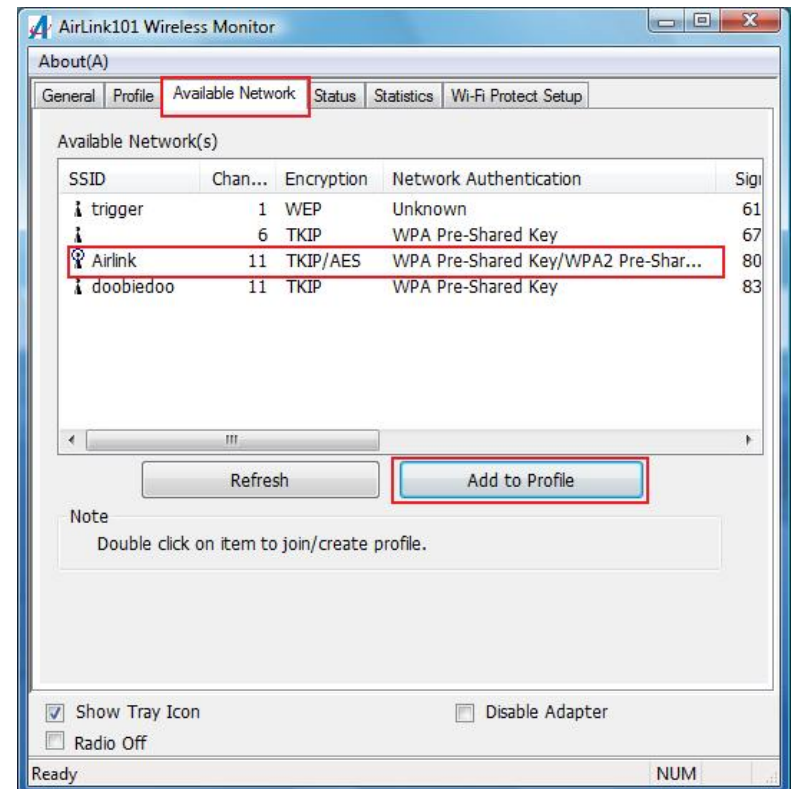
3. The router will now start the handshake with the wireless Adapter. The connection will be established in 2 minutes. Continue to Step 2.5. If the connection is not able to establish, continue to Step 2.3.

Step 2.3 Click the **Available Network** tab of the Wireless Monitor, select the **SSID** (Network Name) of the wireless network that you wish to connect to, and click **Add to Profile**.



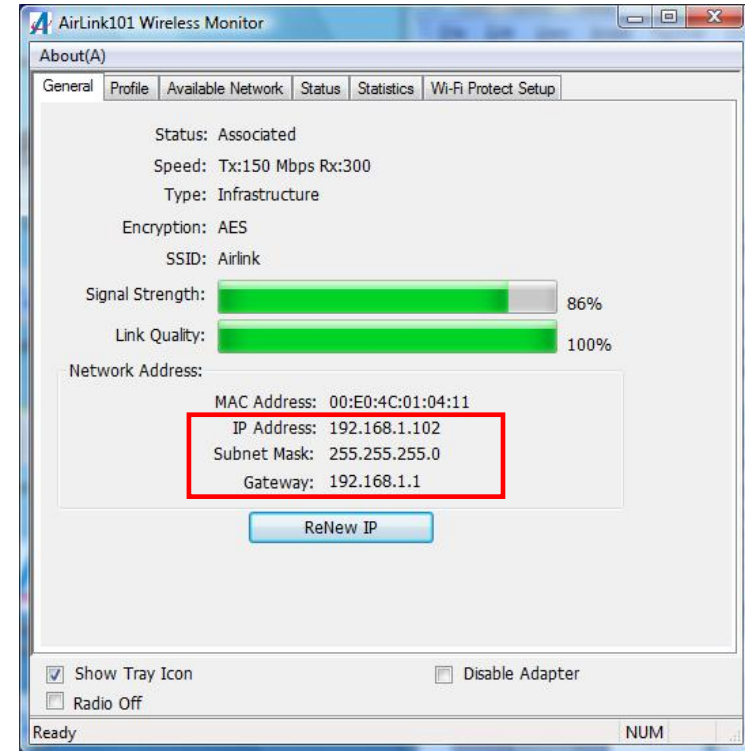
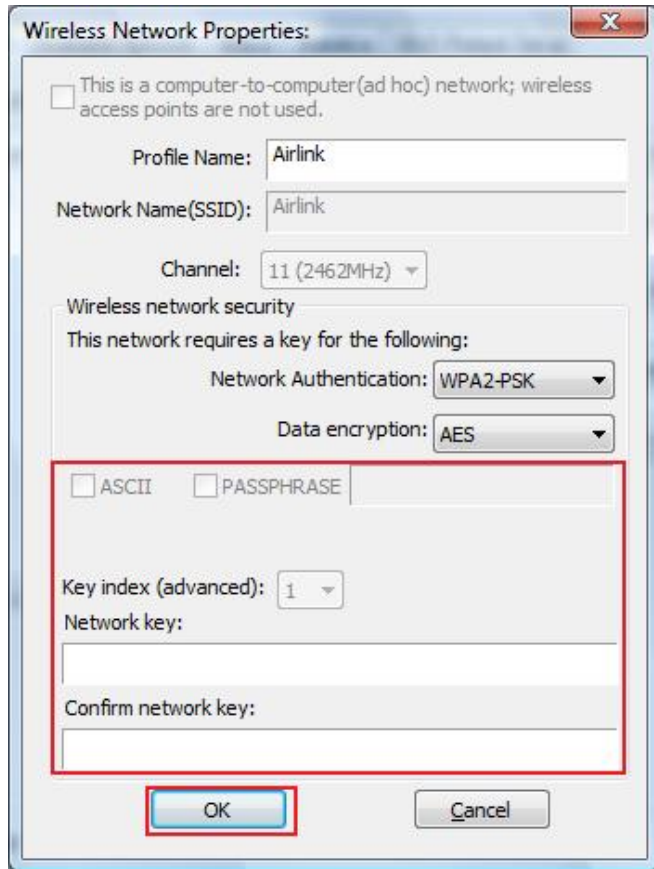
This window pops up to acknowledge you the Adapter is starting to establish a connection.

2. Push the Easy Setup Button (i.e. WPS Button) of the Router. The picture shows Airlink101 AR675W Wireless N Green Router.



If the network that you are attempting to connect does not have encryption enabled, you will receive a warning about connecting to an unsecured network. Click OK to complete the connection.

Step 2.4 Enter the wireless security key into the **Network Key** box if the network you are attempting to connect has wireless security enabled. Click **OK**.



Congratulations! You have now connected to the wireless network successfully.

The Adapter will automatically detect the type of Network Authentication and the Data encryption. All you need to do is to enter the Network Key in the appropriate boxes according to the settings of the wireless router and then click **OK** to connect.

Step 2.5 The connection should be now established. Open Airlink101 Wireless Monitor utility by double clicking the icon on the system tray and go to General tab to check the status of the connection. Verify that IP Address, Subnet Mask and Gateway have valid numbers assigned to them (instead of all 0's). The **Status** should be Associated, and there should be green bars next to **Signal Strength** and **Link Quality**.

Troubleshooting

1. If you cannot open the wireless monitor utility, make sure that the USB adapter is inserted firmly into the USB port.
2. If you cannot connect to the wireless router, you may want to double check the wireless security settings on the router. The network key you entered in Step 2.4 must match with the settings on the wireless router.
3. If you are experiencing problems with the connection such as low signal strength, slow connection speed, or unstable wireless connection, you can try to tune your router's signal by changing the channels on the router and/or by adjusting the direction of the antenna(s). You do not need to change the channel on the Adapter; it will automatically pick up the new channel after you reboot the router. Your router has 11 different channels to choose from. Keep going through the channels until you find one that gives you a stable connection. For instructions on changing channels, refer to the documentation that comes with the router.

Section 3

Technical Support

E-mail: support@airlink101.com

Toll Free: 1-888-746-3238

Website: www.airlink101.com

*Theoretical maximum wireless signal rate derived from IEEE standard 802.11 specifications. Actual data throughput will vary. Network conditions and environmental factors, including volume of network traffic, building materials and construction, mix of wireless products used, radio frequency interference (e.g., cordless telephones and microwaves) as well as network overhead lower actual data throughput rate. Compatibility with 802.11n devices from other manufactures is not guaranteed. Specifications are subject to change without notice. Photo of product may not reflect actual content. All products and trademarks are the property of their respective owners.
Copyright ©2010 Airlink101®